

|                           |                        |                             |   |
|---------------------------|------------------------|-----------------------------|---|
| LOC I-GKV<br><b>111.3</b> | APP CRS<br><b>080°</b> | Rwy Ldg<br>TDZE<br>Apt Elev | <b>9318</b><br><b>469</b><br><b>469</b> |
|---------------------------|------------------------|-----------------------------|---|

# ILS or LOC RWY 8

FORT SMITH RGNL (FSM)

DME and RADAR required.

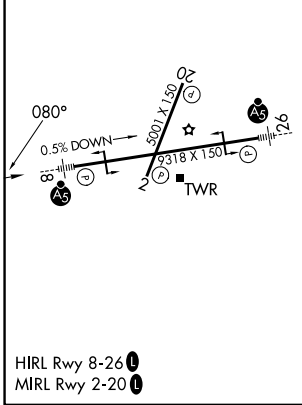
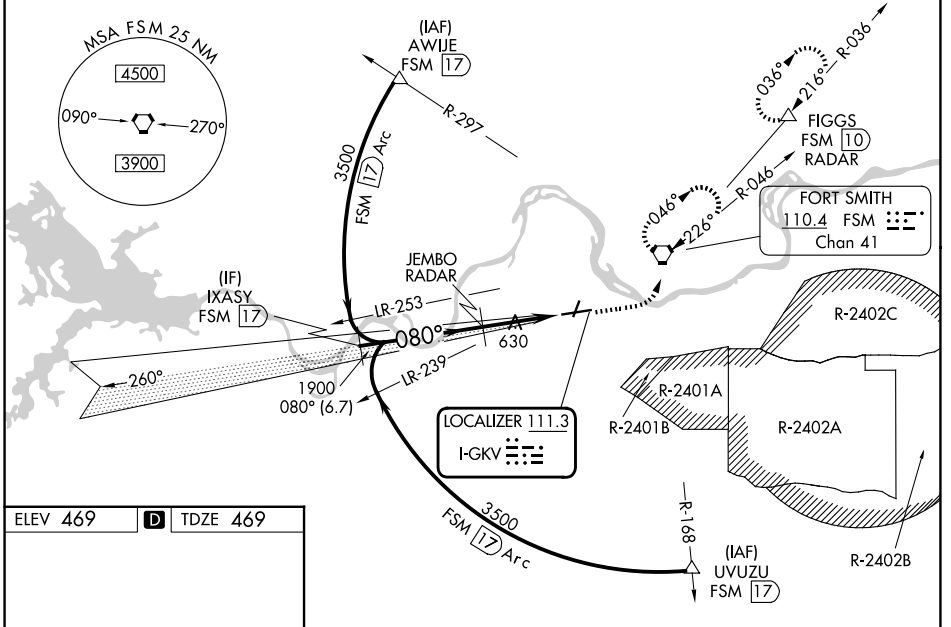
**ASR**

Circling NA for Cat E northwest of Rwy 8 and 20. Circling Rwy 20, 26 NA at night. For inop ALS, increase S-ILS 8 Cat E visibility to 3/4 SM, increase S-LOC 8, Cat C/D/E visibility to 1 1/2 SM. Circling NA for Cat E when restricted area R-2401B active. DME from FSM VORTAC. DME use requires simultaneous reception of I-GKV and FSM DME.

**MALS R**

**MISSED APPROACH:** Climb to 1000 then climbing left turn to 3300 direct FSM VORTAC and hold, continue climb-in-hold to 3300. (TACAN aircraft continue climb to 4000 on FSM R-036 to FIGGS/10 DME/RADAR and hold NE, RT, 216° inbound, continue climb-in-hold to 4000.)

|                        |  |  |                               |                         |
|------------------------|--|--|-------------------------------|-------------------------|
| ATIS<br><b>124.775</b> | RAZORBACK APP CON *<br><b>120.9 343.75</b> | FORT SMITH TOWER *<br><b>118.3(CTAF) 323.175</b> | GND CON<br><b>121.9 275.8</b> | UNICOM<br><b>122.95</b> |
|------------------------|--|--|-------------------------------|-------------------------|



|                 |                |               |               |                  |   |
|-----------------|----------------|---------------|---------------|------------------|---|
| ELEV 469        | <b>D</b>       | TDZE 469      |               |                  |   |
| IXASY<br>FSM 17 | JEMBO<br>RADAR | FSM<br>7.4    | FSM<br>6.3    |                  |   |
| 3500            | 1900           |               |               |                  |   |
| GS 3.00°        |                |               |               |                  |   |
| TCH 52          |                |               |               |                  |   |
|                 | 6.7 NM         | 3.2 NM        | 1.1 NM        |                  |   |
| CATEGORY        | A              | B             | C             | D                | E |
| S-ILS 8         | 669-1/2        |               | 200 (200-1/2) |                  |   |
| S-LOC 8         | 880-1/2        | 411 (500-1/2) | 880-3/4       | 411 (500-3/4)    |   |
| CIRCLING        | 1140-1         | 671 (700-1)   | 1400-2 3/4    | 931 (1000-2 3/4) |   |
|                 |                |               | 1400-3        | 931 (1000-3)     |   |

SC-1, 16 APR 2026 to 14 MAY 2026

SC-1, 16 APR 2026 to 14 MAY 2026