

WAAS CH <b>58217</b> <b>W02A</b>	APP CRS <b>020°</b>	Rwy Ldg TDZE Apt Elev	<b>5001</b> <b>449</b> <b>469</b>
--	------------------------	-----------------------------	---

# RNAV (GPS) RWY 2

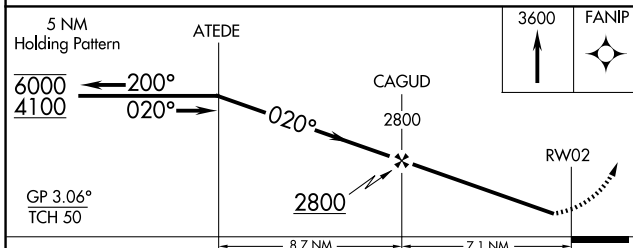
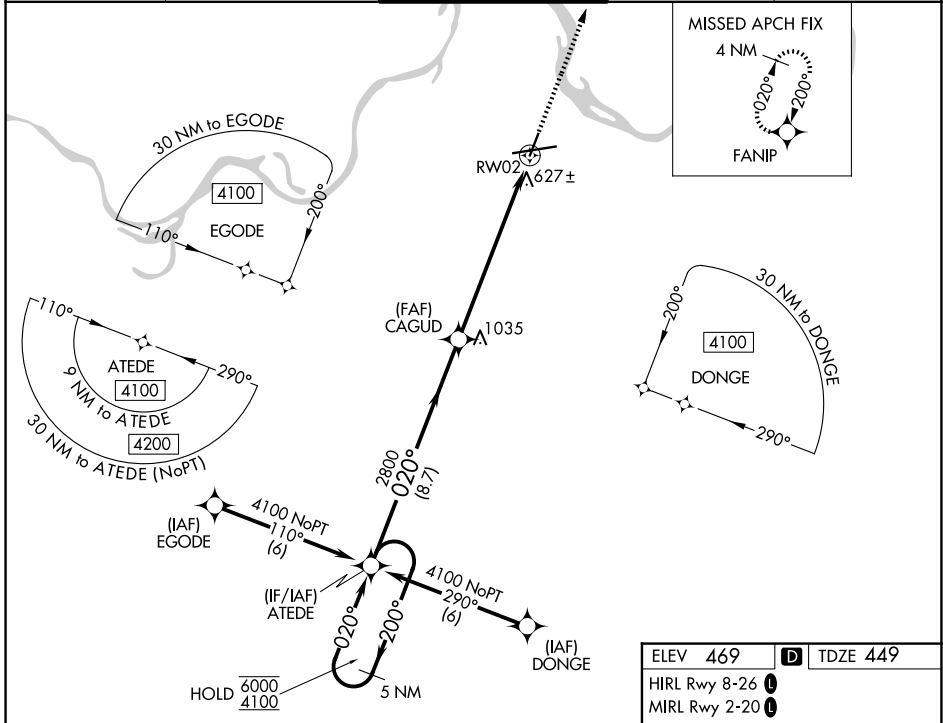
FORT SMITH RGNL (FSM)

RNP APCH - GPS.

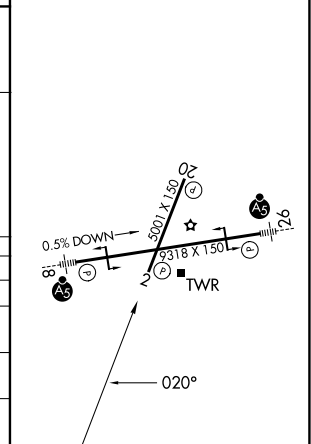
**⚠** Circling to Rwy 20 and 26 NA at night. Rwy 2 helicopter visibility reduction below 3/4 SM NA. For uncompensated Baro-VNAV systems, LNAV/VNAV NA below -15°C or above 54°C.

**MISSED APPROACH:** Climb to 3600 direct FANIP and hold, continue climb-in-hold to 3600.

ATIS <b>124.775</b>	RAZORBACK APP CON * <b>120.9 343.75</b>	FORT SMITH TOWER * <b>118.3(CTAF) 323.175</b>	GND CON <b>121.9 275.8</b>	UNICOM <b>122.95</b>
------------------------	--	--	-------------------------------	-------------------------



ELEV 469	<b>D</b> TDZE 449
HIRL Rwy 8-26 <b>1</b>	
MIRL Rwy 2-20 <b>1</b>	



CATEGORY	A	B	C	D
LPV DA		705-1	256 (300-1)	
LNAV/VNAV DA		942-1 3/4	493 (500-1 3/4)	
LNAV MDA	1160-1 711 (700-1)		1160-2 711 (700-2)	1160-2 1/4 711 (700-2 1/4)
CIRCLING	1160-1 691 (700-1)		1400-2 3/4 931 (1000-2 3/4)	1400-3 931 (1000-3)