

WAAS CH <b>77917</b> <b>W08A</b>	APP CRS <b>080°</b>	Rwy Ldg TDZE Apt Elev	<b>9318</b> <b>469</b> <b>469</b>
--	------------------------	-----------------------------	---

# RNAV (GPS) RWY 8

FORT SMITH RGNL (F'SM)

RNP APCH - GPS.

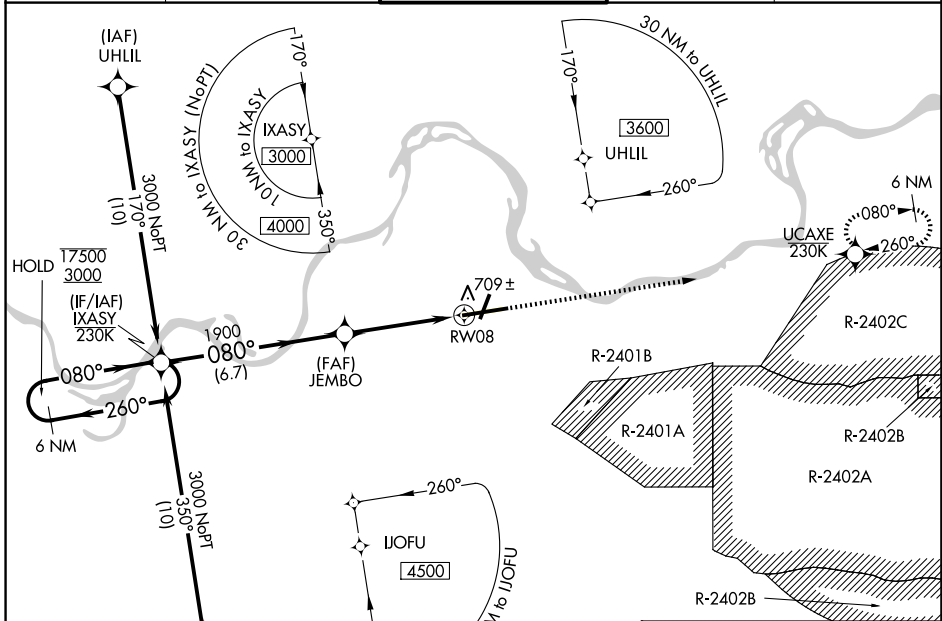
- Circling NA for Cat E northwest of Rwy 8 and 20. Circling Rwy 20, 26 NA at night. For uncompensated Baro-VNAV systems, LNAV/VNAV NA below -1°C or above 54°C. For inop ALS, increase LPV Cat E visibility to 3/4 SM, LNAV/VNAV all Cats visibility to 1 3/8 SM and LNAV Cat C/D/E visibility to 1 3/8 SM. Circling NA for Cat E when restricted area R-2401B active.
- ASR

MALSR



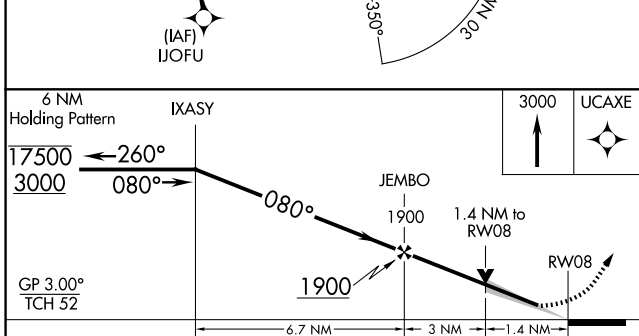
MISSED APPROACH:  
Climb to 3000 direct UCAXE and hold.

ATIS <b>124.775</b>	RAZORBACK APP CON * <b>120.9 343.75</b>	FORT SMITH TOWER * <b>118.3</b> (CTAF) <b>323.175</b>	GND CON <b>121.9 275.8</b>	UNICOM <b>122.95</b>
------------------------	--	--	-------------------------------	-------------------------



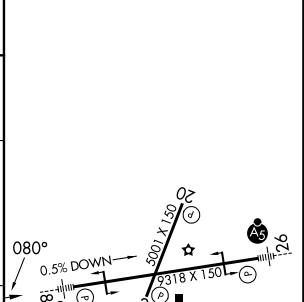
SC-1, 16 APR 2026 to 14 MAY 2026

SC-1, 16 APR 2026 to 14 MAY 2026



ELEV 469	TDZE 469
----------	----------

CATEGORY	A	B	C	D	E
LPV DA		669-1/2	200 (200-1/2)		
LNAV/VNAV DA		945-1	476 (500-1)		
LNAV MDA	960-1/2 491 (500-1/2)		960-1 491 (500-1)		
CIRCLING	1140-1 671 (700-1)		1400-2 3/4 931 (1000-2 3/4)	1400-3 931 (1000-3)	



HIRL Rwy 8-26	MIRL Rwy 2-20
---------------	---------------