

VORTAC FSM <b>110.4</b> Chan <b>41</b>	APP CRS <b>225°</b>	Rwy Ldg <b>9318</b> TDZE <b>448</b> Apt Elev <b>469</b>
--	------------------------	---

# VOR Z or TACAN Z RWY 26

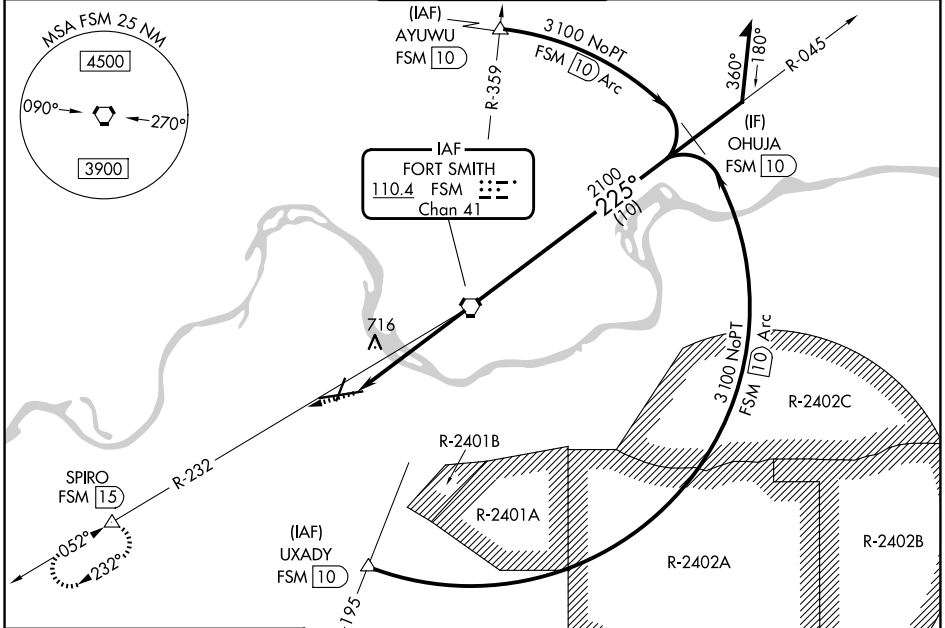
FORT SMITH RGNL (FSM)

DME required.

**▼** Rwy 26 helicopter visibility reduction below RVR 5000 NA. Inop table does not apply.  
**▲** Circling Cat E NA when R-2401B active. Arc segment R-195 CCW: NA when restricted areas R-2401 and R-2402 in effect. Circling NA for Cat E northwest of Rwy 8 and Rwy 20. Straight-in Rwy 26 NA at night. Circling Rwy 20, 26 NA at night.

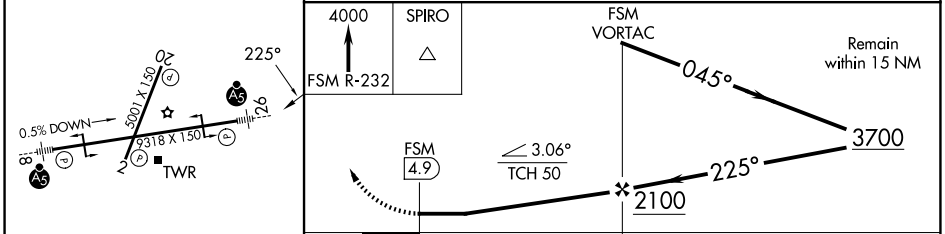
**MALSR** MISSED APPROACH: Climb to 4000 on FSM VORTAC R-232 to SPIRO/15 DME and hold, continue climb-in-hold to 4000.

ATIS <b>124.775</b>	RAZORBACK APP CON * <b>120.9 343.75</b>	FORT SMITH TOWER * <b>118.3 (CTAF) 323.175</b>	GND CON <b>121.9 275.8</b>	UNICOM <b>122.95</b>
------------------------	--	---	-------------------------------	-------------------------



ELEV 469	<b>D</b>	TDZE 448
----------	----------	----------

Procedure NA for arrival on FSM VORTAC airway radials 036 CW 090.



CATEGORY	A	B	C	D	E
S-26	980/55	532 (600-1)	980-1½ 532 (600-1½)		
CIRCLING	1140-1 671 (700-1)		1400-2¾ 931 (1000-2¾)	1400-3 931 (1000-3)	

SC-1, 16 APR 2026 to 14 MAY 2026

SC-1, 16 APR 2026 to 14 MAY 2026