

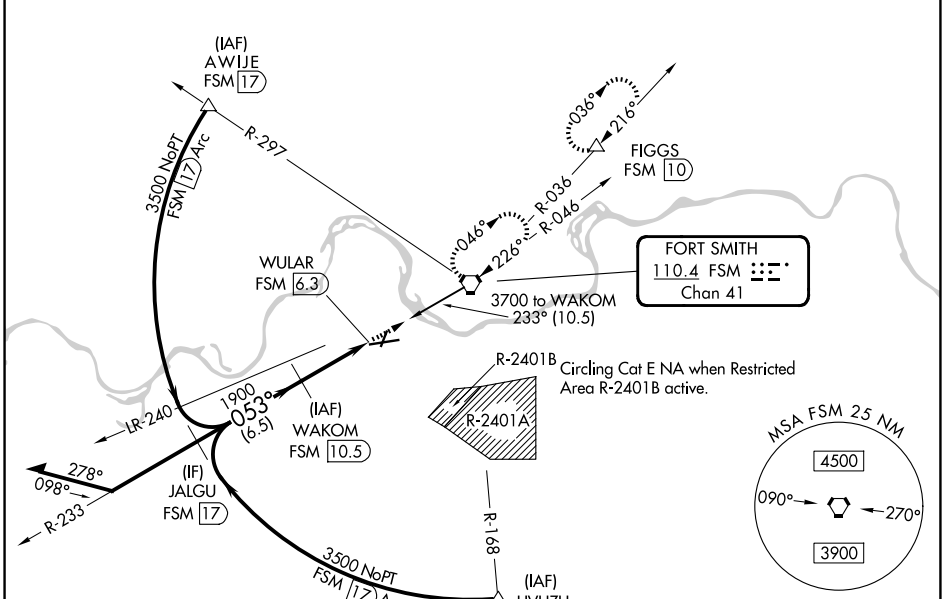
VORTAC FSM <b>110.4</b> Chan <b>41</b>	APP CRS <b>053°</b>	Rwy Ldg TDZE <b>469</b> Apt Elev <b>469</b>
--	------------------------	---

# VOR Z or TACAN Z RWY 8

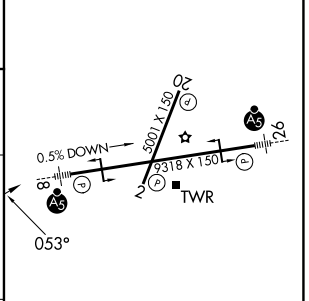
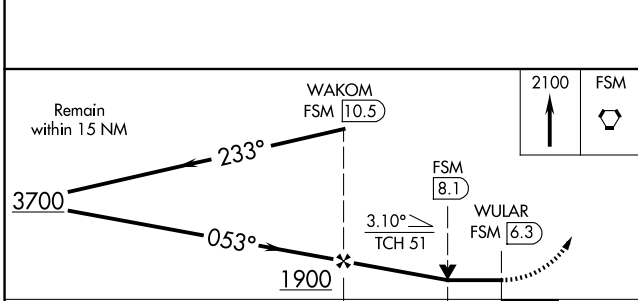
FORT SMITH RGNL (FSM)

DME required.	MALSR	MISSED APPROACH: Climb to 2100 direct FSM VORTAC and hold, continue climb-in-hold to 3300. (TACAN aircraft climbing left turn to 4000 direct FSM VORTAC then on FSM VORTAC R-036 to FIGGS/10 DME and hold NE, RT, 216° inbound).
<p>⚠ Circling NA for Cat E northwest of Rwy 8 and of Rwy 20. Circling Rwy 20, 26 NA at night.</p> <p>⚠ Rwy 8 helicopter visibility reduction below ¾ SM NA. Inop table does not apply.</p>		

ATIS <b>124.775</b>	RAZORBACK APP CON * <b>120.9 343.75</b>	FORT SMITH TOWER * <b>118.3 (CTAF) 323.175</b>	GND CON <b>121.9 275.8</b>	UNICOM <b>122.95</b>
------------------------	--	---	-------------------------------	-------------------------



ELEV 469	<b>D</b> TDZE 469
----------	-------------------



CATEGORY	A	B	C	D	E
S-8	1080-1	611 (700-1)	1080-1¾	611 (700-1¾)	
CIRCLING	1140-1	671 (700-1)	1400-2¾ 931 (1000-2¾)	1400-3	931 (1000-3)

HIRL Rwy 8-26	MIRL Rwy 2-20
---------------	---------------

SC-1, 16 APR 2026 to 14 MAY 2026

SC-1, 16 APR 2026 to 14 MAY 2026