

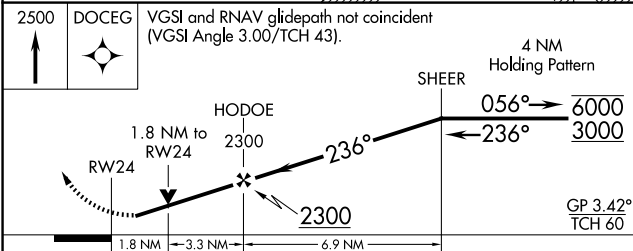
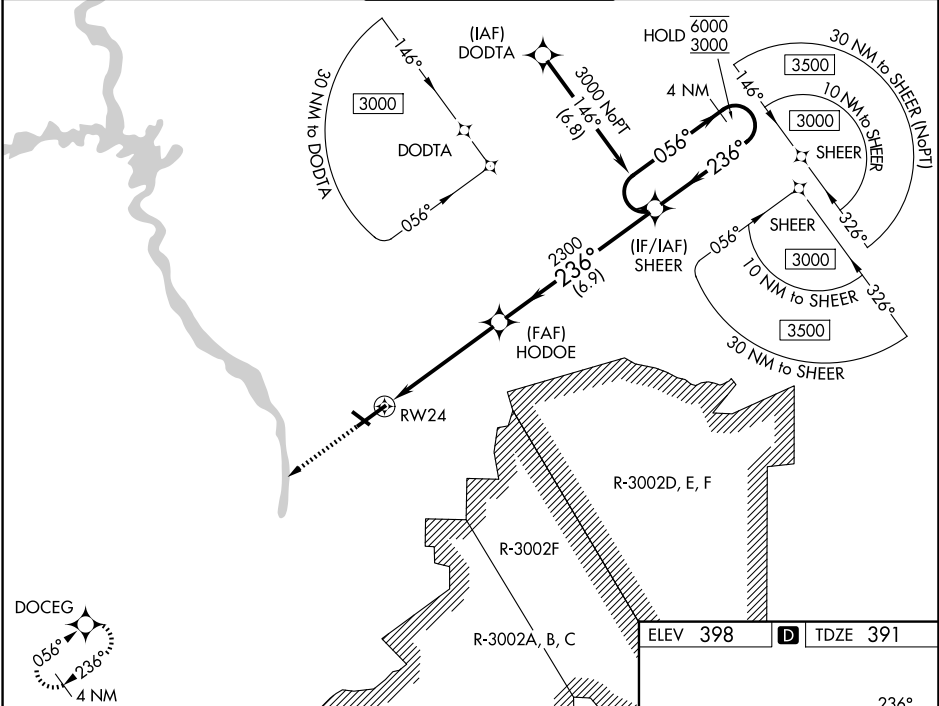
WAAS CH <b>45501</b> <b>W24A</b>	APP CRS <b>236°</b>	Rwy Ldg TDZE Apt Elev	<b>6997</b> <b>391</b> <b>398</b>
--	------------------------	-----------------------------	---

# RNAV (GPS) RWY 24

COLUMBUS (CSG)

RNP APCH - GPS.		<p><b>⚠</b> Circling Rwy 13 and 31 NA at night. Rwy 24 helicopter visibility reduction below 3/4 SM NA. For uncompensated Baro-VNAV systems, LNAV/VNAV NA below -4°C or above 53°C.</p>		<p>MISSED APPROACH: Climb to 2500 direct DOCEG and hold.</p>	
-----------------	--	---	--	--	--

ATIS <b>127.75</b>	ATLANTA APP CON * <b>125.5 323.1</b>	COLUMBUS TOWER * <b>120.1 (CTAF) 0 257.8</b>	GND CON <b>121.9 348.6</b>	UNICOM <b>122.95</b>
-----------------------	---	---	-------------------------------	-------------------------



CATEGORY	A	B	C	D
LPV DA		729-1	338 (400-1)	
LNAV/VNAV DA		872-1 3/8	481 (500-1 1/8)	
LNAV MDA	1020-1	629 (700-1)	1020-1 3/4	629 (700-1 1/4)
CIRCLING	1020-1	622 (700-1)	1140-2 1/4	1300-3
			742 (800-2 1/4)	902 (1000-3)

ELEV 398 **D** TDZE 391

REIL Rwy 24 **④**  
 HIRL Rwy 6-24 **④**  
 MIRL Rwy 13-31 **④**  
 REIL Rws 13 and 31

SE-4, 16 APR 2026 to 14 MAY 2026

SE-4, 16 APR 2026 to 14 MAY 2026