

WAAS CH <b>40001</b> <b>W06A</b>	APP CRS <b>056°</b>	Rwy Ldg <b>6997</b> TDZE <b>380</b> Apt Elev <b>398</b>
--	------------------------	---

# RNAV (GPS) RWY 6

COLUMBUS (CSG)

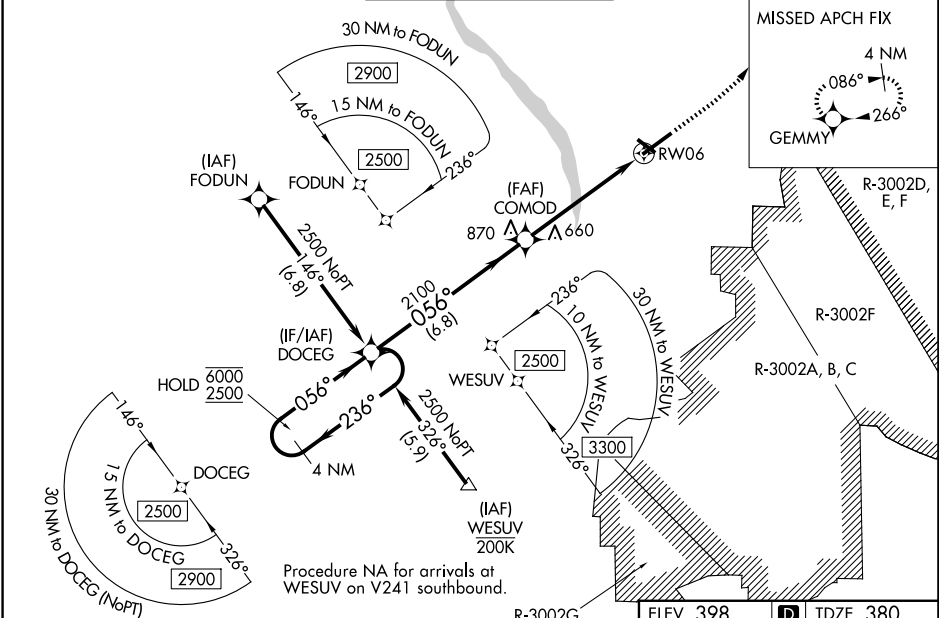
RNP APCH - GPS.

**⚠** Circling to Rwy 13, 31 and 24 NA at night. Rwy 6 helicopter visibility reduction below  $\frac{3}{4}$  SM NA. For uncompensated Baro-VNAV systems, LNAV/VNAV NA below -4°C or above 54°C. For inop ALS, increase LPV all Cats visibility to RVR 4500. For inop ALS, increase LNAV Cats A and B visibility to RVR 5500 and Cats C and D visibility to  $1\frac{1}{2}$  SM.

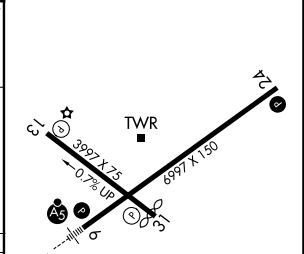
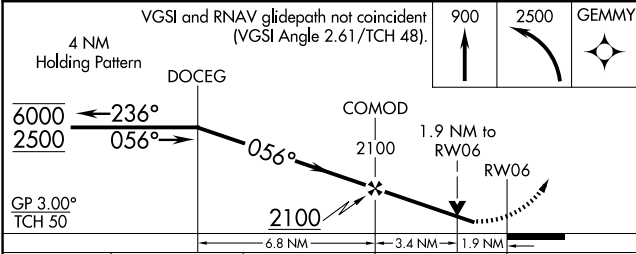


**MISSED APPROACH:** Climb to 900, then climbing left turn to 2500 direct GEMMY and hold.

ATIS <b>127.75</b>	ATLANTA APP CON * <b>125.5 323.1</b>	COLUMBUS TOWER * <b>120.1 (CTAF) 257.8</b>	GND CON <b>121.9 348.6</b>	UNICOM <b>122.95</b>
-----------------------	---	---	-------------------------------	-------------------------



ELEV 398	<b>D</b> TDZE 380
----------	-------------------



CATEGORY	A	B	C	D
LPV DA		659/40	279 (300- $\frac{3}{4}$ )	
LNAV/VNAV DA		832/45	452 (500- $\frac{7}{8}$ )	
LNAV MDA	960/40	580 (600- $\frac{3}{4}$ )	960-1 $\frac{1}{4}$	580 (600-1 $\frac{1}{4}$ )
CIRCLING	960-1	562 (600-1)	1140-2 $\frac{1}{4}$ 742 (800-2 $\frac{1}{4}$ )	1300-3 902 (1000-3)

REIL Rwy 24 **Ⓛ**  
HIRL Rwy 6-24 **Ⓛ**  
MRL Rwy 13-31 **Ⓛ**  
REIL Rws 13 and 31

SE-4, 16 APR 2026 to 14 MAY 2026

SE-4, 16 APR 2026 to 14 MAY 2026