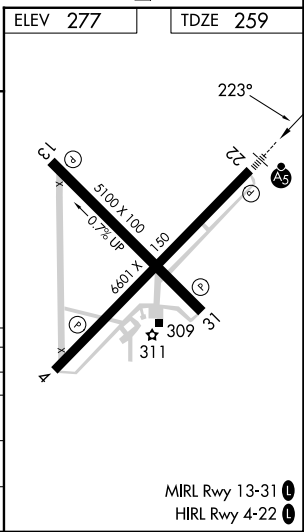
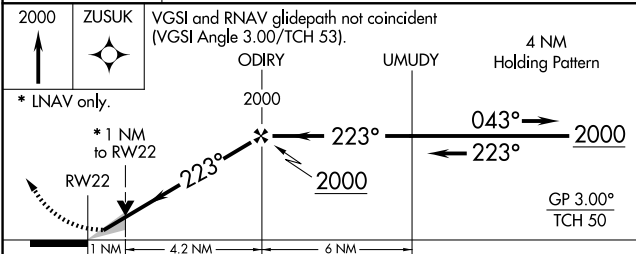
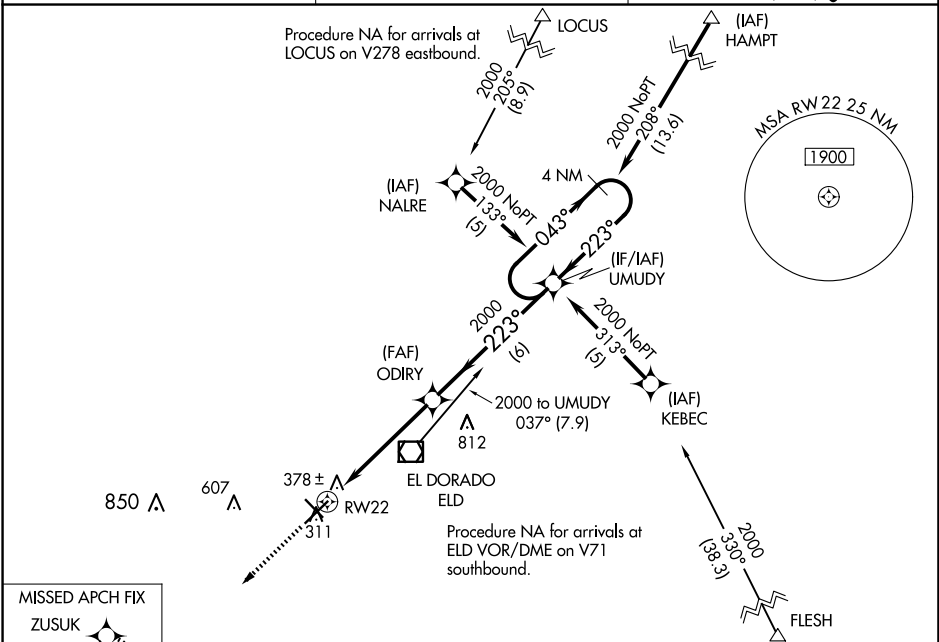


WAAS CH <b>77521</b> <b>W22A</b>	APP CRS <b>223°</b>	Rwy Idg <b>6601</b> TDZE <b>259</b> Apt Elev <b>277</b>
--	------------------------	---

# RNAV (GPS) RWY 22

SOUTH ARKANSAS RGNL AT GOODWIN FLD (ELD)

<p><b>RNP APCH.</b></p> <p><b>▼</b> For uncompensated Baro-VNAV systems, LNAV/VNAV NA below -15°C or above 54°C. For inop ALS, increase LPV all Cats visibility to 1 1/8 SM, increase LNAV/VNAV all Cats visibility to 1 1/4 SM. Circling Rwy 4, 13, 31, NA at night.</p>	<p>MALSR</p>	<p><b>MISSED APPROACH:</b> Climb to 2000 direct ZUSUK and hold.</p>
<p>ASOS <b>118.325</b></p>	<p>FORT WORTH CENTER <b>128.2 269.1</b></p>	<p>UNICOM <b>123.0 (CTAF) 0</b></p>



CATEGORY	A	B	C	D
LPV DA	602-5/8 343 (400-5/8)			
LNAV/VNAV DA	650-7/8 391 (400-7/8)			
LNAV MDA	640-1/2 381 (400-1/2)	640-5/8 381 (400-5/8)		
CIRCLING	740-1 463 (500-1)	920-1 1/4 643 (700-1 1/4)	920-2 643 (700-2)	

SC-1, 16 APR 2026 to 14 MAY 2026

SC-1, 16 APR 2026 to 14 MAY 2026