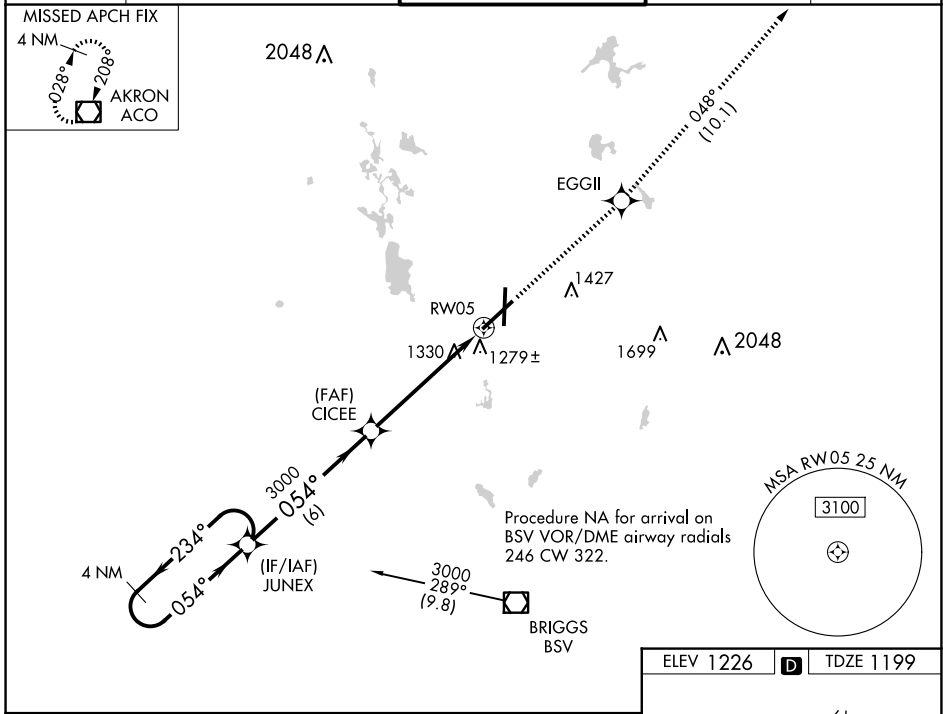


WAAS CH <b>77620</b> <b>W05A</b>	APP CRS <b>054°</b>	Rwy Idg TDZE Apt Elev	<b>8204</b> <b>1199</b> <b>1226</b>
--	------------------------	-----------------------------	---

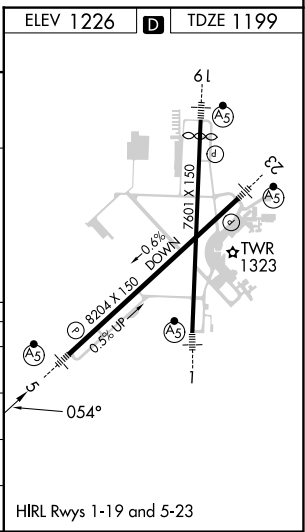
# RNAV (GPS) RWY 5

## AKRON-CANTON RGNL (CAK)

<p><b>▼</b> For uncompensated Baro-VNAV systems, LNAV/VNAV NA below -17°C (2°F) or above 46°C (114°F). DME/DME RNP-0.3 NA. ** RVR 1800 authorized with use of FD or AP or HUD to DA.</p>		<p><b>MALSR</b></p>	<p><b>MISSED APPROACH:</b> Climb to 3000 direct EGGII and on track 048° to ACO VOR/DME and hold.</p>	
<p>ATIS <b>121.05</b></p>	<p>CLEVELAND APP CON * <b>125.5 269.25</b></p>	<p>AKRON-CANTON TOWER <b>134.75 279.575</b></p>	<p>GND CON <b>121.7 348.6</b></p>	<p>CLNC DEL <b>132.05</b></p>



4 NM Holding Pattern	JUNEX		CICEE		3000	EGGII	tr 048°	ACO
	← 234°	→ 054°	→ 054°	→ 054°	3000			
GP 3.00° TCH 50	6 NM		4.2 NM		1.3 NM		* LNAV only	
CATEGORY	A	B	C	D				
LPV DA**	1399/24		200 (200-½)					
LNAV/VNAV DA	1577/50		378 (400-1)					
LNAV MDA	1640/24	441 (500-½)	1640/40 441 (500-¾)	1640/50 441 (500-1)				
CIRCLING	1760-1	534 (600-1)	1780-1½ 554 (600-1½)	1800-2 574 (600-2)				



EC-2, 16 APR 2026 to 14 MAY 2026

EC-2, 16 APR 2026 to 14 MAY 2026