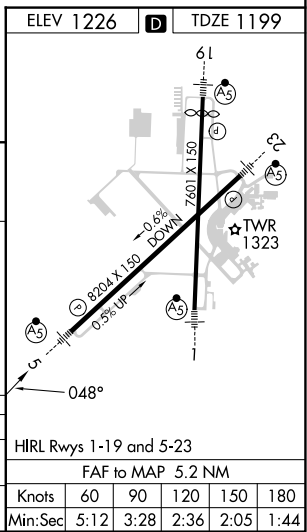
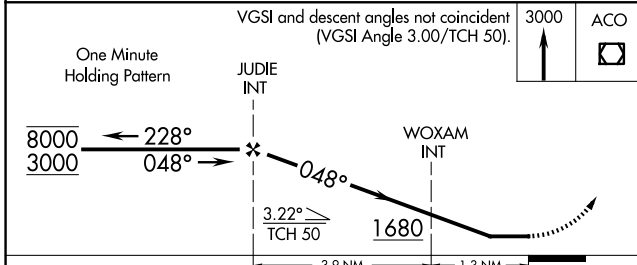
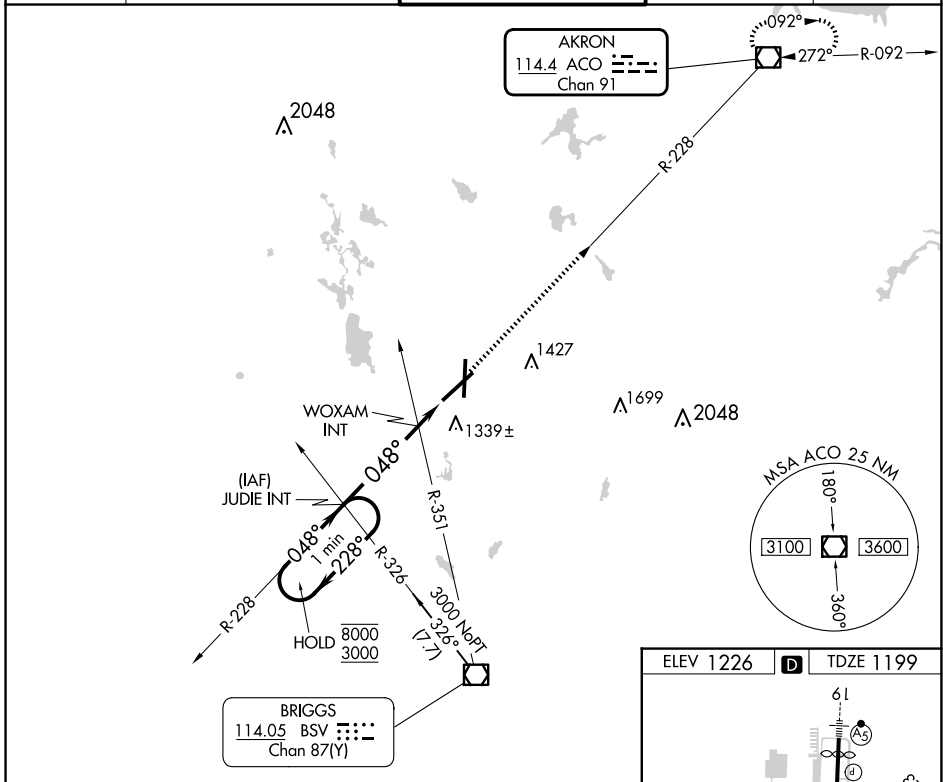


VOR/DME ACO <b>114.4</b> Chan <b>91</b>	APP CRS <b>048°</b>	Rwy Idg TDZE <b>1199</b> Apt Elev <b>1226</b>
---	------------------------	---

# VOR RWY 5

AKRON-CANTON RGNL (CAK)

Dual VOR receivers required.		MALSR	MISSED APPROACH: Climb to 3000 direct ACO VOR/DME and hold.	
ATIS <b>121.05</b>	CLEVELAND APP CON * <b>125.5 269.25</b>	AKRON-CANTON TOWER <b>134.75 279.575</b>	GND CON <b>121.7 348.6</b>	CLNC DEL <b>132.05</b>



CATEGORY	A	B	C	D
S-5	1600/24	401 (400-½)	1600/40 401 (400-¾)	1600/50 401 (400-1)
CIRCLING	1760-1	534 (600-1)	1780-1½ 554 (600-1½)	1800-2 574 (600-2)

HIRL Rwy 1-19 and 5-23					
FAF to MAP 5.2 NM					
Knots	60	90	120	150	180
Min:Sec	5:12	3:28	2:36	2:05	1:44