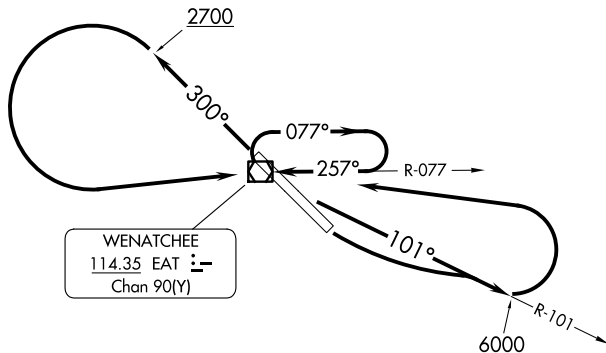


WENATCHEE TWO DEPARTURE (OBSTACLE)

SEATTLE CENTER
126.1
ASOS
119.925
UNICOM
123.0



TAKEOFF MINIMUMS

Rwy 12: Standard with minimum climb of 575' per NM to 3300 or 3500-3 for VCOA.
Rwy 30: Standard with minimum climb of 500' per NM to 3500 or 3500-3 for VCOA.

(NOTES CONTINUED ON FOLLOWING PAGE)

NOTE: Chart not to scale.

DEPARTURE ROUTE DESCRIPTION

TAKEOFF RUNWAY 12: Climbing left turn to 6000 to intercept EAT VOR/DME R-101 eastbound, thence

TAKEOFF RUNWAY 30: Climb heading 300° to 2700, then climbing left turn to 6000 direct EAT VOR/DME, then on EAT VOR/DME R-101 eastbound, thence

. . . . leaving 6000, turn left direct EAT VOR/DME. Climb-in-holding pattern to cross EAT VOR/DME at or above the MCA/MEA for direction of flight.

VCOA ALL RUNWAYS: Obtain ATC approval for VCOA when requesting IFR clearance. Climb in visual conditions to cross EAT VOR/DME at or above 4600. Climb-in-holding pattern to cross EAT VOR/DME at or above the MCA/MEA for direction of flight.

NW-1, 16 APR 2026 to 14 MAY 2026

NW-1, 16 APR 2026 to 14 MAY 2026