

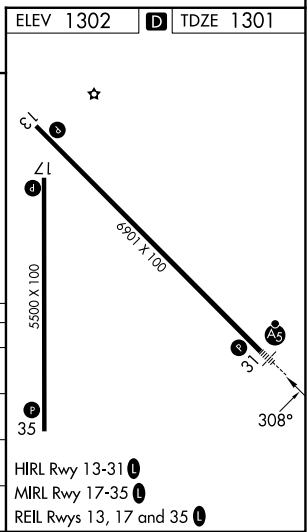
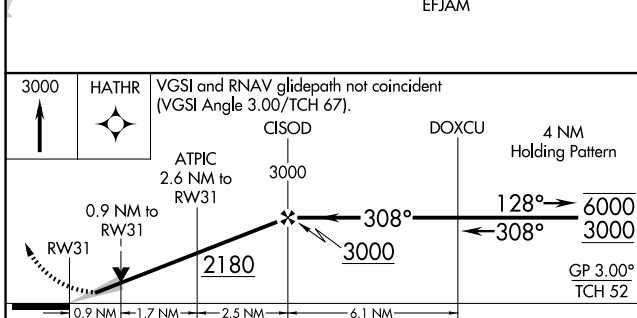
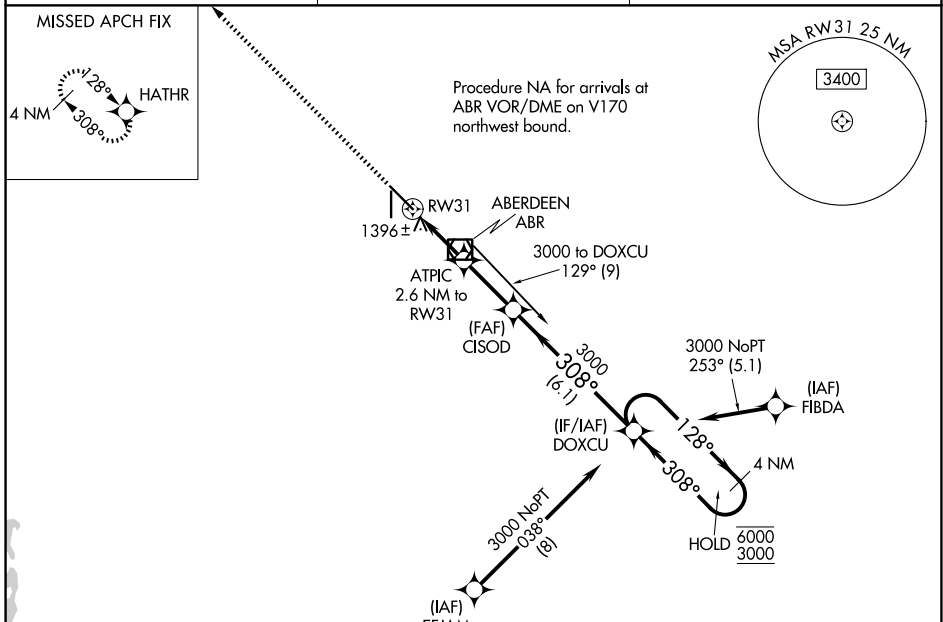
WAAS CH <b>42914</b> <b>W31A</b>	APP CRS <b>308°</b>	Rwy Ldg TDZE Apt Elev	<b>6901</b> <b>1301</b> <b>1302</b>
--	------------------------	-----------------------------	---

# RNAV (GPS) RWY 31

ABERDEEN RGNL (ABR)

RNP APCH - GPS.	MALSR	MISSED APPROACH: Climb to 3000 direct HATHR and hold.
⚠ For uncompensated Baro-VNAV systems, LNAV/VNAV NA below -17°C or above 54°C. For inop ALS, increase LNAV/VNAV visibility all Cats to 7/8 SM and LNAV visibility all Cats to 1 SM.		

ASOS <b>125.875</b>	MINNEAPOLIS CENTER <b>120.6 371.9</b>	UNICOM <b>122.7 (CTAF)</b>
------------------------	--	-------------------------------



CATEGORY	A	B	C	D
LPV DA		1501-1/2	200 (200-1/2)	
LNAV/VNAV DA		1599-1/2	298 (300-1/2)	
LNAV MDA	1660-1/2	359 (400-1/2)	1660-5/8	359 (400-5/8)
CIRCLING	1760-1 458 (500-1)	1860-1 558 (600-1)	1960-1 3/4 658 (700-1 3/4)	2160-2 3/4 858 (900-2 3/4)

NC-1, 16 APR 2026 to 14 MAY 2026

NC-1, 16 APR 2026 to 14 MAY 2026