

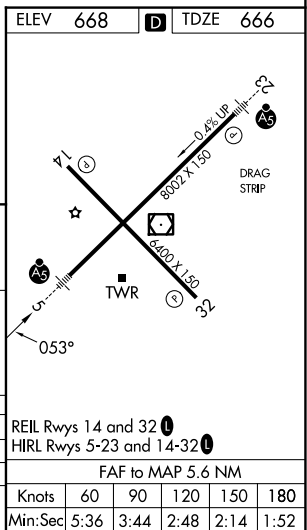
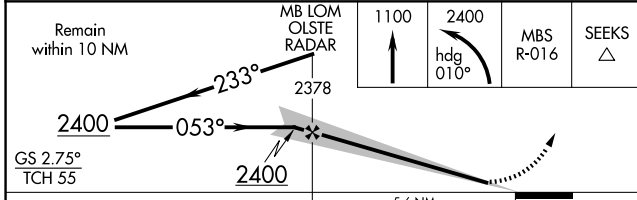
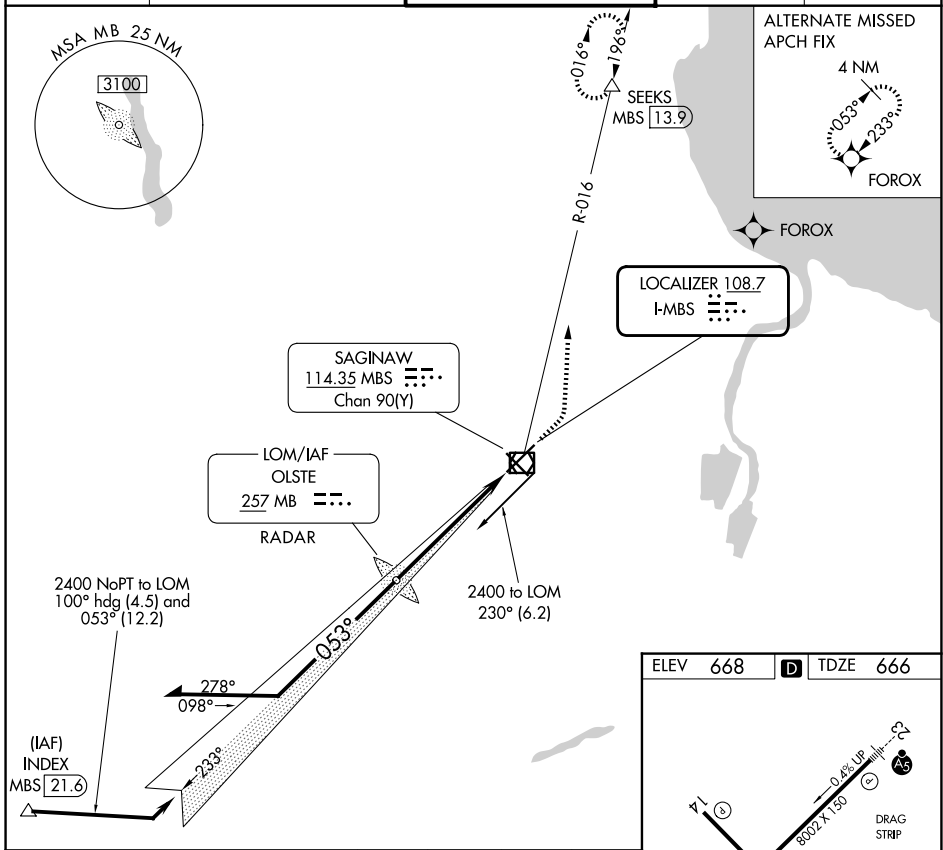
LOC I-MBS 108.7	APP CRS 053°	Rwy Ldg TDZE Apt Elev	8002 666 668
---------------------------	------------------------	-----------------------------	---

ILS or LOC RWY 5

MBS INTL (MBS)

DME required.	MALSR	MISSED APPROACH: Climb to 1100 then climbing left turn to 2400 on heading 010° and MBS VOR/DME R-016 to SEEKS/MBS 13.9 DME and hold.
* RVR 1800 authorized with use of FD or AP or HUD to DA.		

ATIS 125.925	GREAT LAKES APP CON★ 126.45 235.625	SAGINAW TOWER★ 120.1 (CTAF) 257.7	GND CON 121.7	UNICOM 122.95
------------------------	---	---	-------------------------	-------------------------



REIL Rwy 14 and 32	1100	2400	MBS R-016	SEEKS
HIRL Rwy 5-23 and 14-32	2378	hdg 010°		△
FAF to MAP 5.6 NM	2400	233°		
	GS 2.75°	053°		
	TCH 55			
		2378		
		5.6 NM		

CATEGORY	A	B	C	D
S-ILS 5 *		866/24	200 (200-½)	
S-LOC 5	1100/24	434 (500-½)	1100/40	434 (500-¾)
CIRCLING	1100-1 432 (500-1)	1120-1 452 (500-1)	1240-1½ 572 (600-1½)	1240-2 572 (600-2)

EC-1, 16 APR 2026 to 14 MAY 2026

EC-1, 16 APR 2026 to 14 MAY 2026