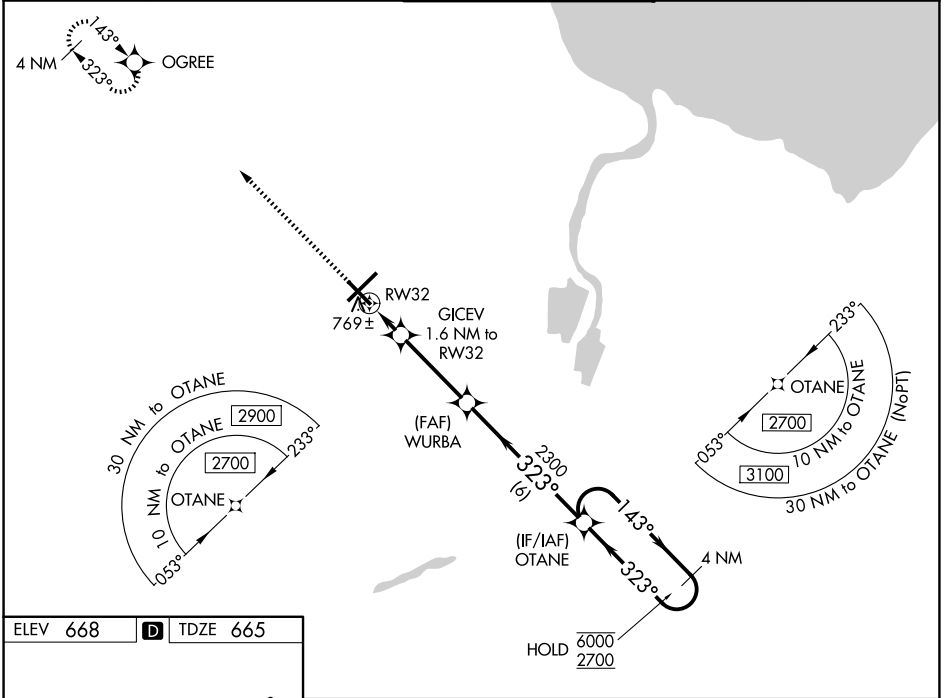


WAAS CH 78011 W32A	APP CRS 323°	Rwy Ldg TDZE Apt Elev	6400 665 668
--	------------------------	-----------------------------	---

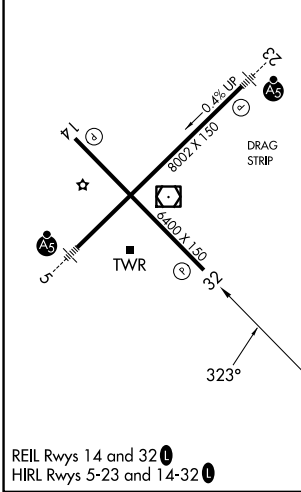
RNAV (GPS) RWY 32

MBS INTL (MBS)

RNP APCH.		MISSED APPROACH: Climb to 2300 direct OGREE and hold.		
<p>▼ For uncompensated Baro-VNAV systems, LNAV/VNAV NA below -18°C or above 54°C.</p>				
ATIS 125.925	GREAT LAKES APP CON★ 126.45 235.625	SAGINAW TOWER★ 120.1 (CTAF) 0 257.7	GND CON 121.7	UNICOM 122.95



ELEV 668	D	TDZE 665
----------	----------	----------



2300	OGREE	4 NM Holding Pattern			
*LNAV only:		GICEV 1.6 NM to RW32	WURBA 2300	OTANE	
RW32		*1 NM to RW32	*1220	143° → 6000	← 323° 2700
1 NM		0.6 NM	3.4 NM	6 NM	
GP 3.00° TCH 50					
CATEGORY	A	B	C	D	
LPV DA	865-3/4		200 (200-3/4)		
LNAV/VNAV DA	950-7/8		285 (300-7/8)		
LNAV MDA	1020-1		355 (400-1)		
CIRCLING	1080-1 412 (500-1)	1120-1 452 (500-1)	1240-1½ 572 (600-1½)	1240-2 572 (600-2)	

EC-1, 16 APR 2026 to 14 MAY 2026

EC-1, 16 APR 2026 to 14 MAY 2026