

VOR/DME MBS <b>114.35</b> Chan <b>90 (Y)</b>	APP CRS <b>131°</b>	Rwy Ldg TDZE Apt Elev <b>6400</b> <b>668</b> <b>668</b>
--	------------------------	--

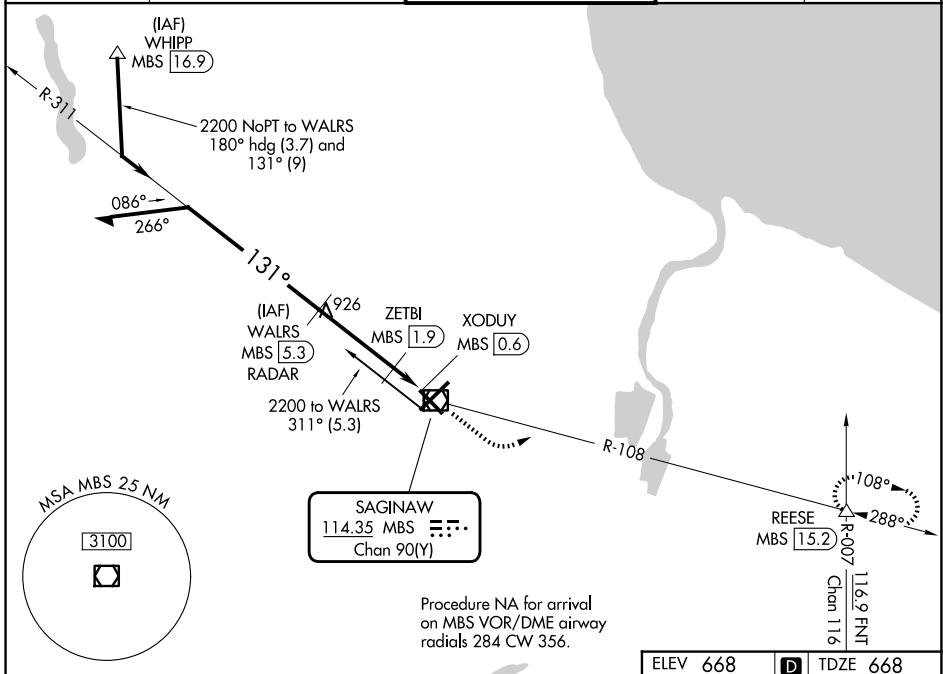
# VOR RWY 14

MBS INTL (MBS)

DME or RADAR required.

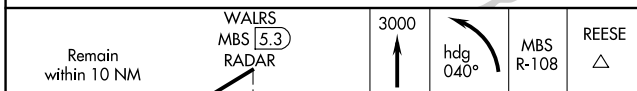
MISSED APPROACH: Climb to 3000 then left turn on heading 040° and MBS R-108 to REESE INT/15.2 DME and hold.

ATIS <b>125.925</b>	GREAT LAKES APP CON★ <b>126.45 235.625</b>	SAGINAW TOWER★ <b>120.1 (CTAF) 257.7</b>	GND CON <b>121.7</b>	UNICOM <b>122.95</b>
------------------------	---	---	-------------------------	-------------------------

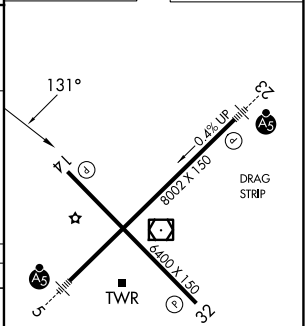
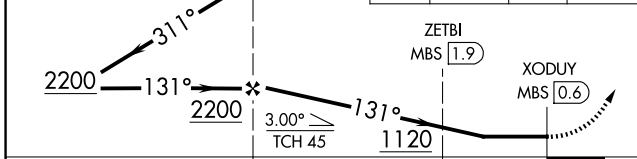


EC-1, 16 APR 2026 to 14 MAY 2026

EC-1, 16 APR 2026 to 14 MAY 2026



ELEV 668	D	TDZE 668
----------	---	----------



CATEGORY	A	B	C	D
S-14	1120-1	452 (500-1)	1120-1 $\frac{3}{8}$	452 (500-1 $\frac{3}{8}$ )
CIRCLING	1120-1	452 (500-1)	1240-1 $\frac{1}{2}$ 572 (600-1 $\frac{1}{2}$ )	1240-2 572 (600-2)
ZETBI FIX MINIMUMS (DME REQUIRED)				
S-14	1040-1	372 (400-1)	1040-1 $\frac{3}{8}$	372 (400-1 $\frac{3}{8}$ )
CIRCLING	1080-1 412 (500-1)	1120-1 452 (500-1)	1240-1 $\frac{1}{2}$ 572 (600-1 $\frac{1}{2}$ )	1240-2 572 (600-2)

REIL Rwy 14 and 32  
HIRL Rwy 5-23 and 14-32