

# BNGLE FIVE DEPARTURE (RNAV)

AL-655 (FAA)

COVINGTON, KENTUCKY

CINCINNATI DEP CON  
 126.65 254.25 (001°-180°)  
 128.7 254.25 (181°-360°)  
 D-ATIS DEP 135.3  
 CLNC DEL 127.175  
 CPDLC  
 GND CON 121.7  
 CINCINNATI TOWER  
 118.3 (RWYS 18C/36C, 9/27)  
 118.975 360.85 (RWY 18L/36R)  
 133.325 (RWY 18R/36L)

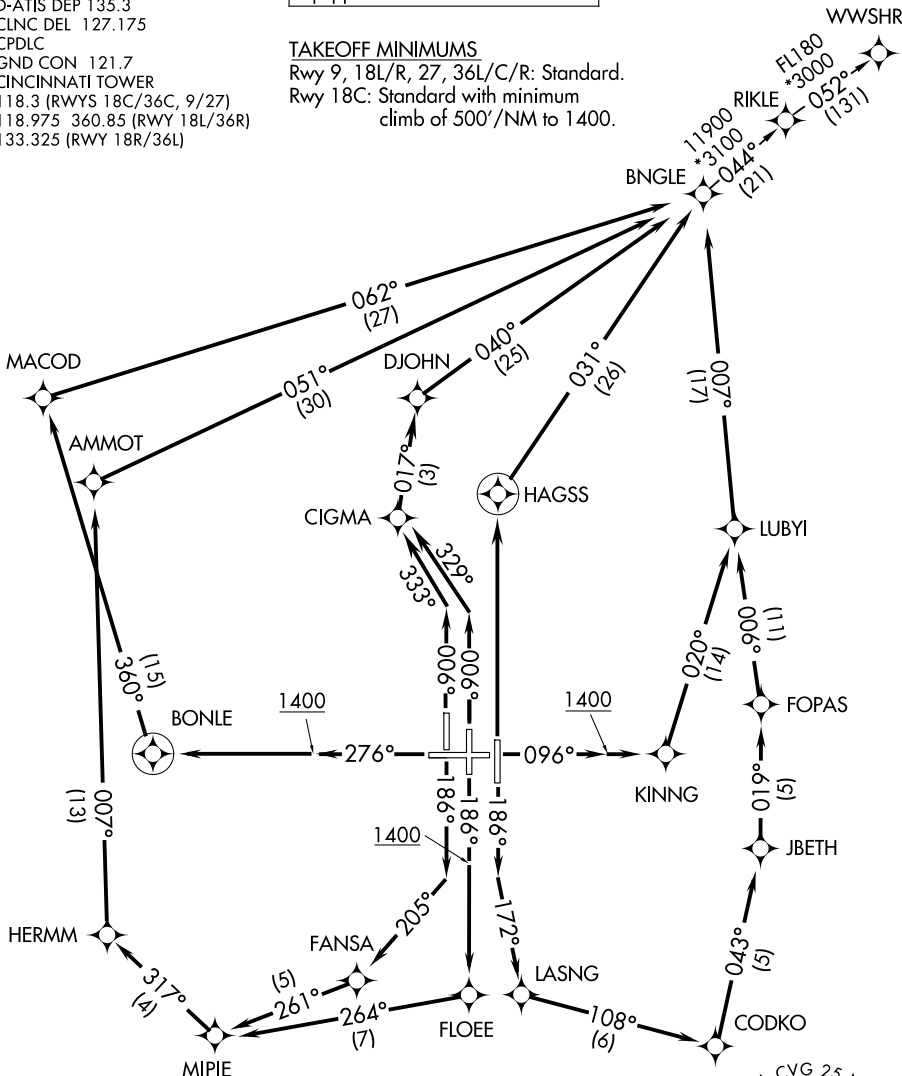
RNAV 1 - DME/DME/IRU or GPS.  
 RADAR required for non-GPS  
 equipped aircraft.

**TOP ALTITUDE:**  
 (JETS) 5000/(PROPS) 4000

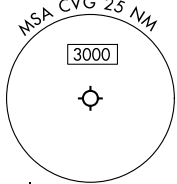
### TAKEOFF MINIMUMS

Rwy 9, 18L/R, 27, 36L/C/R: Standard.  
 Rwy 18C: Standard with minimum  
 climb of 500'/NM to 1400.

WWSHR



NOTE: Increase speed to 250K until reaching/leaving 10000' feet.  
 If unable, advise ATC.  
 NOTE: If unable to accept climb rates, advise ATC  
 on initial contact.  
 NOTE: Transponder code will be issued via PDC or  
 Cincinnati CLNC DEL.



(CONTINUED ON FOLLOWING PAGE)

NOTE: Chart not to scale.

# BNGLE FIVE DEPARTURE (RNAV)

COVINGTON, KENTUCKY

SE-1, 16 APR 2026 to 14 MAY 2026

SE-1, 16 APR 2026 to 14 MAY 2026