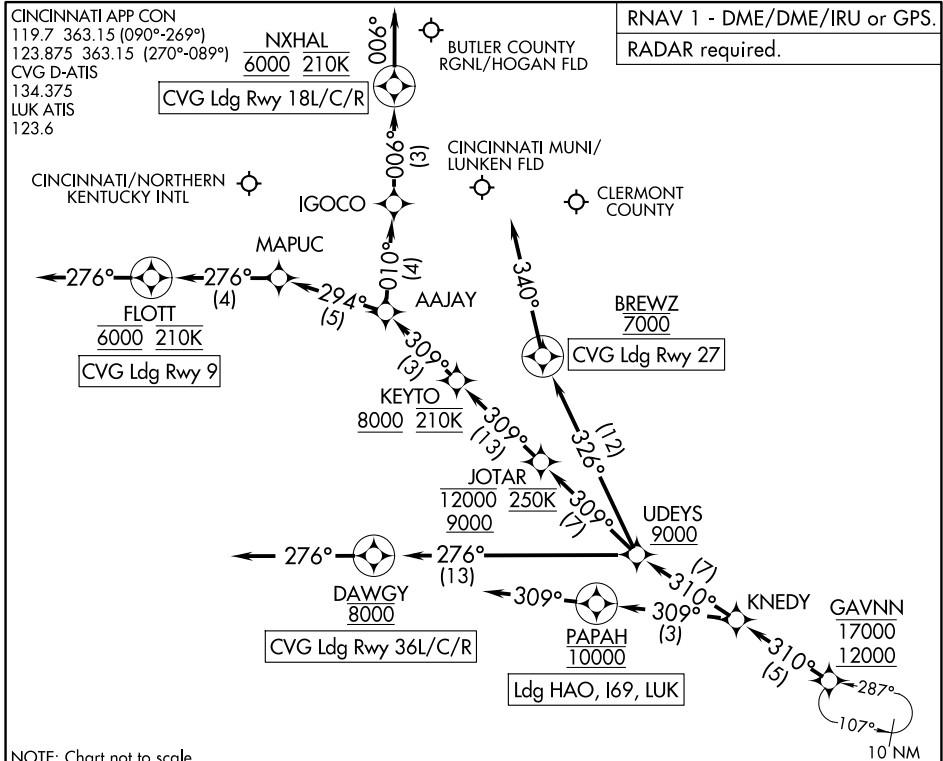


# GAVNN EIGHT ARRIVAL (RNAV) Arrival Routes

COVINGTON, KENTUCKY



NOTE: Chart not to scale.

## ARRIVAL ROUTE DESCRIPTION

**CVG:** From GAVNN on track 310° to KNEDY, then on track 310° to cross UDEYS at or above 9000.

**LANDING CVG RUNWAY 9:** From UDEYS on track 309° to cross JOTAR between 9000 and 12000 and at 250K, then on track 309° to cross KEYTO at or above 8000 and at 210K, then on track 309° to AAJAY, then on track 294° to MAPUC, then on track 276° to cross FLOTT at 6000 and at 210K, then on track 276°. Expect RADAR vectors to final approach course for ILS, GPS, or RNP Rwy 9 approach.

**LANDING CVG RUNWAYS 18L/C/R:** From UDEYS on track 309° to cross JOTAR between 9000 and 12000 and at 250K, then on track 309° to cross KEYTO at or above 8000 and at 210K, then on track 309° to AAJAY, then on track 010° to IGOCO, then on track 006° to cross NXHAL at 6000 and at 210K, then on track 006°. Expect RADAR vectors to final approach course for ILS, GPS, or RNP Rwy 18L/C/R approach.

**LANDING CVG RUNWAY 27:** From UDEYS on track 326° to cross BREWZ at 7000, then on heading 340°. Expect RADAR vectors to final approach course for ILS, GPS, or RNP Rwy 27 approach.

**LANDING CVG RUNWAYS 36L/C/R:** From UDEYS on track 276° to cross DAWGY at 8000, then on track 276°. Expect RADAR vectors to final approach course for ILS, GPS, or RNP Rwy 36L/C/R approach.

**LANDING I69/LUK/HAO:** From GAVNN on track 310° to KNEDY, then on track 309° to cross PAPA at 10000, then on track 309°. Expect RADAR vectors to final approach course.

SE-1, 16 APR 2026 to 14 MAY 2026

SE-1, 16 APR 2026 to 14 MAY 2026