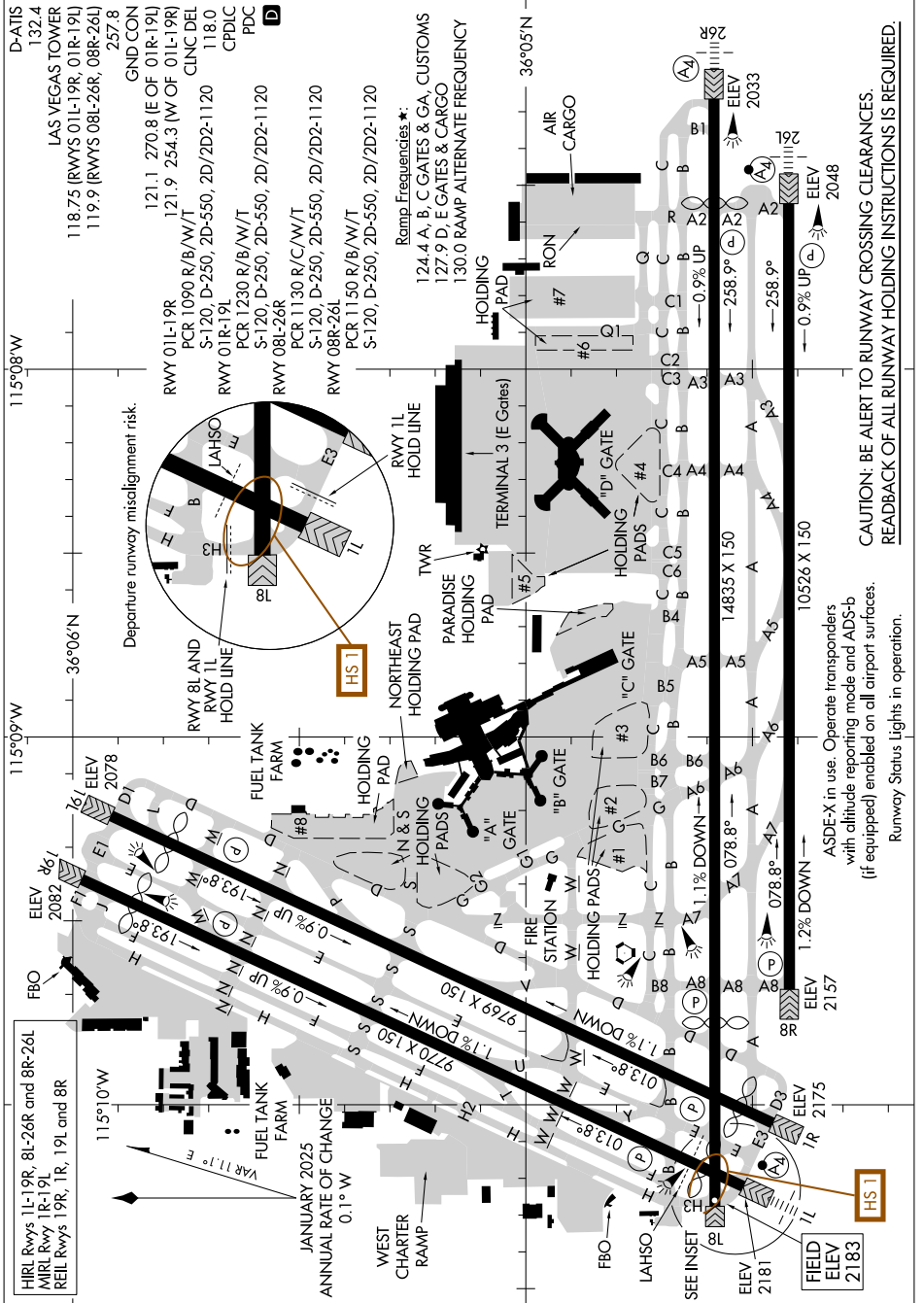


AIRPORT DIAGRAM

AL-662 (FAA)

HARRY REID INTL (LAS)
LAS VEGAS, NEVADA

SW-4, 16 APR 2026 to 14 MAY 2026



AIRPORT DIAGRAM

LAS VEGAS, NEVADA
HARRY REID INTL (LAS)

SW-4, 16 APR 2026 to 14 MAY 2026

CAUTION: BE ALERT TO RUNWAY CROSSING CLEARANCES.
READBACK OF ALL RUNWAY HOLDING INSTRUCTIONS IS REQUIRED.

ASDE-X in use. Operate transponders with altitude reporting mode and ADS-B (if equipped) enabled on all airport surfaces. Runway Status Lights in operation.