

GIDGT THREE DEPARTURE (RNAV) Departure Routes

**TOP ALTITUDE:
FL190**

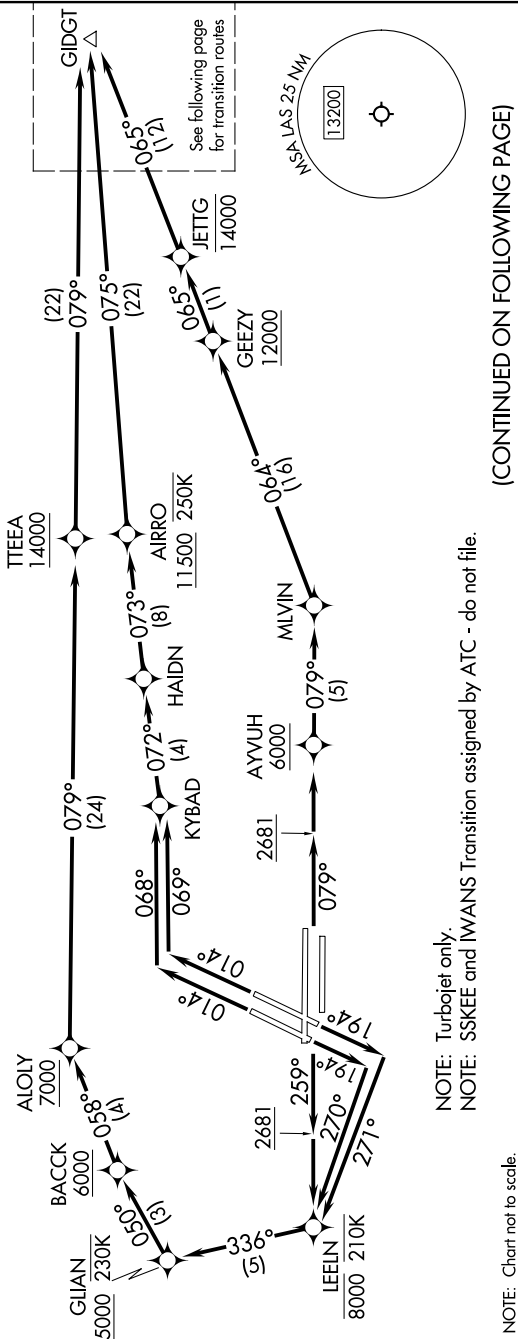
RNAV 1 - DME/DME/IRU or GPS.

RADAR required for non-GPS equipped aircraft.

- LAS VEGAS DEP CON 133.95 353.7
- D-ATIS 132.4
- CINC DEL 118.0
- CPDLC GND CON 121.1 270.8 E of 1R/19L
- 121.9 254.3 W of 1L/19R
- LAS VEGAS TOWER 118.75 257.8 (Rwys 1L/19R, 1R/19L)
- 119.9 257.8 (Rwys 8L/26R, 8R/26L)

TAKEOFF MINIMUMS

- Rwy 1L: Standard with minimum climb of 500'/NM to 2681, then 286'/NM to 4900.
- Rwy 1R: Standard with minimum climb of 500'/NM to 2681, then 295'/NM to 4900.
- Rwys 8L/R, 19L/R: Standard with minimum climb of 500'/NM to 2681.
- Rwy 26L: Standard with minimum climb of 500'/NM to 2681, then 204'/NM to 4100.
- Rwy 26R: Standard with minimum climb of 500'/NM to 2681, then 271'/NM to 4100.



NOTE: Turbbojet only.
 NOTE: SSKEE and IWANS Transition assigned by ATC - do not file.

NOTE: Chart not to scale.

(CONTINUED ON FOLLOWING PAGE)

GIDGT THREE DEPARTURE (RNAV) Departure Routes