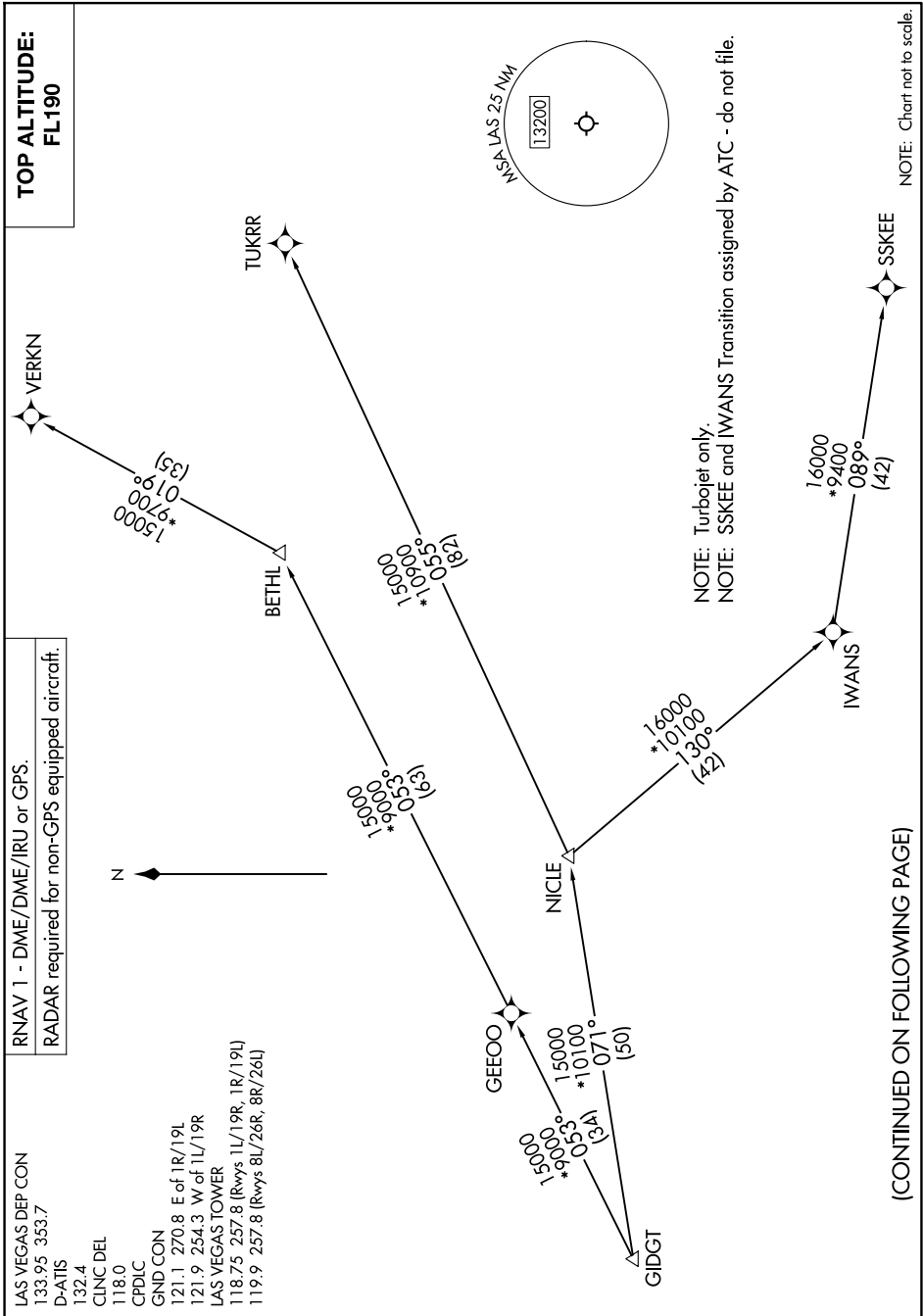


# GIDGT THREE DEPARTURE (RNAV) Transition Routes

SW-4, 16 APR 2026 to 14 MAY 2026



RNAV 1 - DME/DME/IRU or GPS.  
 RADAR required for non-GPS equipped aircraft.

LAS VEGAS DEP CON  
 133.95 353.7  
 D-ATIS  
 132.4  
 CLNC DEL  
 118.0  
 CPDLC  
 GND CON  
 121.1 270.8 E of 1R/19L  
 121.9 254.3 W of 1L/19R  
 LAS VEGAS TOWER  
 118.75 257.8 (Rwys 1L/19R, 1R/19L)  
 119.9 257.8 (Rwys 8L/26R, 8R/26L)

**TOP ALTITUDE:  
 FL190**

NOTE: Turbojet only.  
 NOTE: SSKEE and IWANS Transition assigned by ATC - do not file.

NOTE: Chart not to scale.

(CONTINUED ON FOLLOWING PAGE)

SW-4, 16 APR 2026 to 14 MAY 2026