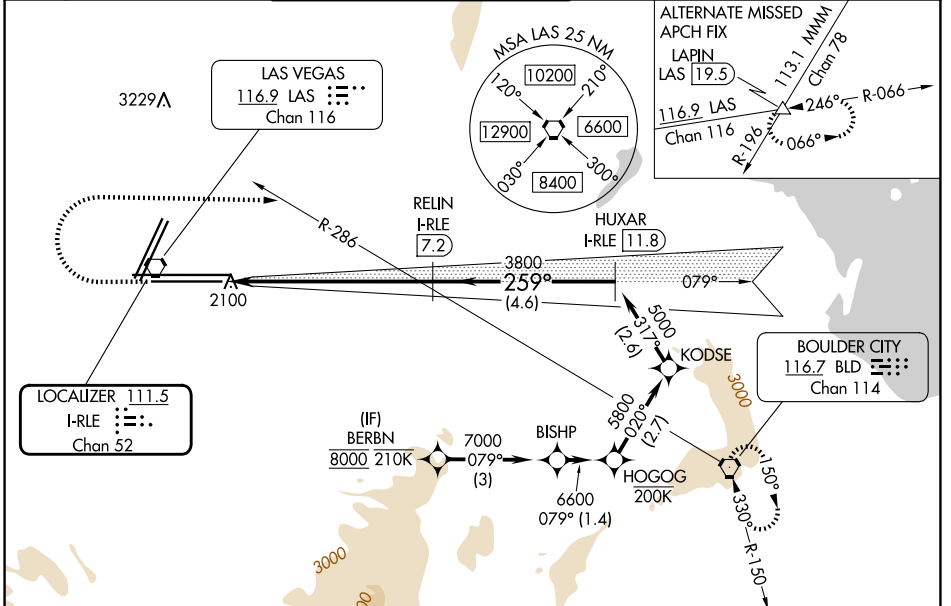


LOC/DME I-RLE 111.5 Chan 52	APP CRS 259°	Rwy Ldg 26L 10526 26R 12638 TDZE 2069 2067 Apt Elev 2181 2181
---	------------------------	---

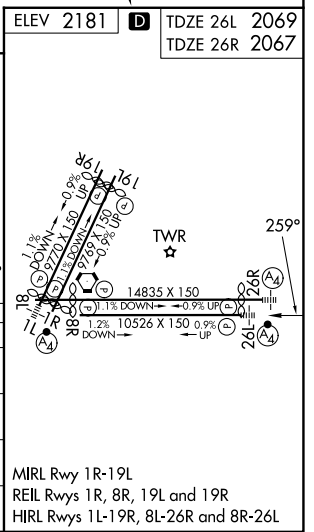
ILS Y or LOC Y RWY 26L

HARRY REID INTL (LAS)

RNP APCH - GPS. DME required.	MALSF Rwy 26L 	MALS Rwy 26R 	MISSED APPROACH: Climb to 3200 then climbing right turn to 6000 heading 080° and on BLD R-286 to BLD VORTAC and hold, continue climb-in-hold to 6000.		
Inop table does not apply to S-ILS 26L or Sidestep 26R. For inop ALS increase S-LOC 26L Cats C and D visibility to 1 3/8 SM.					
D-ATIS 132.4	LAS VEGAS APP CON 125.025 379.15 (West) 119.775 282.2 (East)	LAS VEGAS TOWER 118.75 257.8 (Rwy 1L/19R, 1R/19L) 119.9 257.8 (Rwy 8L/26R, 8R/26L)	GND CON 121.1 270.8 E of 1R/19L 121.9 254.3 W of 1L/19R	CLNC DEL 118.0	CPDLC



3200	6000	BLD R-286	BLD	VGSI and ILS glidepath not coincident (VGSI Angle 3.00/TCH 84).	BERBN
		hdg 080°			
		I-RLE 1.9	I-RLE 3.1	I-RLE 7.2	I-RLE 11.8
		3800	3800	5000	6600
		1.2 NM	4.1 NM	4.6 NM	2.6
					2.7
					1.4
					3 NM
					079°
					8000
					GS 3.00°
					TCH 60
CATEGORY	A	B	C	D	
S-ILS 26L	2269-3/4 200 (100-3/4)				
S-LOC 26L	2520-3/4	451 (400-3/4)	2520-1	451 (400-1)	
SIDESTEP 26R	2560-1	493 (400-1)	2560-1 1/2	493 (400-2)	
CIRCLING	3020-1 1/4	3060-1 1/4	3100-2 3/4	3540-3	
	839 (900-1 1/4)	879 (900-1 1/4)	919 (1000-2 3/4)	1359 (1400-3)	



SW-4, 16 APR 2026 to 14 MAY 2026

SW-4, 16 APR 2026 to 14 MAY 2026