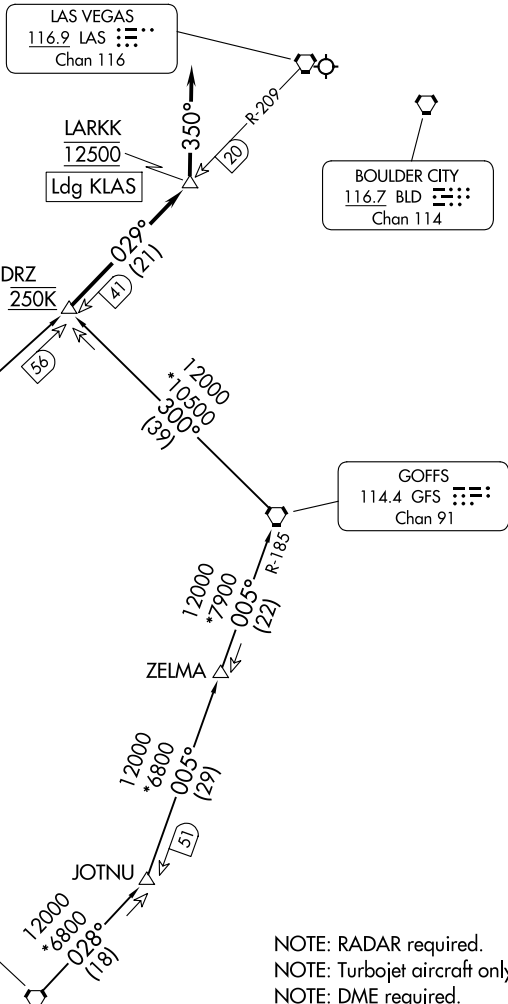


(RNRZ.LARKK1) 24025
LARKK ONE ARRIVAL

HARRY REID INTL (L.A.S)
 LAS VEGAS, NEVADA

AL-662 (FAA)

LAS VEGAS APP CON
 125.025 379.15
 D-ATIS
 132.4
 LAS VEGAS TOWER
 118.75 257.8 (Rwys 1L/19R, 1R/19L)
 119.9 257.8 (Rwys 8L/26R, 8R/26L)



SW-4, 16 APR 2026 to 14 MAY 2026

SW-4, 16 APR 2026 to 14 MAY 2026

NOTE: Chart not to scale.

NOTE: RADAR required.
 NOTE: Turbojet aircraft only.
 NOTE: DME required.

ARRIVAL ROUTE DESCRIPTION

DAGGETT TRANSITION (DAG.LARKK1): From over DAG VORTAC on DAG R-032 to RNRZ, thence. . . .

TWENTYNINE PALMS TRANSITION (TNP.LARKK1): From over TNP VORTAC on TNP R-028 and GFS R-185 to GFS VORTAC, then on GFS R-300 to RNRZ, thence. . . .

. . . from over RNRZ on LAS R-209 to cross LARKK at 12500, then depart LARKK heading 350° for vectors to final approach.

LOST COMMUNICATIONS: Proceed to BLD VORTAC and hold. Maintain 8000 or last assigned altitude whichever is greater.

LARKK ONE ARRIVAL
 (RNRZ.LARKK1) 25FEB21

LAS VEGAS, NEVADA
 HARRY REID INTL (L.A.S)