

WAAS CH <b>42800</b> <b>W01A</b>	APP CRS <b>014°</b>	Rwy Ldg TDZE Apt Elev <b>8784</b> <b>2170</b> <b>2181</b>
--	------------------------	--

# RNAV (GPS) RWY 1R

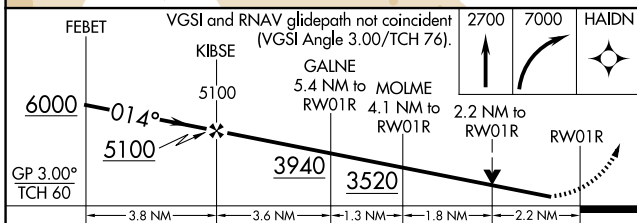
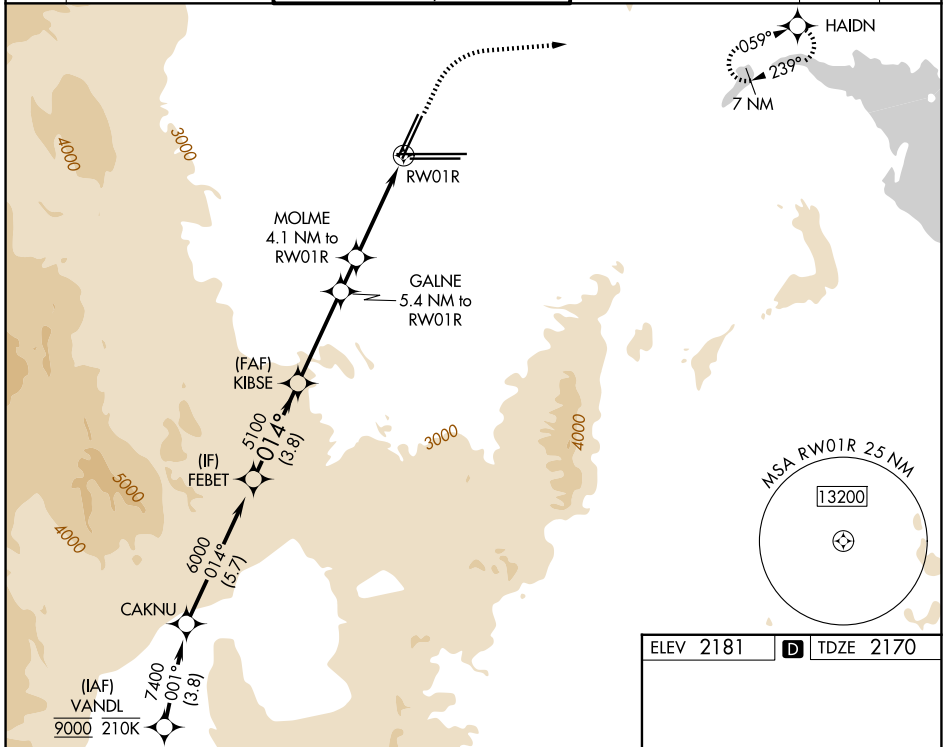
HARRY REID INTL (LAS)

RNP APCH - GPS. RADAR required.

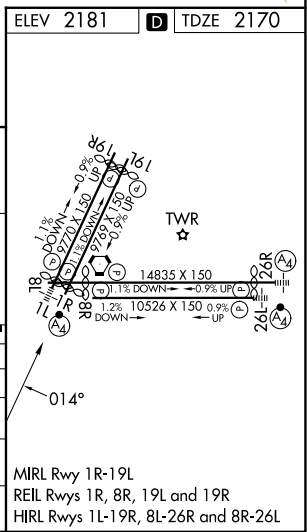
MISSED APPROACH: Climb to 2700 then climbing right turn to 7000 direct HAIN and hold, continue climb-in-hold to 7000.

Rwy 1R helicopter visibility reduction below 3/4 SM NA. For uncompensated Baro-VNAV systems, LNAV/VNAV NA below 0°C or above 54°C.

D-ATIS <b>132.4</b>	LAS VEGAS APP CON <b>125.025 379.15</b> (West) <b>119.775 282.2</b> (East)	LAS VEGAS TOWER <b>118.75 257.8</b> (Rwy 1L/19R, 1R/19L) <b>119.9 257.8</b> (Rwy 8L/26R, 8R/26L)	GND CON <b>121.1 270.8</b> E of 1R/19L <b>121.9 254.3</b> W of 1L/19R	CLNC DEL <b>118.0</b>	CPDLC
------------------------	--	--	---	--------------------------	-------



CATEGORY	A	B	C	D
LPV DA		2458-7/8	288 (300-7/8)	
LNAV/VNAV DA		2641-13/8	471 (500-13/8)	
LNAV MDA	2960-1 790 (800-1)	2960-1 1/4 790 (800-1 1/4)	2960-2 1/2 790 (800-2 1/2)	790 (800-2 1/2)
CIRCLING	3020-1 1/4 839 (900-1 1/4)	3060-1 1/4 879 (900-1 1/4)	3100-2 3/4 919 (1000-2 3/4)	3540-3 1359 (1400-3)



SW-4, 16 APR 2026 to 14 MAY 2026

SW-4, 16 APR 2026 to 14 MAY 2026