

APP CRS	Rwy Ldg	<b>8416</b>
<b>194°</b>	TDZE	<b>2117</b>
	Apt Elev	<b>2181</b>

# RNAV (RNP) Z RWY 19R

HARRY REID INTL (LAS)

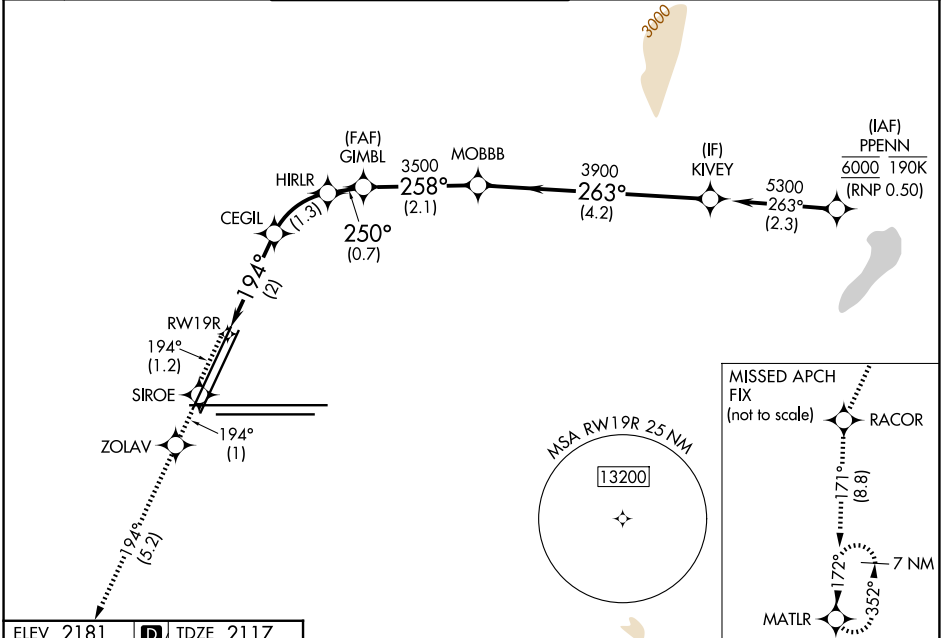
RNP AR APCH - GPS, RF, min RNP 0.50. Authorization required. Missed approach requires RNP < 1.00.

MISSED APPROACH: Climb to 7000 on the RNAV missed approach route to MATLR and hold, continue climb-in-hold to 7000.

For uncompensated Baro-VNAV systems, procedure NA below 0°C or above 54°C.

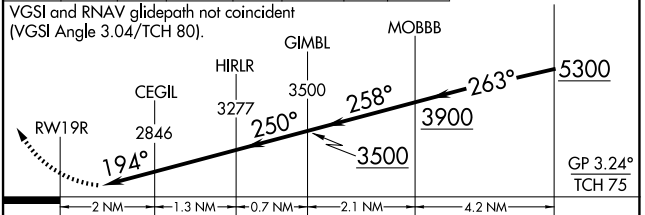
\*Missed approach requires minimum climb of 273 feet per NM to 2940.  
#Missed approach requires minimum climb of 235 feet per NM to 2960.

D-ATIS <b>132.4</b>	LAS VEGAS APP CON	LAS VEGAS TOWER	GND CON	CLNC DEL <b>118.0</b>	CPDLC
	<b>125.025 379.15</b> (West) <b>119.775 282.2</b> (East)	<b>118.75 257.8</b> (Rwy 1L/19R, 1R/19L) <b>119.9 257.8</b> (Rwy 8L/26R, 8R/26L)	<b>121.1 270.8</b> E of 1R/19L <b>121.9 254.3</b> W of 1L/19R		



ELEV 2181	<b>D</b>	TDZE 2117
-----------	----------	-----------

7000	SIROE	ZOLAV	RACOR	MATLR	KIVEY
↑ fr 194°	tr 194°	tr 194°	tr 171°		



CATEGORY	A	B	C	D
RNP 0.10 DA*	2558-1 <sup>3</sup> / <sub>8</sub> 441 (400-1 <sup>3</sup> / <sub>8</sub> )			
RNP 0.20 DA#	2608-1 <sup>3</sup> / <sub>8</sub> 491 (500-1 <sup>3</sup> / <sub>8</sub> )			
RNP 0.30 DA	2669-1 <sup>3</sup> / <sub>8</sub> 552 (500-1 <sup>3</sup> / <sub>8</sub> )			

MIRL Rwy 1R-19L  
REIL Rwy 1R, 8R, 19L and 19R  
HIRL Rwy 1L-19R, 8L-26R and 8R-26L

## AUTHORIZATION REQUIRED

SW-4, 16 APR 2026 to 14 MAY 2026

SW-4, 16 APR 2026 to 14 MAY 2026