

VORTAC LAS 116.9 Chan 116	APP CRS 262°	Rwy Ldg	26L	26R
		TDZE	10526	12638
		Apt Elev	2069	2067
			2181	2181

VOR RWY 26L/R

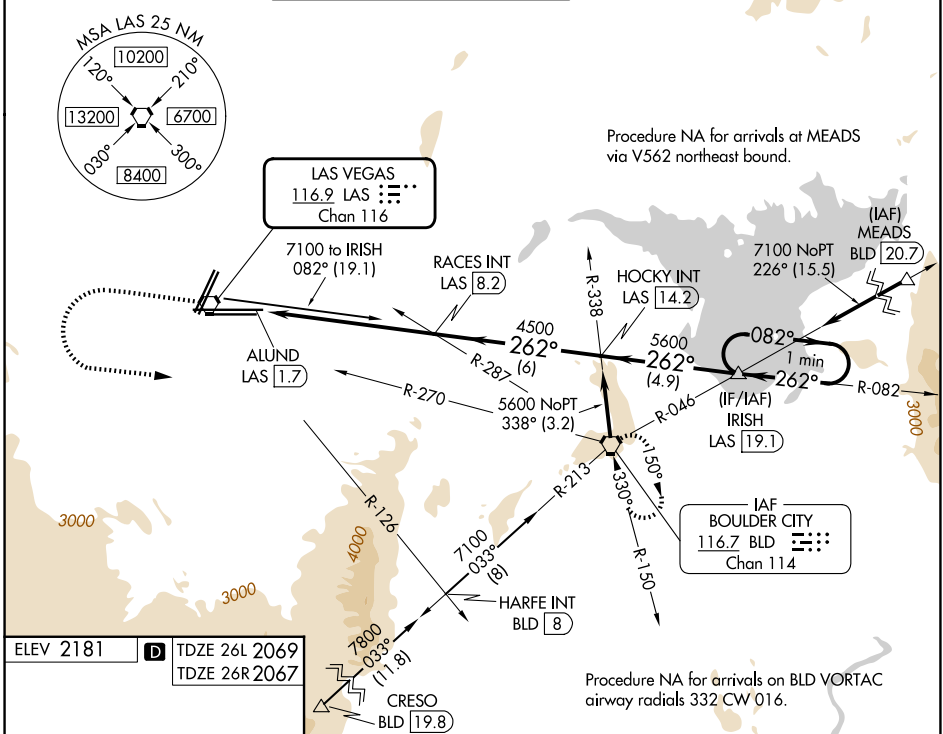
HARRY REID INTL (LAS)

⚠ For inop ALS, increase S-26L and S-26R Cat D visibility ¼ SM.

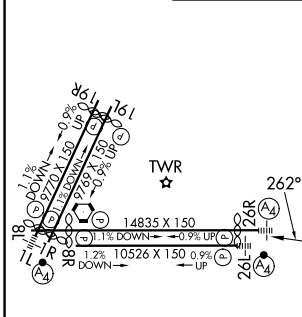
MALSF Rwy 26L	MALS Rwy 26R

MISSED APPROACH: Climb to 4000 then climbing left turn to 6000 on heading 074° and BLD R-270 to BLD VORTAC and hold.

D-ATIS 132.4	LAS VEGAS APP CON 125.025 379.15 (West) 119.775 282.2 (East)	LAS VEGAS TOWER 118.75 257.8 (Rwy 1L/19R, 1R/19L) 119.9 257.8 (Rwy 8L/26R, 8R/26L)	GND CON 121.1 270.8 E of 1R/19L 121.9 254.3 W of 1L/19R	CLNC DEL 118.0	CPDLC
------------------------	--	--	---	--------------------------	-------



ELEV 2181	D TDZE 26L 2069 TDZE 26R 2067
-----------	---



REIL Rwy 1R, 8R, 19L and 19R					
MIRL Rwy 1R-19L					
HIRL Rwy 1L-19R, 8L-26R and 8R-26L					
FAF to MAP 6.5 NM					
Knots	60	90	120	150	180
Min:Sec	6:30	4:20	3:15	2:36	2:10

CATEGORY	A		B		C		D	
	2720-¾		651 (600-¾)		2720-1½		651 (600-1½)	
S-26L	2720-¾		651 (600-¾)		2720-1½		651 (600-1½)	
S-26R	2720-¾		653 (600-¾)		2720-1½		653 (600-1½)	
CIRCLING	3020-1¼		3060-1¼		3100-2¾		3540-3	
	839 (900-1¼)		879 (900-1¼)		919 (1000-2¾)		1359 (1400-3)	

SW-4, 16 APR 2026 to 14 MAY 2026

SW-4, 16 APR 2026 to 14 MAY 2026