

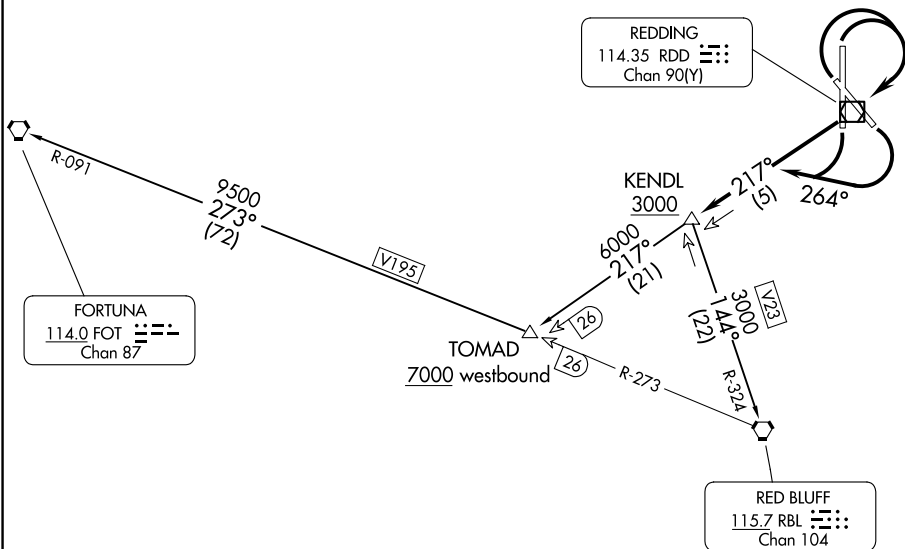
KENDL FOUR DEPARTURE

AL-688 (FAA)

REDDING RGNL (R.DD)
REDDING, CALIFORNIA

OAKLAND CENTER
132.2 350.3
ATIS
124.1
REDDING TOWER*
119.8 269.25

**TOP ALTITUDE:
ASSIGNED BY ATC**



REDDING
114.35 RDD
Chan 90(Y)

FORTUNA
114.0 FOT
Chan 87

RED BLUFF
115.7 RBL
Chan 104

TAKEOFF MINIMUMS

- Rwys 12: Standard with minimum climb of 410' per NM to 3000.
- Rwy 16: Standard with minimum climb of 495' per NM to 3000.
- Rwy 30: Standard with minimum climb of 440' per NM to 3000.
- Rwy 34: Standard with minimum climb of 410' per NM to 3000.

NOTE: Chart not to scale.

DEPARTURE ROUTE DESCRIPTION

TAKEOFF RUNWAYS 12 and 16: Climbing right turn heading 264° to intercept RDD VOR/DME R-217 to KENDL, cross KENDL at or above 3000, thence . . .

TAKEOFF RUNWAYS 30 and 34: Climbing right turn direct RDD VOR/DME then on RDD VOR/DME R-217 to KENDL, cross KENDL at or above 3000, thence . . .

. . . via (transition) or (assigned route) maintain ATC assigned altitude.

FORTUNA TRANSITION (KENDL4.FOT): From over KENDL on RDD R-217 to TOMAD, thence on RBL R-273 and FOT R-091 to FOT VORTAC.

RED BLUFF TRANSITION (KENDL4.RBL): From over KENDL on RBL R-324 to RBL VORTAC.

TOMAD TRANSITION (KENDL4.TOMAD): From over KENDL on RDD R-217 to TOMAD.

KENDL FOUR DEPARTURE

SW-2, 16 APR 2026 to 14 MAY 2026

SW-2, 16 APR 2026 to 14 MAY 2026