

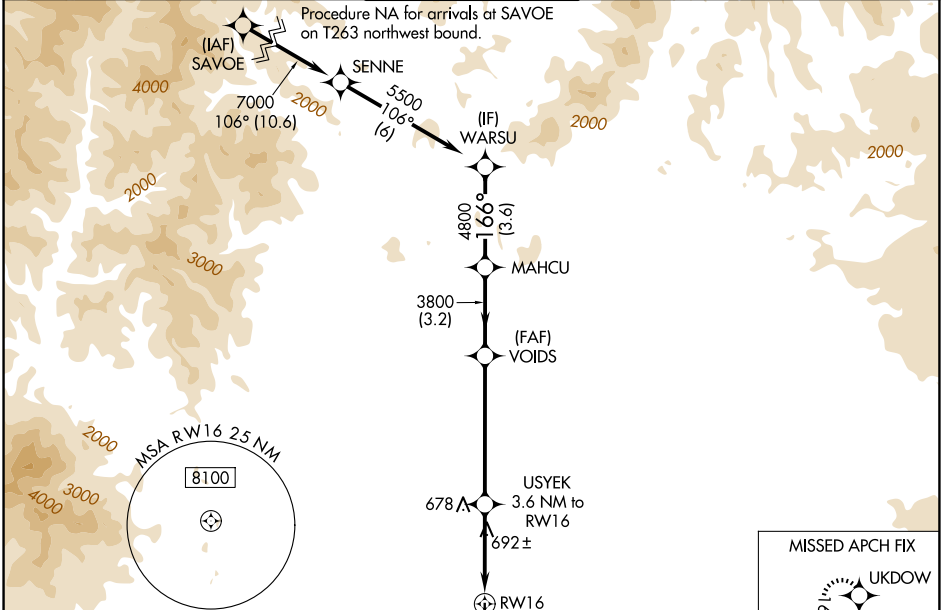
WAAS CH 86443 W16A	APP CRS 166°	Rwy Ldg TDZE 505 Apt Elev 505	7003
--	------------------------	---	-------------

RNAV (GPS) RWY 16

REDDING RGNL (RDD)

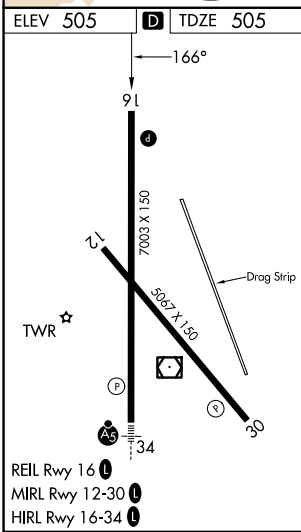
RNP APCH.		MISSED APPROACH: Climb to 3000 direct UKDOW and hold.		
<p>▼ Rwy 16 helicopter visibility reduction below 3/4 SM NA. ▲ For uncompensated Baro-VNAV systems, LNAV/VNAV NA below -4°C or above 53°C.</p>				

ATIS 124.1	OAKLAND CENTER 132.2 350.3	REDDING TOWER * 119.8 (CTAF) 0 269.25	GND CON 121.7	UNICOM 122.95
----------------------	--------------------------------------	---	-------------------------	-------------------------



SW-2, 16 APR 2026 to 14 MAY 2026

SW-2, 16 APR 2026 to 14 MAY 2026



ELEV 505	D TDZE 505				
<p>3000 UKDOW</p> <p>↑</p> <p>VGSI and RNAV glidepath not coincident (VGSI Angle 3.43/TCH 40).</p>					
<p>*LNAV only.</p> <p>*1.3 NM to RW16</p>		USYEK 3.6 NM to RW16	VOIDS 3800	MAHCU 4800	WARSU 5500
<p>1860*</p> <p>3800</p>		<p>GP 3.43° TCH 55</p>			
<p>1.3 NM</p> <p>2.3 NM</p> <p>5.3 NM</p> <p>3.2 NM</p> <p>3.6 NM</p>					
CATEGORY	A	B	C	D	
LPV DA	755-3/4	250 (300-3/4)	775-7/8		270 (300-7/8)
LNAV/VNAV DA	892-1 1/8 387 (400-1 1/8)				
LNAV MDA	960-1	455 (500-1)	960-1 3/8	455 (500-1 1/8)	
CIRCLING	960-1 455 (500-1)	1000-1 495 (500-1)	1120-1 3/4 615 (700-1 3/4)	1340-2 3/4 835 (900-2 3/4)	