

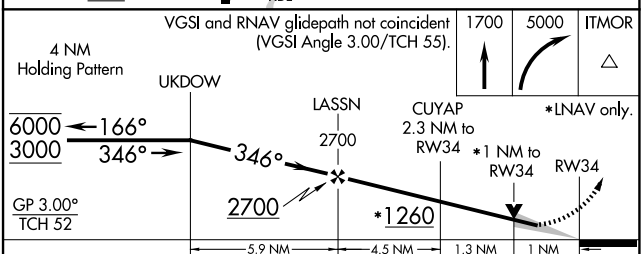
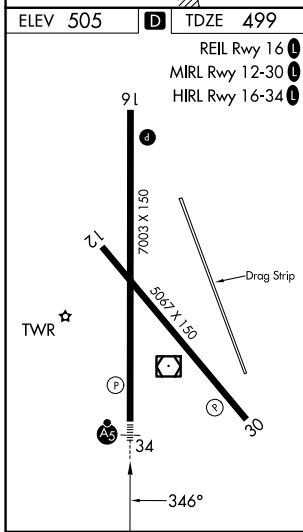
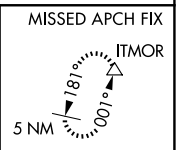
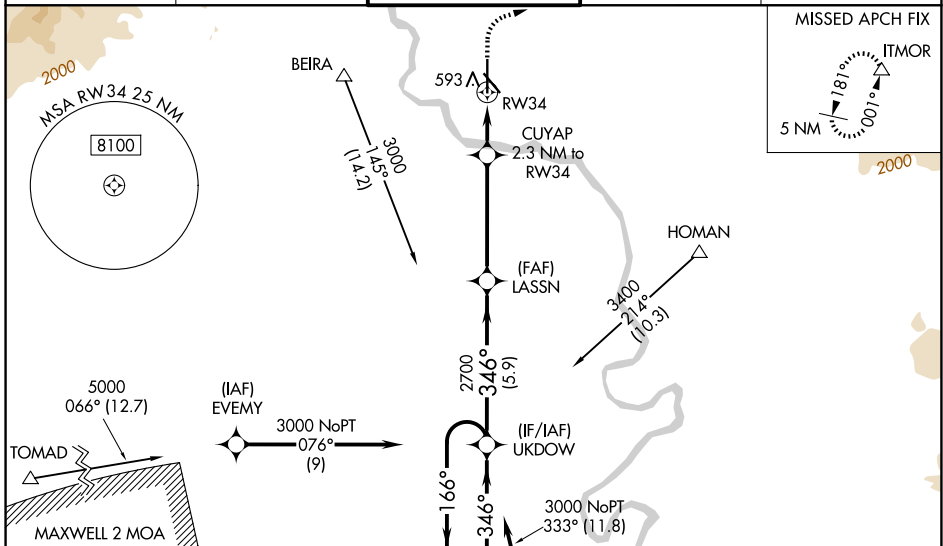
WAAS CH <b>56402</b> <b>W34A</b>	APP CRS <b>346°</b>	Rwy Ldg TDZE Apt Elev	<b>6997</b> <b>499</b> <b>505</b>
--	------------------------	-----------------------------	---

# RNAV (GPS) RWY 34

REDDING RGNL (RDD)

RNP APCH.	MALS R	MISSED APPROACH: Climb to 1700 then climbing right turn to 5000 direct ITMOR, continue climb-in-hold to 5000.
<p><b>⚠</b> For uncompensated Baro-VNAV systems, LNAV/VNAV NA below -4°C or above 54°C. For inop ALS, increase LNAV/VNAV all Cats visibility to ¾ SM and LNAV Cat C, D visibility to 1 SM.</p>		

ATIS <b>124.1</b>	OAKLAND CENTER <b>132.2 350.3</b>	REDDING TOWER ★ <b>119.8(CTAF) 0 269.25</b>	GND CON <b>121.7</b>	UNICOM <b>122.95</b>
----------------------	--------------------------------------	--	-------------------------	-------------------------



CATEGORY	A	B	C	D
LPV DA		699-½	200 (200-½)	
LNAV/VNAV DA		754-½	255 (300-½)	
LNAV MDA	860-½	361 (400-½)	860-⅝	361 (400-⅝)
CIRCLING	940-1 435 (500-1)	1000-1 495 (500-1)	1120-1¾ 615 (700-1¾)	1340-2¾ 835 (900-2¾)

SW-2, 16 APR 2026 to 14 MAY 2026

SW-2, 16 APR 2026 to 14 MAY 2026