

WAAS CH 82038 W18A	APP CRS 180°	Rwy Idg 5298 TDZE 680 Apt Elev 682
--	------------------------	---

RNAV (GPS) RWY 18

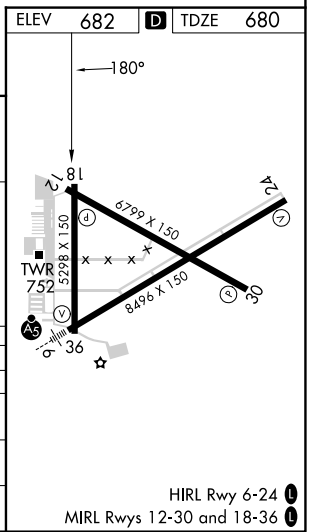
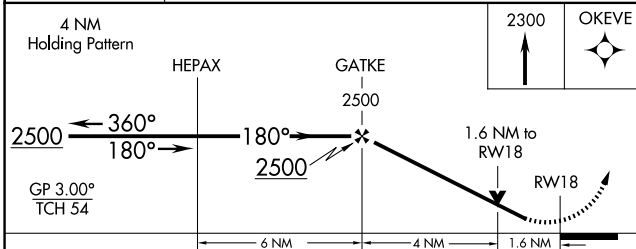
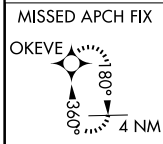
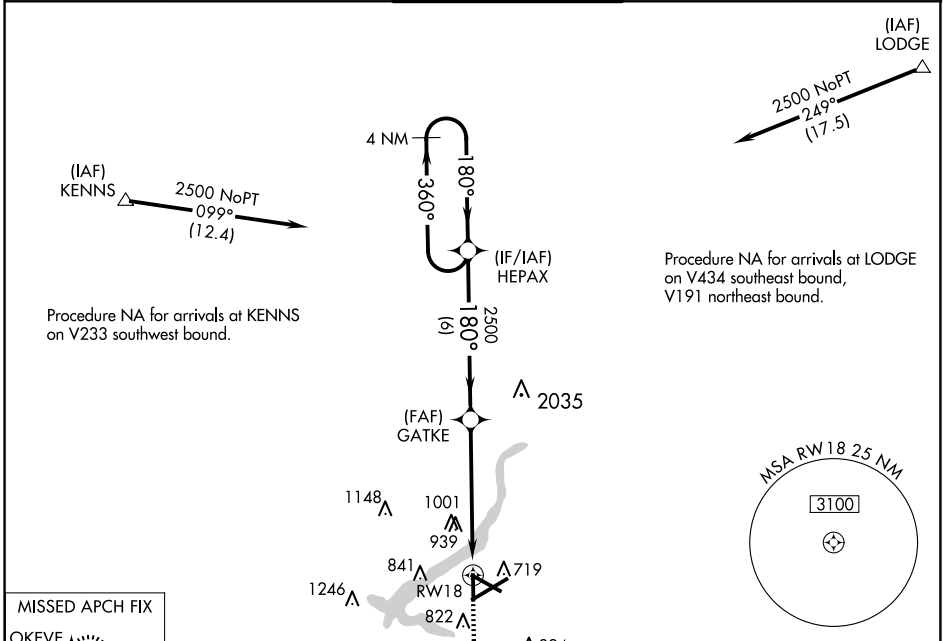
DECATUR (DEC)

RNP APCH - GPS.

- ▼ For uncompensated Baro-VNAV systems, LNAV/VNAV NA below -19°C or above 54°C.
- ▲ Rwy 18 helicopter visibility reduction below 3/4 SM NA.

MISSED APPROACH:
Climb to 2300 direct
OKEVE and hold.

ATIS 126.35	CHAMPAIGN APP CON* 132.85 290.225	DECATUR TOWER* 118.9 (CTAF) 0 291.775	GND CON 121.75 291.775	UNICOM 122.95
-----------------------	---	---	----------------------------------	-------------------------



CATEGORY	A	B	C	D
LPV DA		952-7/8	272 (300-7/8)	
LNAV/VNAV DA		1279-17/8	599 (600-17/8)	
LNAV MDA	1240-1	560 (600-1)	1240-15/8	560 (600-15/8)
CIRCLING	1240-1	558 (600-1)	1360-2 678 (700-2)	1360-2 1/4 678 (700-2 1/4)

HIRL Rwy 6-24
MIRL Rws 12-30 and 18-36

EC-3, 16 APR 2026 to 14 MAY 2026

EC-3, 16 APR 2026 to 14 MAY 2026