

WAAS CH 45738 W36A	APP CRS 360°	Rwy Idg TDZE Apt Elev	5298 678 682
--	------------------------	-----------------------------	---

RNAV (GPS) RWY 36

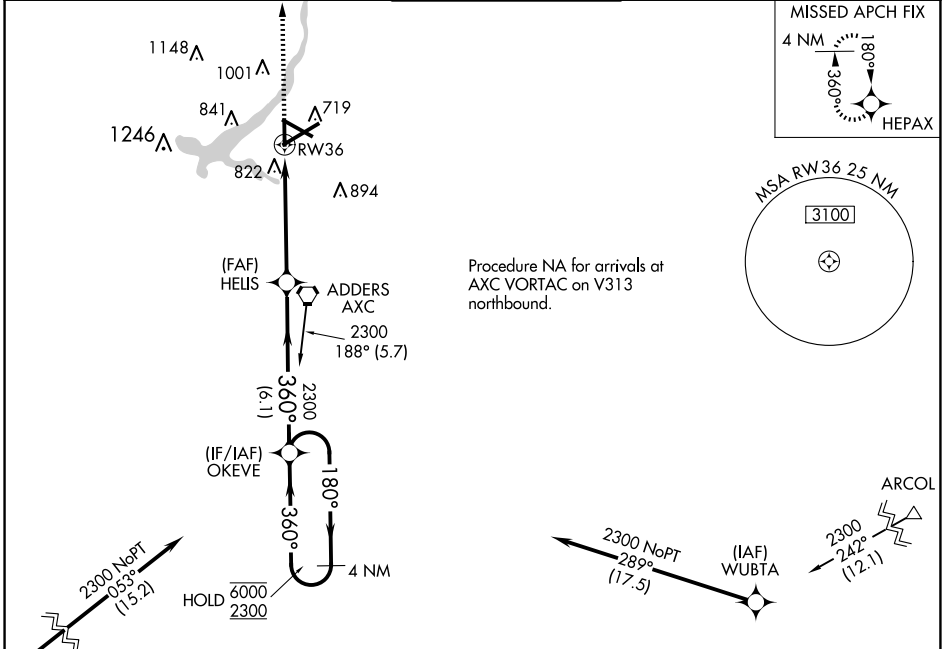
DECATUR (DEC)

RNP APCH

Baro-VNAV and VDP NA when using Lincoln altimeter setting. For uncompensated Baro-VNAV systems, LNAV/VNAV NA below -19°C or above 54°C. When local altimeter setting not received, use Lincoln altimeter setting and increase all DA/MDA 80 feet, increase LPV all Cats visibility ¼ SM, LNAV/VNAV all Cats visibility ¼ SM, LNAV Cat C/D and Circling Cat C/D visibility ¾ SM.

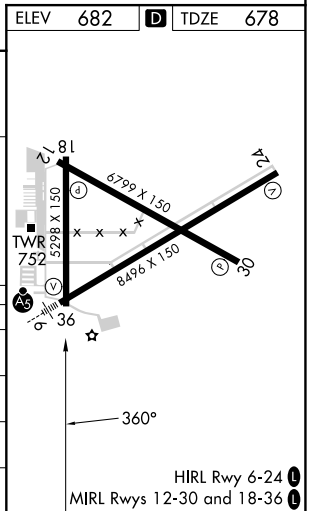
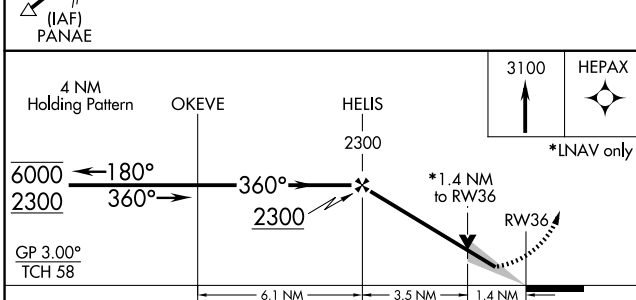
MISSED APPROACH: Climb to 3100 direct HEPAX and hold.

ATIS 126.35	CHAMPAIGN APP CON* 132.85 290.225	DECATUR TOWER* 118.9(CTAF) 0 291.775	GND CON 121.75 291.775	UNICOM 122.95
-----------------------	---	--	----------------------------------	-------------------------



EC-3, 16 APR 2026 to 14 MAY 2026

EC-3, 16 APR 2026 to 14 MAY 2026



CATEGORY	A	B	C	D
LPV DA	984-7/8		306 (400-7/8)	
LNAV/VNAV DA	1082-1 1/8		404 (400-1 1/8)	
LNAV MDA	1180-1	502 (500-1)	1180-1 3/8	502 (500-1 3/8)
CIRCLING	1180-1 498 (500-1)	1240-1 558 (600-1)	1360-2 678 (700-2)	1360-2 1/4 678 (700-2 1/4)