

MAYPORT, FLORIDA

# COPTER TACAN Z RWY 5

TACAN NRB Chan <b>51</b>	APCH CRS <b>055°</b>	Rwy Idg TDZE Arpt Elev <b>8001</b> <b>12</b> <b>15</b>	[USN] MAYPORT NS (ADM DAVID L. MC DONALD FLD) (KNRB)
-----------------------------	-------------------------	---	--

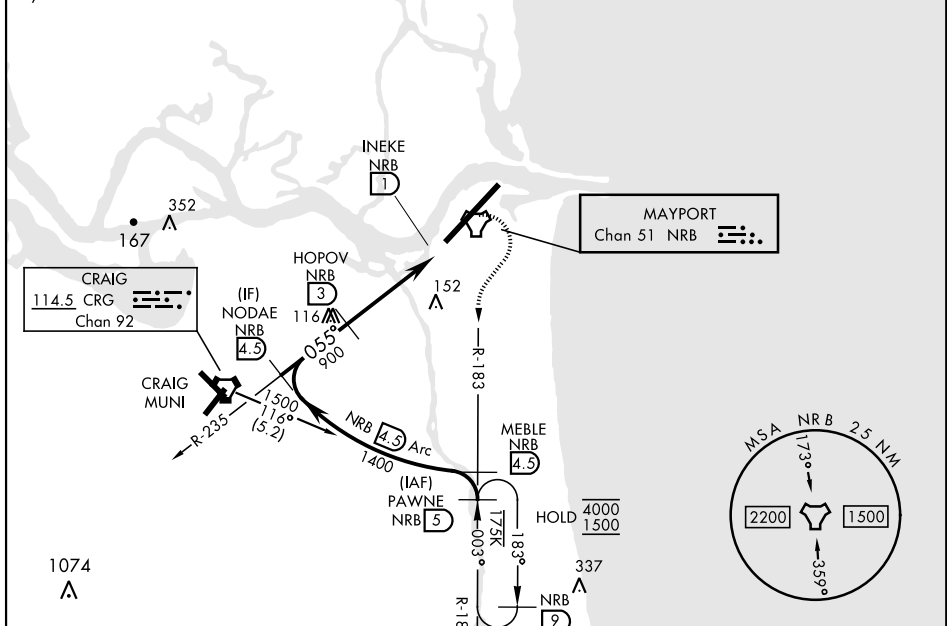
**MISSED APPROACH:** Climb to 500. Then climbing right turn to 1500 via NRB TACAN R-183 to PAWNE and hold.

ATIS ★ <b>236.775</b>	JACKSONVILLE APP CON <b>124.9 308.4</b>	TOWER ★ <b>118.75 239.30</b>	GND CON <b>126.5 233.7</b>	ASR/PAR
--------------------------	--	---------------------------------	-------------------------------	---------

CAUTION: When Rwy 23 VGSI inop, Circling to Rwy 23 NA at night.

Max airspeed 90 KIAS

Final approach course is 317° from rwy centerline at 3000' from threshold.



EMERG SAFE ALT 100 NM 2800

<p>PAWNE NRB 5</p> <p>MEBLE NRB 4.5</p> <p>NODAE NRB 4.5</p> <p>HOPOV NRB 3</p> <p>INEKE NRB 1.8</p> <p>NRB TACAN</p> <p>NRB INEKE 1</p> <p>NRB MEBLE 4.5</p> <p>NRB PAWNE 5</p>		ELEV 15	TDZE 12
<p>VGSI and descent angle not coincident (VGSI Angle 3.00/TCH 48).</p> <p>1500 → 003° → 1500</p> <p>1400 → 055° → 900</p> <p>3.30° TCH 48</p> <p>2 NM → 0.4</p>			
CATEGORY	COPTER		
S-5	440-½	428	(500-½)
<b>C</b> CIRCLING	560-1	545	(600-1)
		REIL Rwy 5-23 <b>0</b> HIRL Rwy 5-23	

MAYPORT, FLORIDA  
Amdt 5 05SEP24

30°23'N-81°25'W

MAYPORT NS (ADM DAVID L. MC DONALD FLD) (KNRB)

# COPTER TACAN Z RWY 5

SE-3, 16 APR 2026 to 14 MAY 2026

SE-3, 16 APR 2026 to 14 MAY 2026