

TACAN Y RWY 23

TACAN NRB Chan 51	APCH CRS 221°	Rwy Ldg TDZE 8001 15 15
-----------------------------	-------------------------	----------------------------------

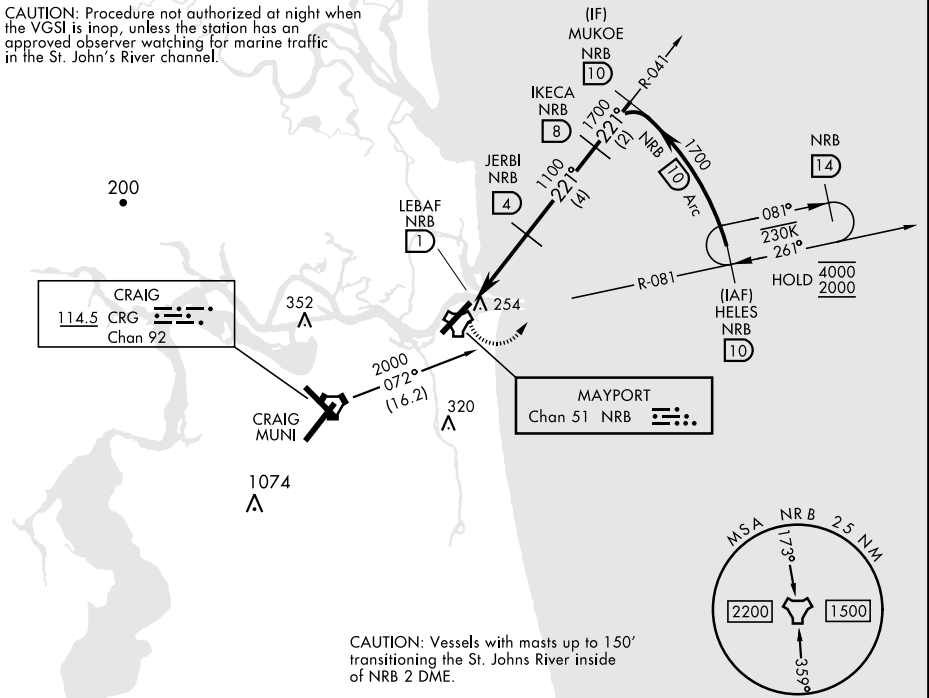
[USN] MAYPORT NS (ADM DAVID L. MC DONALD FLD) (KNRB)

▼ Visibility reduction by helicopters not authorized. MISSED APPROACH: Climbing left turn to 2000 via NRB TACAN R-081 to HELES and hold.

ATIS ★ 236.775	JACKSONVILLE APP CON 124.9 308.4	TOWER ★ 118.75 239.30	GND CON 126.5 233.7	ASR/PAR
--------------------------	--	---------------------------------	-------------------------------	---------

CRG feeder route requires turn in hold.

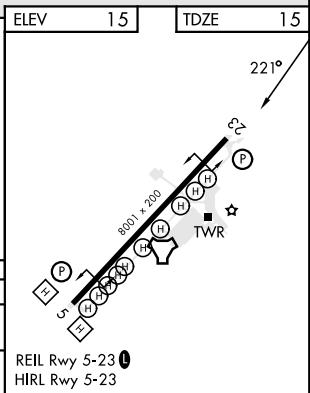
CAUTION: Procedure not authorized at night when the VGSI is inop, unless the station has an approved observer watching for marine traffic in the St. John's River channel.



CAUTION: Vessels with masts up to 150' transiting the St. Johns River inside of NRB 2 DME.

EMERG SAFE ALT 100 NM 2800

2000 NRB R-081	HELES NRB 10	JERBI NRB 4	IKECA NRB 8	MUKOKE NRB 10
LEBAF NRB 1		1100	1700	1700
3.01° TCH 48				
CATEGORY	A	B	C	D
S-23	520-1	505 (600-1)	520-1½ 505 (600-1½)	
CIRCLING	560-1	545 (600-1)	560-1½ 545 (600-1½)	620-2 605 (700-2)



TACAN Y RWY 23

SE-3, 16 APR 2026 to 14 MAY 2026

SE-3, 16 APR 2026 to 14 MAY 2026