

TACAN Y RWY 5

TACAN NRB Chan 51	APCH CRS 055°	Rwy Ldg TDZE Arpt Elev	8001 12 15
-----------------------------	-------------------------	------------------------------	---------------------------------------

[USN] MAYPORT NS (ADM DAVID L. MC DONALD FLD) (KNRB)

▽ MISSED APPROACH: Climb to 500. Then climbing right turn to 3000 via NRB TACAN R-081 to BENG and hold, continue climb in hold to 3000.

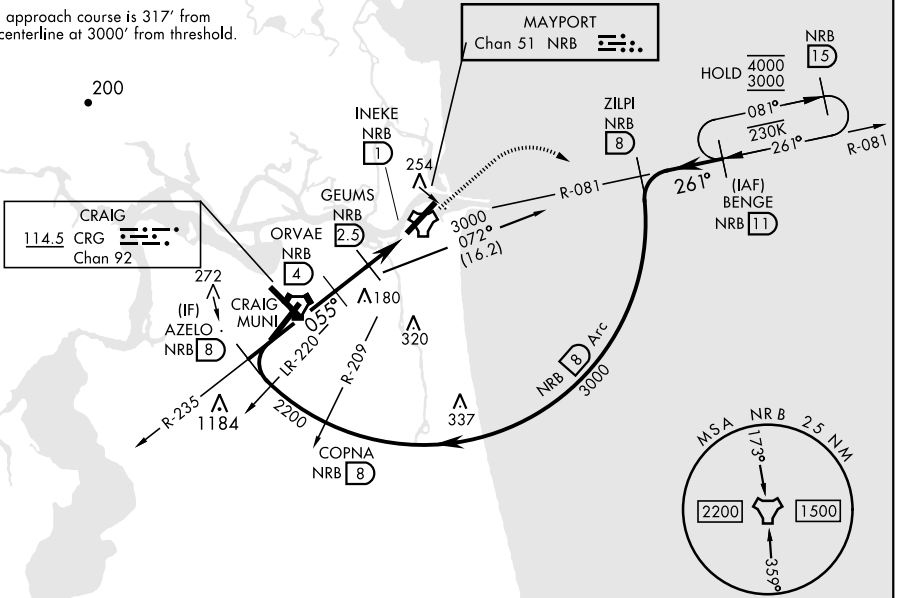
ATIS ★ 236.775	JACKSONVILLE APP CON 124.9 308.4	TOWER ★ 118.75 239.30	GND CON 126.5 233.7	ASR/PAR
--------------------------	--	---------------------------------	-------------------------------	---------

CAUTION: Circling not authorized to Rwy 23 at night when VGS1 inop on Rwy 23, unless the station has an approved observer watching for marine traffic in the St. John's River channel.

CAUTION: Intmed seg len 4 NM.

CRG feeder requires turn in hold.

Final approach course is 317' from rwy centerline at 3000' from threshold.



SE-3, 16 APR 2026 to 14 MAY 2026

SE-3, 16 APR 2026 to 14 MAY 2026

EMERG SAFE ALT 100 NM 2800

	ELEV 15	TDZE 12			
	500	3000	BENG R-081 NRB R-081 11		
	AZELO NRB 8	ORVAE NRB 4	GEUMS NRB 2.5	INEKE NRB 1	NRB TACAN
	2200	1200	660	3.16°	TCH 48
	055°	1.5 NM	1.5 NM	4	
CATEGORY	A	B	C	D	
S-5	440-1	428 (500-1)	440-1½ 428 (500-1½)		
CIRCLING	560-1	545 (600-1)	560-1½ 545 (600-1½)	620-2 605 (700-2)	

TACAN Y RWY 5