


WAAS CH <b>42630</b> <b>W16A</b>	APP CRS <b>167°</b>	Rwy Idg TDZE Apt Elev	<b>6005</b> <b>1252</b> <b>1252</b>
--	------------------------	-----------------------------	---

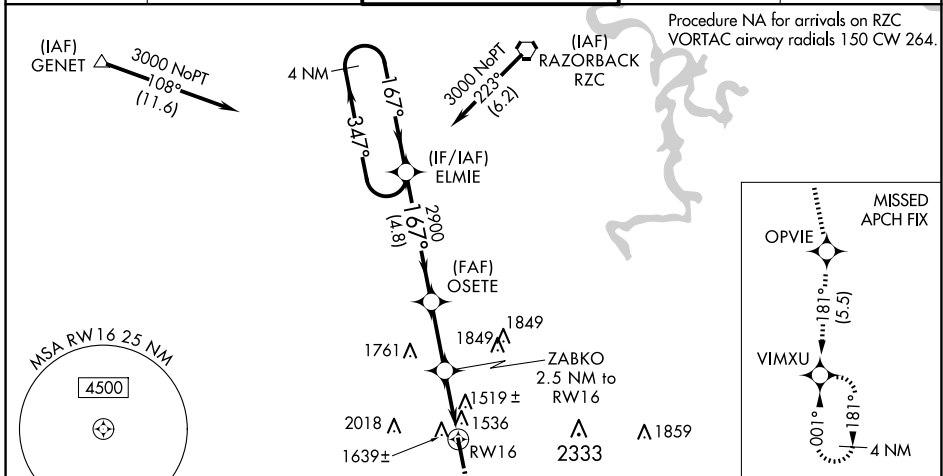
# RNAV (GPS) RWY 16

DRAKE FLD (FYV)

**⚠** Baro-VNAV NA when using Springdale altimeter setting. For uncompensated Baro-VNAV systems, LNAV/VNAV NA below -17°C (2°F) or above 54°C (130°F).  
**⚠** When VGSI inop, Straight-in/Circling Rwy 16 procedure NA at night. Circling NA east of Rwy 16-34. DME/DME RNP-0.3 NA. Visibility reduction by helicopters NA. When local altimeter setting not received, use Springdale altimeter setting and increase all DA and MDA 40 feet. Increase LPV all Cats visibility and LNAV Cats C and D visibility 1/8 mile and LNAV/VNAV all Cats visibility 3/8 mile. For inop ODALS, increase LPV all Cats visibility 1/8 mile, LNAV/VNAV all Cats visibility 3/8 mile and LNAV Cats C and D visibility 1/4 mile. For inop ODALS, when using Springdale altimeter setting, increase LPV all Cats visibility to 1 1/8 miles and LNAV Cats C and D visibility to 2 miles. Inop table does not apply when using Springdale altimeter setting to LNAV/VNAV all Cats and LNAV Cats A and B.

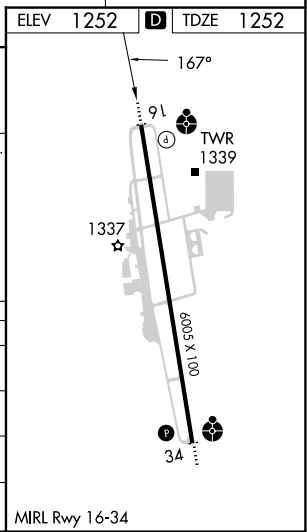
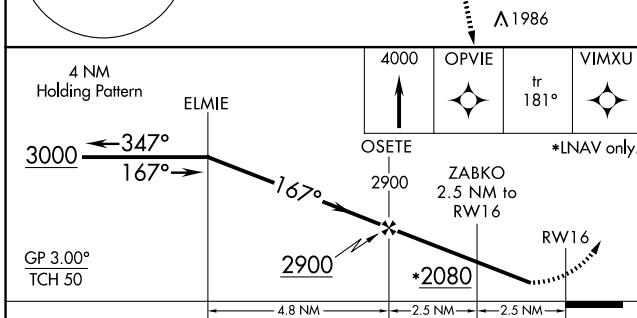
**ODALS**  
  
**MISSED APPROACH:**  
 Climb to 4000 direct OPVIE and on track 181° to VIMXU and hold.

ATIS <b>119.575</b>	RAZORBACK APP CON* <b>121.0 244.575</b>	DRAKE TOWER* <b>128.0 (CTAF) 371.9</b>	GND CON <b>121.8</b>	UNICOM <b>122.95</b>
------------------------	--	---	-------------------------	-------------------------



SC-1, 16 APR 2026 to 14 MAY 2026

SC-1, 16 APR 2026 to 14 MAY 2026



CATEGORY	A	B	C	D
LPV DA		1714-1 3/8	462 (500-1 3/8)	
LNAV/VNAV DA		1856-1 7/8	604 (700-1 1/8)	
LNAV MDA	1900-1	648 (700-1)	1900-1 3/4	648 (700-1 3/4)
<b>C</b> CIRCLING	2000-1	748 (800-1)	2320-3 1068 (1100-3)	2340-3 1088 (1100-3)