

WAAS CH <b>50330</b> <b>W34A</b>	APP CRS <b>347°</b>	Rwy Idg TDZE <b>1241</b> Apt Elev <b>1252</b>
--	------------------------	---

# RNAV (GPS) RWY 34

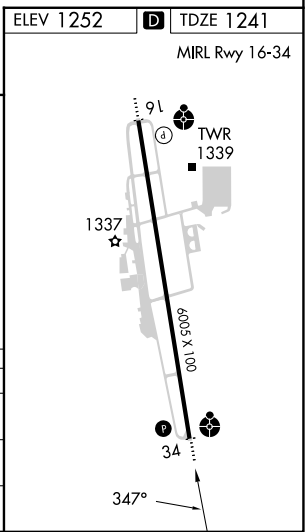
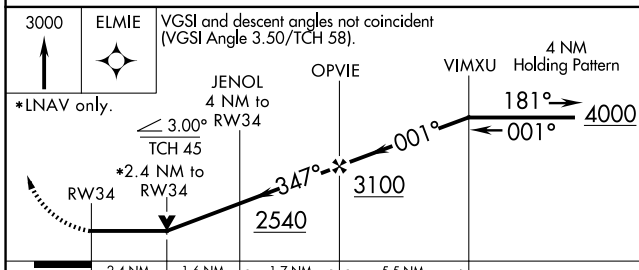
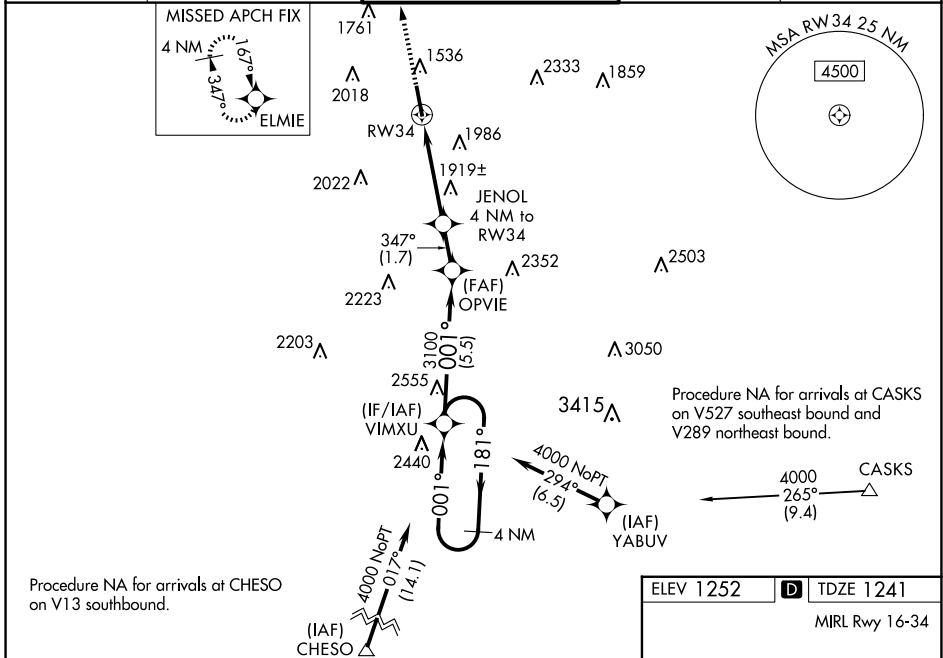
DRAKE FLD (FYV)

**⚠** Inop table does not apply to LP Cat A and LP/LNAV Cat C and D. For inop ODALS when using Springdale altimeter setting, increase LNAV Cat C and D visibility to 3 miles. Circling NA east of Rwy 16-34. DME/DME RNP-0.3 NA. Helicopter visibility reduction below 3/4 SM NA. VDP NA with Springdale altimeter setting. When local altimeter setting not received, use Springdale altimeter setting and increase all MDA 40 feet. Increase LNAV Cat B and Circling Cat B and C visibility 1/4 mile.

**ODALS**

**MISSED APPROACH:** Climb to 3000 direct ELMIE and hold.

ATIS <b>119.575</b>	RAZORBACK APP CON* <b>121.0 244.575</b>	DRAKE TOWER* <b>128.0(CTAF) 371.9</b>	GND CON <b>121.8</b>	UNICOM <b>122.95</b>
------------------------	--	--	-------------------------	-------------------------



CATEGORY	A	B	C	D
LP MDA	2120-1	879 (900-1)	2120-2½	879 (900-2½)
LNAV MDA	2180-1	939 (1000-1)	2180-2½	939 (1000-2½)
<b>C</b> CIRCLING	2180-1¼	928 (1000-1¼)	2320-3 1068 (1100-3)	2340-3 1088 (1100-3)

SC-1, 16 APR 2026 to 14 MAY 2026

SC-1, 16 APR 2026 to 14 MAY 2026