

PENSACOLA, FLORIDA

HI-TACAN Z RWY 1

TACAN NPA Chan 119	APCH CRS 015°	Rwy Idg 7136
		TDZE 28
		Arpt Elev 28

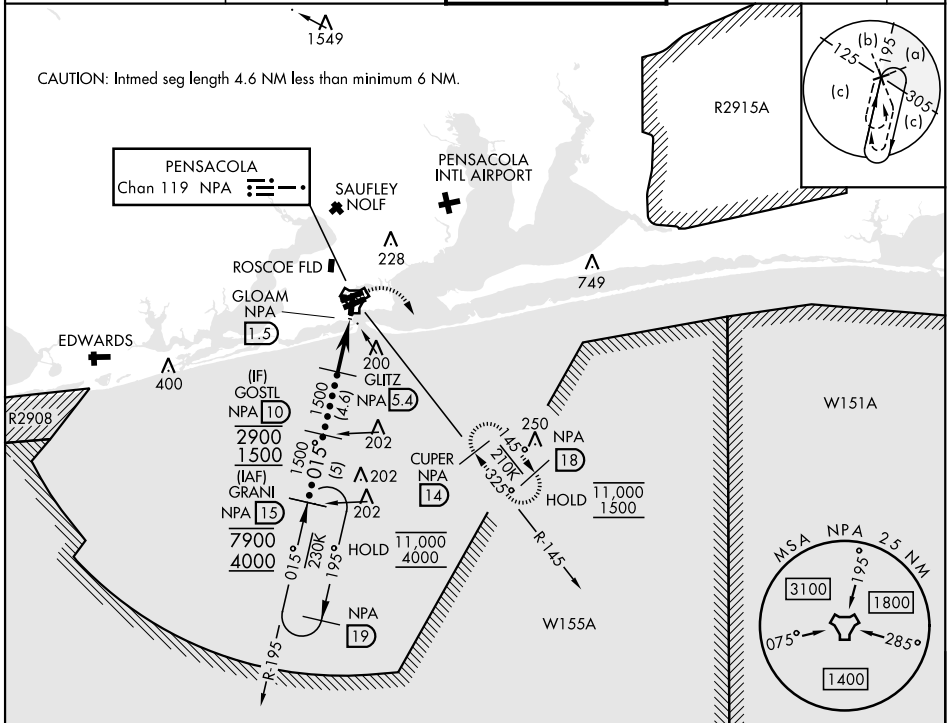
[USN] PENSACOLA NAS (FORREST SHERMAN FLD) (KNPA)

RADAR required

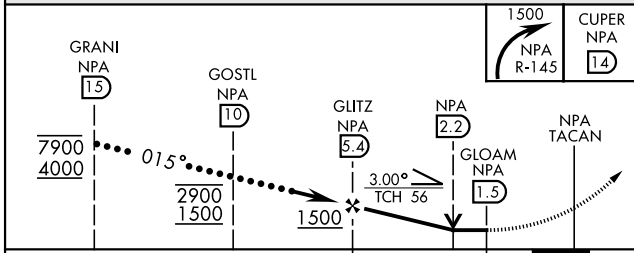
MISSED APPROACH: Climbing right turn to 1500 via NPA TACAN R-145 to CUPER and hold.

ATIS 124.35 266.8	PENSACOLA APP CON 120.65 270.8	SHERMAN TOWER 120.7 340.2	GND CON 121.7 336.4	ASR/ PAR
----------------------	-----------------------------------	------------------------------	------------------------	-------------

CAUTION: Intmed seg length 4.6 NM less than minimum 6 NM.

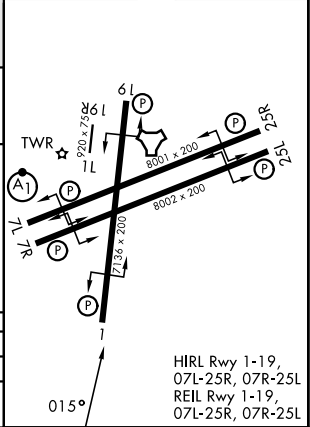


EMERG SAFE ALT 100 NM 3100



CATEGORY	C	D	E
S-1	460-1¼	432	(500-1¼)
CIRCLING	540-1½ 512 (600-1½)	600-2 572 (600-2)	640-2¼ 612 (700-2¼)

ELEV	28	TDZE	28
------	----	------	----



HIRL Rwy 1-19, 07L-25R, 07R-25L
REIL Rwy 1-19, 07L-25R, 07R-25L

PENSACOLA, FLORIDA

30°21'N-87°19'W

PENSACOLA NAS (FORREST SHERMAN FLD) (KNPA)

Amdt 1 12JUN25

HI-TACAN Z RWY 1

SE-3, 16 APR 2026 to 14 MAY 2026

SE-3, 16 APR 2026 to 14 MAY 2026