

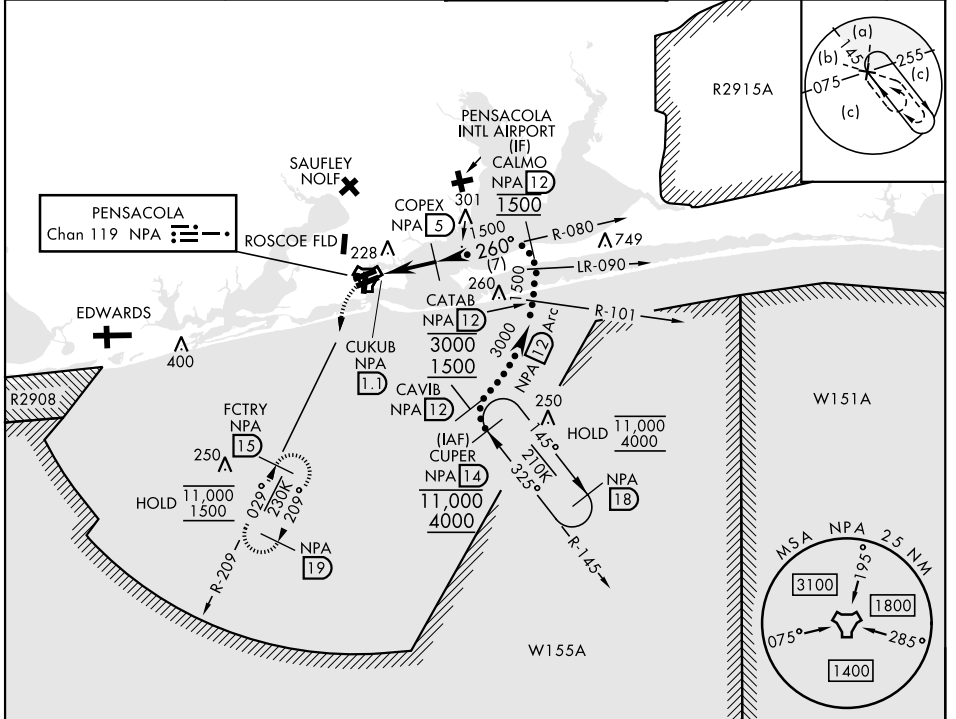
HI-TACAN Z RWY 25R

TACAN NPA Chan 119	APCH CRS 260°	Rwy Idg 8001	TDZE 21	Arpt Elev 28
-----------------------	------------------	-----------------	------------	-----------------

[USN] PENSACOLA NAS (FORREST SHERMAN FLD) (KNPA)

RADAR required ▼	MISSED APPROACH: Climbing left turn to 1500 via NPA TACAN R-209 to FCTRY and hold.
---------------------	--

ATIS 124.35 266.8	PENSACOLA APP CON 120.65 270.8	SHERMAN TOWER 120.7 340.2	GND CON 121.7 336.4	ASR/ PAR
----------------------	-----------------------------------	------------------------------	------------------------	-------------

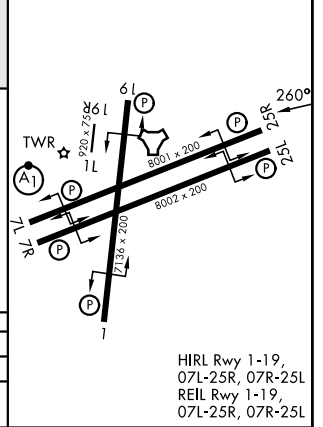
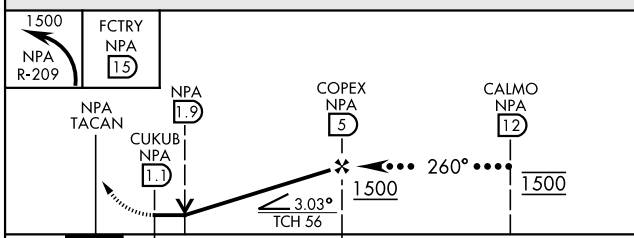


SE-3, 16 APR 2026 to 14 MAY 2026

SE-3, 16 APR 2026 to 14 MAY 2026

ELEV	28	TDZE	21
------	----	------	----

EMERG SAFE ALT 100 NM 3100



HIRL Rwy 1-19, 07L-25R, 07R-25L
REIL Rwy 1-19, 07L-25R, 07R-25L

HI-TACAN Z RWY 25R