

PENSACOLA, FLORIDA

ILS or RNAV (GPS) Y RWY 7L

LOC/DME I-NPA 109.3 Chan 30	APCH CRS 071°	Rwy Ldg TDZE Arprt Elev 8001 23 28
---	-------------------------	--

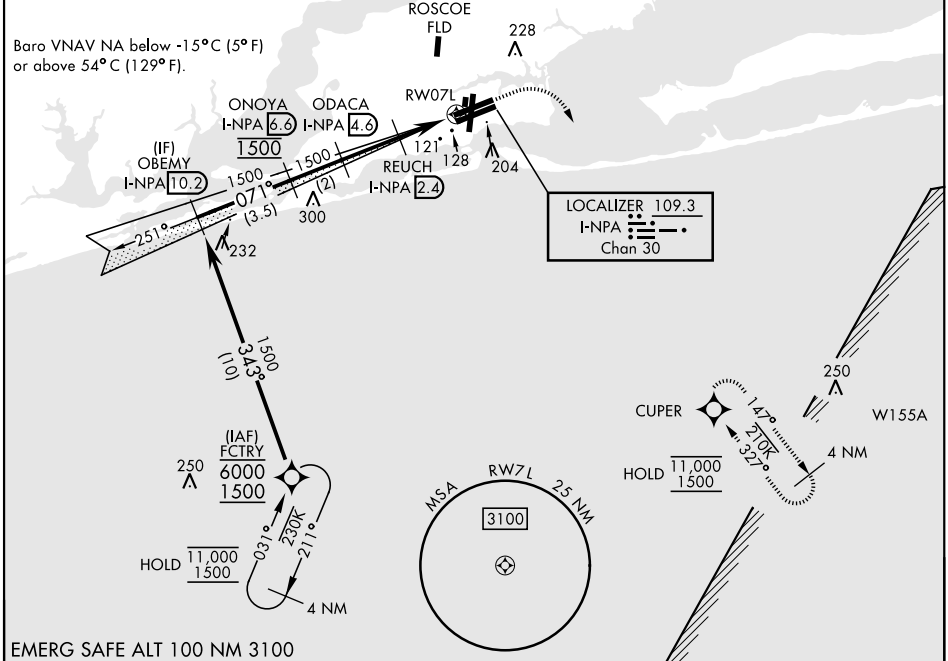
[USN]

PENSACOLA NAS (FORREST SHERMAN FLD) (KNPA)

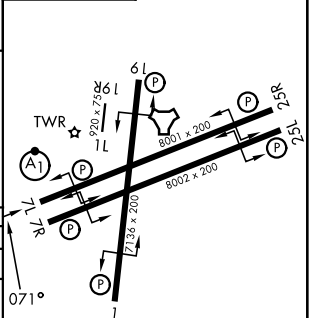
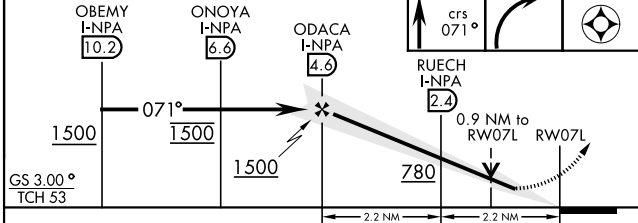
RNP APCH - GPS	ALSF-1 	MISSED APPROACH: Climb to 600, then climbing right turn to 1500 direct CUPER and hold.
RADAR required		
<p>▼ * When ALS inop, increase vis to 3/4 mile.</p>		

ATIS 124.35 266.8	PENSACOLA APP CON 120.65 270.8	SHERMAN TOWER 120.7 340.2	GND CON 121.7 336.4	ASR/PAR
-----------------------------	--	-------------------------------------	-------------------------------	---------

**When ALS inop, increase CAT ABCD vis to 3/4 mile, CAT E vis to 1 mile.
*** When ALS inop, increase vis to 1 mile.



600	1500	CUPER	ELEV 28	TDZE 23
-----	------	-------	---------	---------



CATEGORY	A	B	C	D	E
S-ILS 7L *	223-1/2		200	(200-1/2)	
LNAV/VNAV DA**	274-1/2	251	(300-1/2)	283-1/2	377-5/8
				260 (300-1/2)	354 (400-3/8)
LNAV MDA***	380-1/2 357 (400-1/2)		380-5/8 357 (400-5/8)		
			540-1 1/2	600-2	640-2 1/4
CIRCLING	520-1	492 (500-1)	512 (600-1 1/2)	572 (600-2)	612 (700-2 1/4)

HIRL Rwy 1-19, 07L-25R, 07R-25L
REIL Rwy 1-19, 07L-25R, 07R-25L

PENSACOLA, FLORIDA
Amdt 6 10JUL25

30°21'N-87°19'W

PENSACOLA NAS (FORREST SHERMAN FLD) (KNPA)

ILS or RNAV (GPS) Y RWY 7L

SE-3, 16 APR 2026 to 14 MAY 2026

SE-3, 16 APR 2026 to 14 MAY 2026