

PENSACOLA, FLORIDA

ILS Z or LOC Z RWY 7L

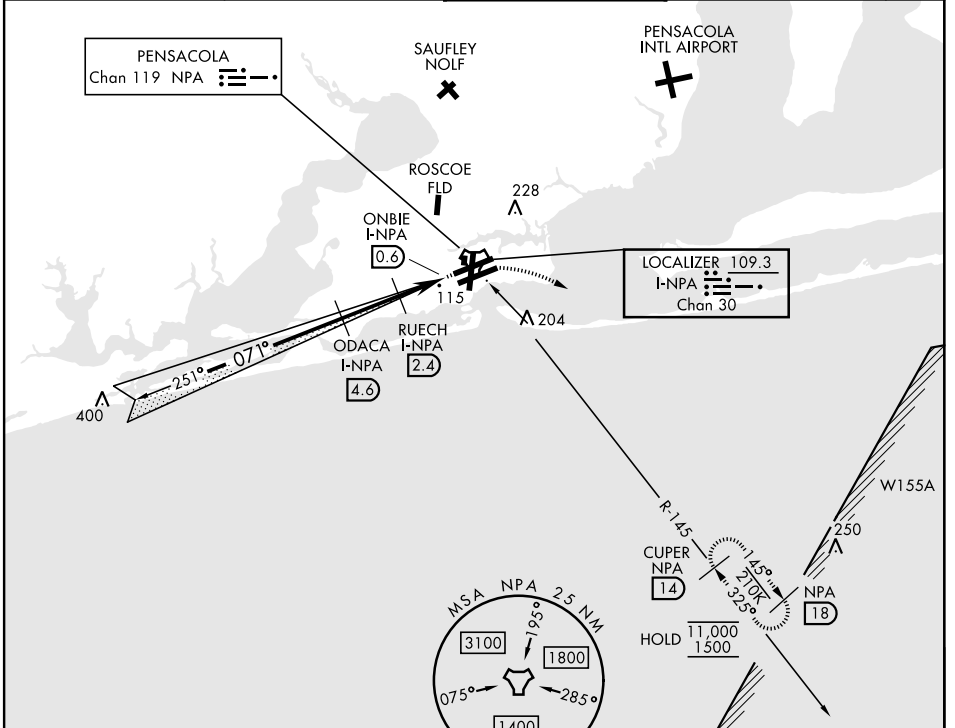
LOC/DME I-NPA 109.3 Chan 30	APCH CRS 071°	Rwy Idg TDZE Arprt Elev 8001 23 28
---	-------------------------	--

[USN] PENSACOLA NAS (FORREST SHERMAN FLD) (KNPA)

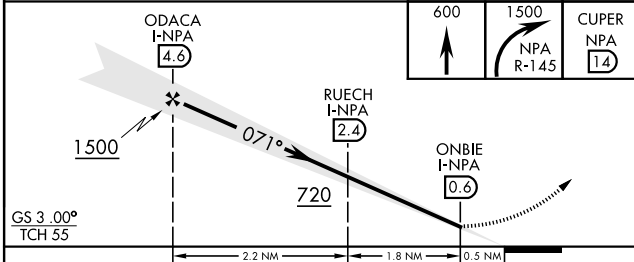
RADAR or TACAN, and DME required. **ALS F-1** MISSED APPROACH: Climb to 600. Then climbing right turn to 1500 via NPA R-145 to CUPER and hold. Aircraft not TACAN equipped: Climb to 600, then climbing right turn to 1500 heading 190°. Expect RADAR vectors.

▼ *When ALS inop, increase vis to ¾ mile.
**When ALS inop, increase vis to 1 mile.

ATIS 124.35 266.8	PENSACOLA APP CON 120.65 270.8	SHERMAN TOWER 120.7 340.2	GND CON 121.7 336.4	ASR/ PAR
-----------------------------	--	-------------------------------------	-------------------------------	-------------

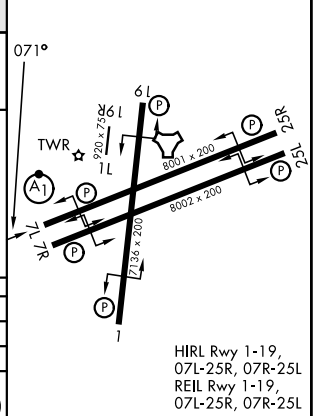


EMERG SAFE ALT 100 NM 3100



ELEV	28	TDZE	23
------	----	------	----

CATEGORY	A	B	C	D	E
S-ILS 7L*	223-½		200	(200-½)	
S-LOC 7L**	380-½	357 (400-½)	380-¾	357	(400-¾)
CIRCLING	520-1	492 (500-1)	540-1½ 512 (600-½)	600-2 572 (600-2)	640-2¼ 612 (700-2¼)



PENSACOLA, FLORIDA

30°21'N-87°19'W

PENSACOLA NAS (FORREST SHERMAN FLD) (KNPA)

Amtd 6 19FEB26

ILS Z or LOC Z RWY 7L

SE-3, 16 APR 2026 to 14 MAY 2026

SE-3, 16 APR 2026 to 14 MAY 2026