

PENSACOLA, FLORIDA

# RNAV (GPS) RWY 1

(USN)

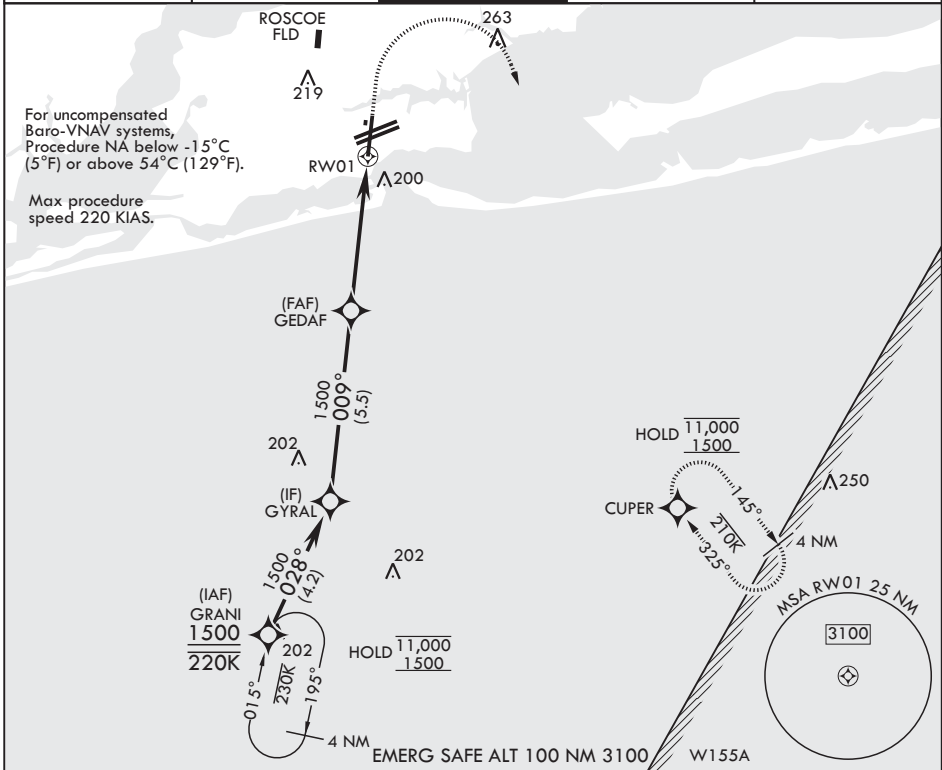
PENSACOLA NAS (FORREST SHERMAN FLD) (KNPA)

APCH CRS	Rwy Idg	7136
009°	TDZE	28
	Arprt Elev	28

RNP APCH - GPS  
 RADAR required

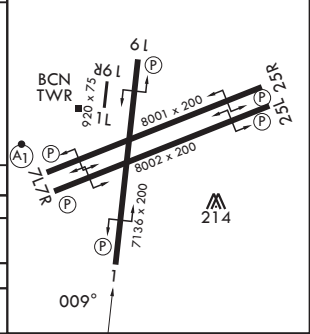
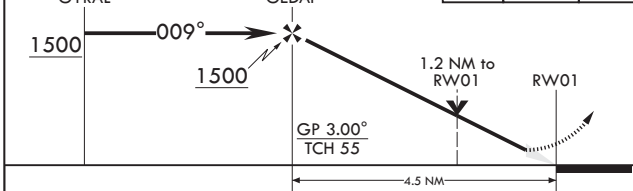
MISSED APPROACH: Climb to 800 then climbing right turn to 1500 direct CUPER and hold.

ATIS 124.35 266.8	APP CON 120.65 270.8	SHERMAN TOWER 120.7 340.2	SHERMAN GND CON 121.7 336.4	ASR/PAR
----------------------	-------------------------	------------------------------	--------------------------------	---------



800	1500	CUPER	ELEV 28	TDZE 28
-----	------	-------	---------	---------

HIRL Rwy 1-19, 7L-25R, and 7R-25L  
 REIL Rwy 1, 7L, 7R, 19, 25L, and 25R



CATEGORY	A	B	C	D
LNAV/VNAV DA	331-7/8 303 (400-7/8)	342-7/8 314 (400-7/8)	350-1 322 (400-1)	361-1 333 (400-1)
LNAV MDA	460-1 432 (500-1)	460-1 432 (500-1)	540-1 512 (600-1 1/2)	600-2 572 (600-2)
CIRCLING	520-1 492 (500-1)	540-1 512 (600-1 1/2)	600-2 572 (600-2)	

PENSACOLA, FLORIDA

30°21'N - 87°19'W PENSACOLA NAS (FORREST SHERMAN FLD) (KNPA)

Amdt 5 12JUN25

# RNAV (GPS) RWY 1

SE-3, 16 APR 2026 to 14 MAY 2026

SE-3, 16 APR 2026 to 14 MAY 2026