

PENSACOLA, FLORIDA

RNAV (GPS) RWY 25L

(USN)

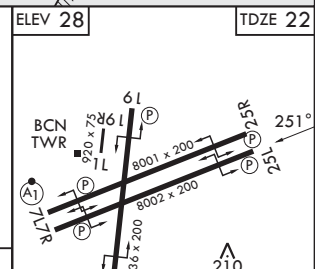
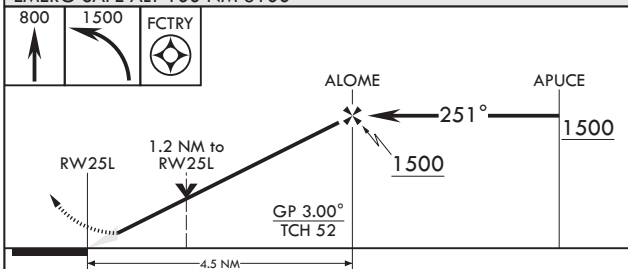
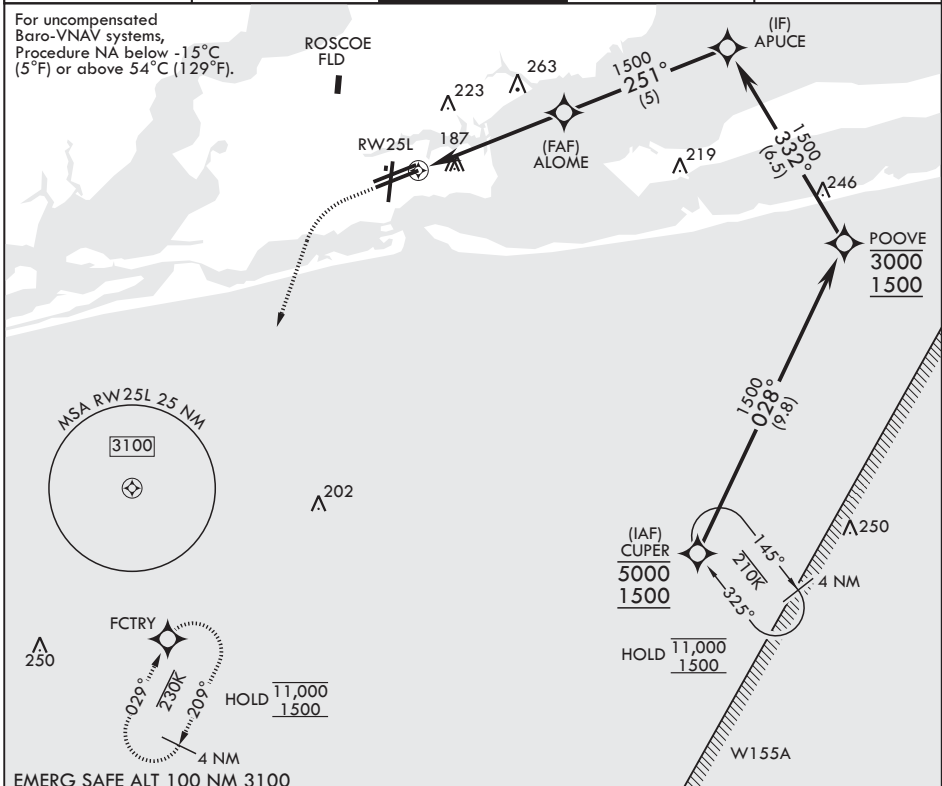
PENSACOLA NAS (FORREST SHERMAN FLD) (KNPA)

APCH CRS	Rwy Idg	8002
251°	TDZE	22
	Arprt Elev	28

RNP APCH - GPS
 RADAR required

MISSED APPROACH: Climb to 800 then climbing left turn to 1500 direct FCTRY and hold.

ATIS 124.35 266.8	APP CON 120.65 270.8	SHERMAN TOWER 120.7 340.2	SHERMAN GND CON 121.7 336.4	ASR/PAR
----------------------	-------------------------	------------------------------	--------------------------------	---------



CATEGORY	A	B	C	D
LNAV/VNAV DA	460-1¼	438	(500-1¼)	
LNAV MDA	460-1	438 (500-1)	460-1¼	438 (500-1¼)
CIRCLING	520-1	492 (500-1)	540-1½ 512 (600-1½)	600-2 572 (600-2)

HIRL Rwys 1-19, 7L-25R, and 7R-25L
 REIL Rwys 1, 7L, 7R, 19, 25L, and 25R

PENSACOLA, FLORIDA

30°21'N - 87°19'W PENSACOLA NAS (FORREST SHERMAN FLD) (KNPA)

Amdt 4 12JUN25

RNAV (GPS) RWY 25L

SE-3, 16 APR 2026 to 14 MAY 2026

SE-3, 16 APR 2026 to 14 MAY 2026