

PENSACOLA, FLORIDA

# RNAV (GPS) RWY 25R

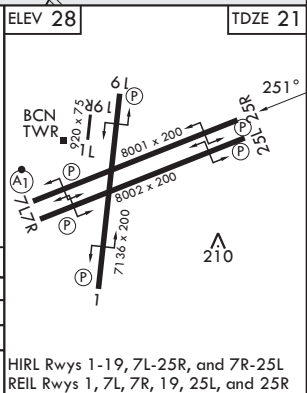
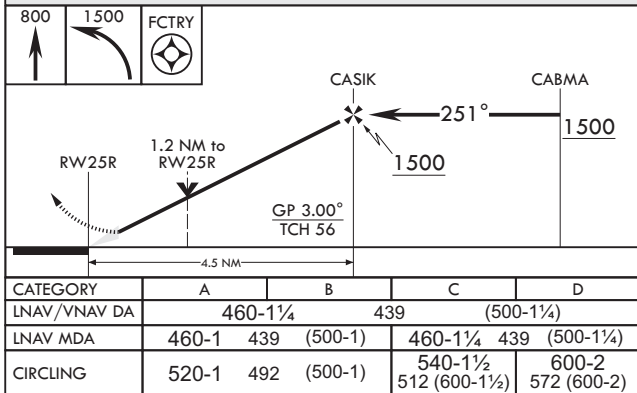
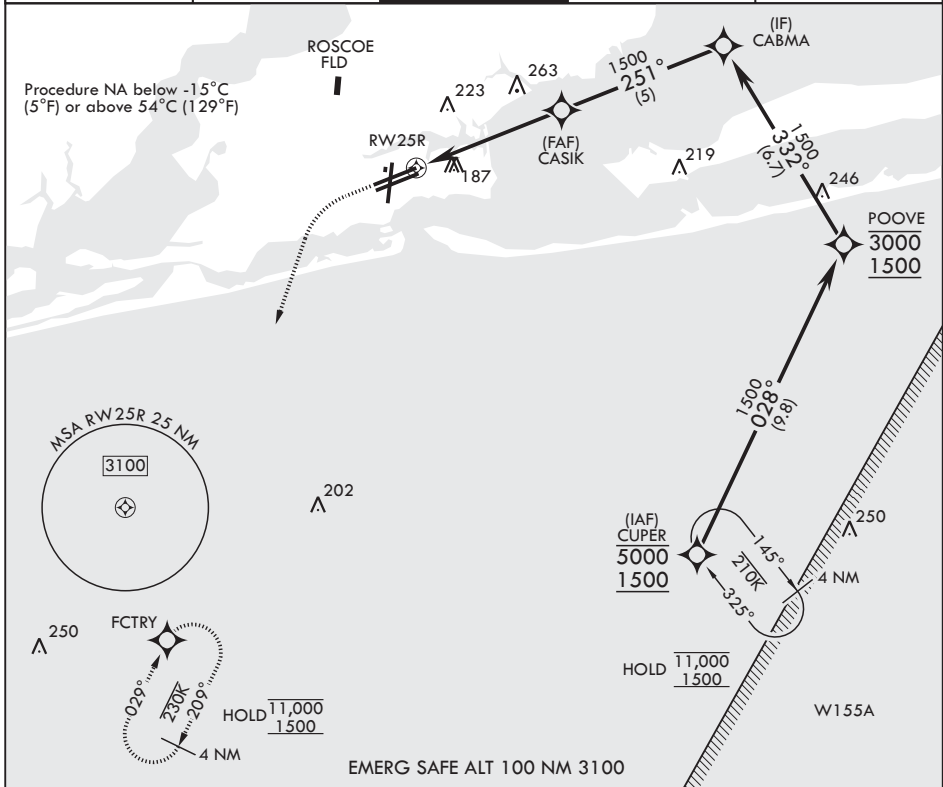
(USN)

PENSACOLA NAS (FORREST SHERMAN FLD) (KNPA)

APCH CRS	Rwy Idg	8001
251°	TDZE	21
	Arprt Elev	28

RNP APCH - GPS	MISSED APPROACH: Climb to 800 then climbing left turn to 1500 direct FCTRY and hold.
RADAR required	

ATIS 124.35 266.8	APP CON 120.65 270.8	SHERMAN TOWER 120.7 340.2	SHERMAN GND CON 121.7 336.4	ASR/PAR
----------------------	-------------------------	------------------------------	--------------------------------	---------



PENSACOLA, FLORIDA

30°21'N - 87°19'W PENSACOLA NAS (FORREST SHERMAN FLD) (KNPA)

Amdt 8 12JUN25

# RNAV (GPS) RWY 25R

SE-3, 16 APR 2026 to 14 MAY 2026

SE-3, 16 APR 2026 to 14 MAY 2026