

# TACAN Y RWY 25R

TACAN NPA Chan 119	APCH CRS 260°	Rwy ldg TDZE 21	8001 Arprt Elev 28
-----------------------	------------------	--------------------	--------------------------

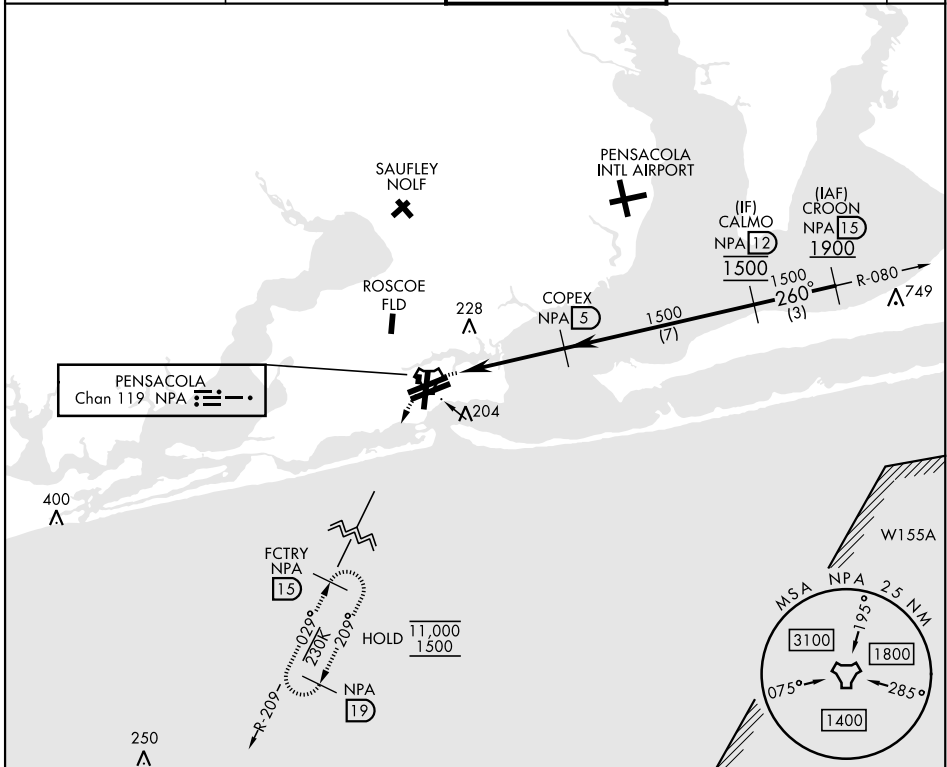
[USN]

PENSACOLA NAS (FORREST SHERMAN FLD) (KNPA)

RADAR required

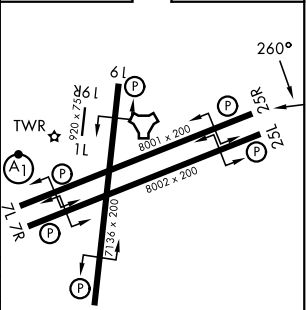
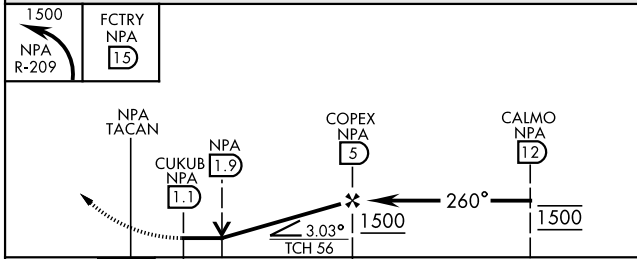
MISSED APPROACH: Climbing left turn to 1500 via NPA TACAN R-209 to FCTRY and hold.

ATIS 124.35 266.8	PENSACOLA APP CON 120.65 270.8	SHERMAN TOWER 120.7 340.2	GND CON 121.7 336.4	ASR/ PAR
----------------------	-----------------------------------	------------------------------	------------------------	-------------



EMERG SAFE ALT 100 NM 3100

ELEV	28	TDZE	21
------	----	------	----



CATEGORY	A	B	C	D	E
S-25R	500-1 479 (500-1)		500-1 <sup>3</sup> / <sub>8</sub> 479 (500-1 <sup>3</sup> / <sub>8</sub> )		
CIRCLING	520-1 492 (500-1)		540-1 <sup>1</sup> / <sub>2</sub> 512 (600-1 <sup>1</sup> / <sub>2</sub> )	600-2 572 (600-2)	640-2 <sup>1</sup> / <sub>4</sub> 612 (700-2 <sup>1</sup> / <sub>4</sub> )

HIRL Rwy 1-19,  
07L-25R, 07R-25L  
REIL Rwy 1-19,  
07L-25R, 07R-25L

# TACAN Y RWY 25R

SE-3, 16 APR 2026 to 14 MAY 2026

SE-3, 16 APR 2026 to 14 MAY 2026