

PENSACOLA, FLORIDA

TACAN Y RWY 7L

TACAN NPA Chan 119	APCH CRS 064°	Rwy ldg TDZE Arprt Elev	8001 23 28
-----------------------	------------------	-------------------------------	------------------

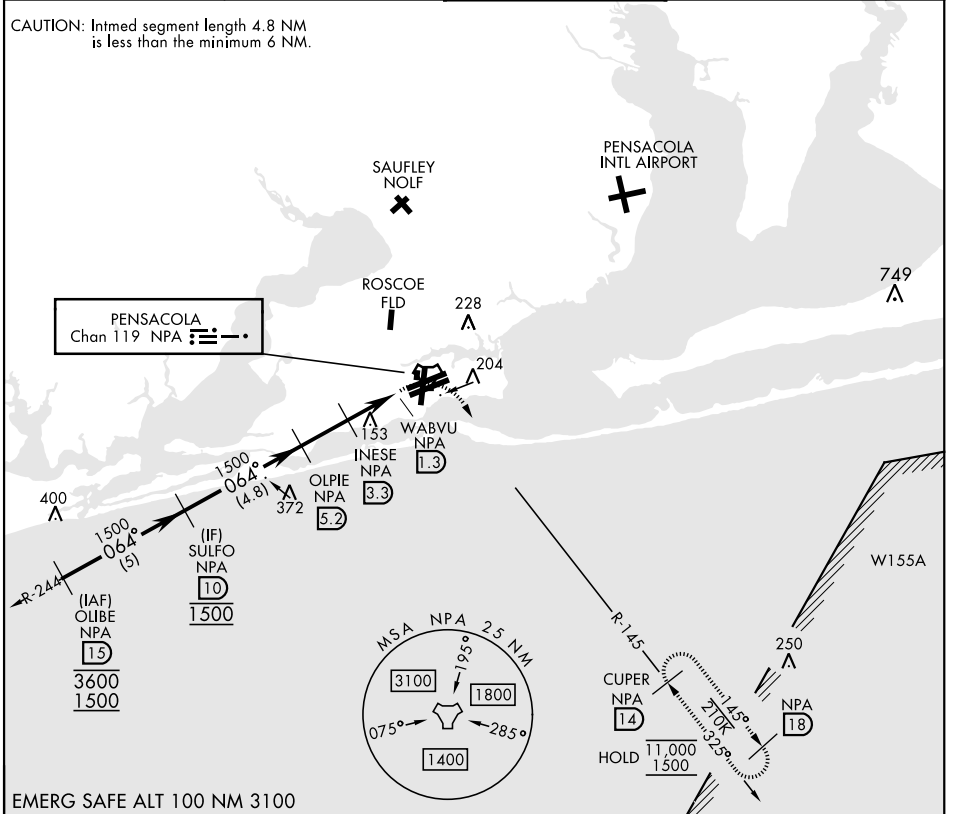
[USN] PENSACOLA NAS (FORREST SHERMAN FLD) (KNPA)

RADAR required
 ▼ * When ALS inop, increase CAT AB vis to 1 mile, CAT CDE vis to 1 1/8 miles.



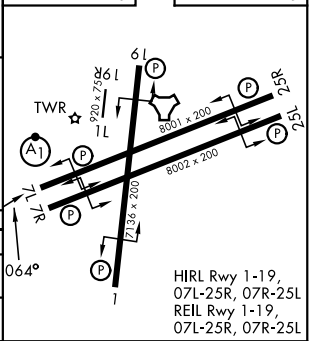
MISSED APPROACH: Climbing right turn to 1500 via NPA TACAN R-145 to CUPER and hold.

ATIS 124.35 266.8	PENSACOLA APP CON 120.65 270.8	SHERMAN TOWER 120.7 340.2	GND CON 121.7 336.4	ASR/ PAR
----------------------	-----------------------------------	------------------------------	------------------------	-------------



EMERG SAFE ALT 100 NM 3100

	SULFO NPA 10		OLPIE NPA 5.2		INESE NPA 3.3		WABVU NPA 1.3		CUPER NPA 14	
	1500		1500		880		8001 x 200		8092 x 200	
	064°		3.00° TCH 56		1.9 NM		2 NM		0.5	
CATEGORY	A	B	C	D	E					
S-7L*	440-1/2	417 (500-1/2)	440-3/4	417 (500-3/4)						
CIRCLING	520-1	492 (500-1)	540-1 1/2	600-2	640-2 1/4					
			512 (600-1/2)	572 (600-2)	612 (700-2/4)					



PENSACOLA, FLORIDA 30° 21' N-87° 19' W PENSACOLA NAS (FORREST SHERMAN FLD) (KNPA)

Amtd 1 12JUN25

TACAN Y RWY 7L

SE-3, 16 APR 2026 to 14 MAY 2026

SE-3, 16 APR 2026 to 14 MAY 2026