

PENSACOLA, FLORIDA

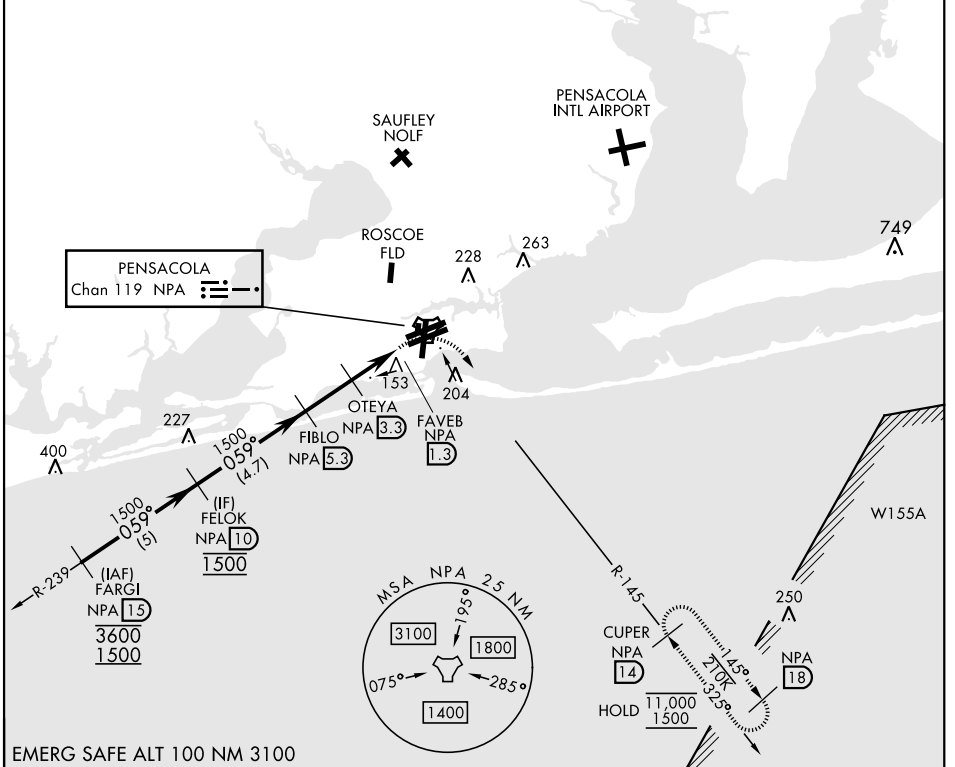
TACAN Y RWY 7R

TACAN NPA Chan 119	APCH CRS 059°	Rwy Idg TDZE Arprt Elev 8002 25 28	[USN]	PENSACOLA NAS (FORREST SHERMAN FLD) (KNPA)
-----------------------	------------------	---	-------	--

RADAR required	MISSED APPROACH: Climbing right turn to 1500 via NPA TACAN R-145 to CUPER and hold.
----------------	---

ATIS 124.35 266.8	PENSACOLA APP CON 120.65 270.8	SHERMAN TOWER 120.7 340.2	GND CON 121.7 336.4	ASR/ PAR
----------------------	-----------------------------------	------------------------------	------------------------	-------------

CAUTION: Intmed segment length 4.7 NM is less than the minimum 6 NM.



EMERG SAFE ALT 100 NM 3100

	1500		CUPER NPA 14		ELEV 28	TDZE 25
	FELOK NPA 10	FIBLO NPA 5.3	OTEYA NPA 3.3	FAVEB NPA 1.3	NPA TACAN	
	1500		860			
CATEGORY	A	B	C	D	E	
S-7R	440-1	415 (500-1)	440-1½	415 (500-1½)		
CIRCLING	520-1	492 (500-1)	540-1½ 512 (600-1½)	600-2 572 (600-2)	640-2¼ 612 (700-2¼)	

PENSACOLA, FLORIDA

30° 21' N-87° 19' W

PENSACOLA NAS (FORREST SHERMAN FLD) (KNPA)

Amdt 1 12JUN25

TACAN Y RWY 7R

SE-3, 16 APR 2026 to 14 MAY 2026

SE-3, 16 APR 2026 to 14 MAY 2026