

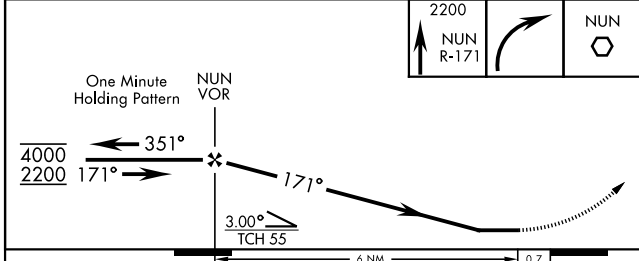
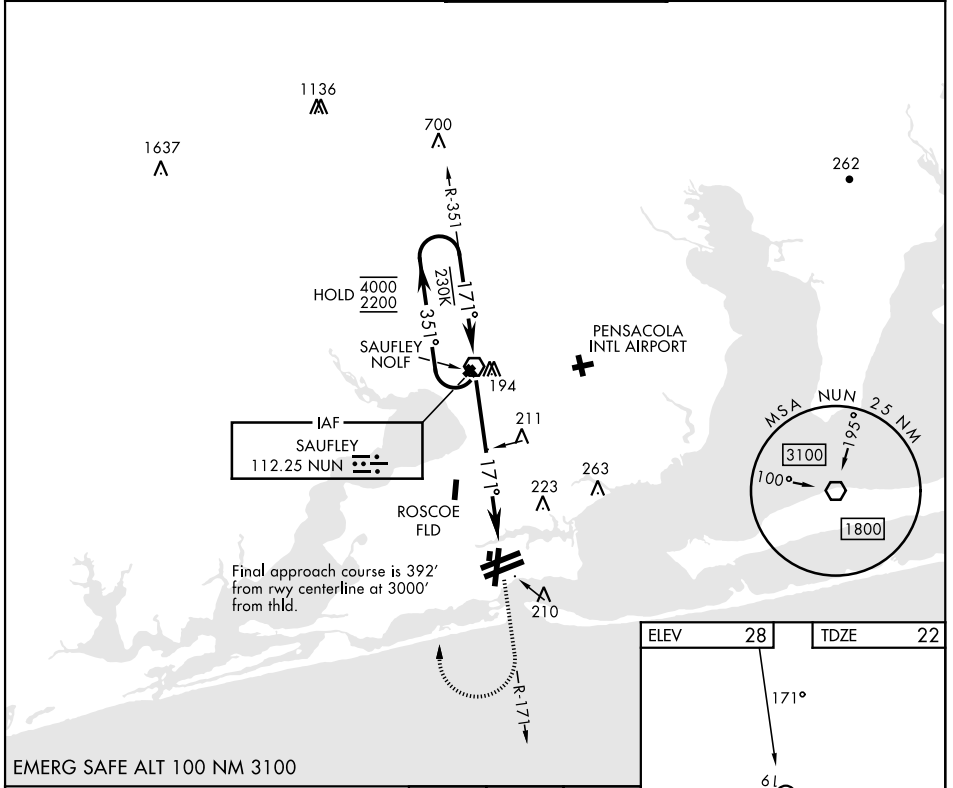
VOR Y RWY 19

VOR NUN 112.25	APCH CRS 171°	Rwy Ldg TDZE Arpt Elev 7136 22 28
--------------------------	-------------------------	---

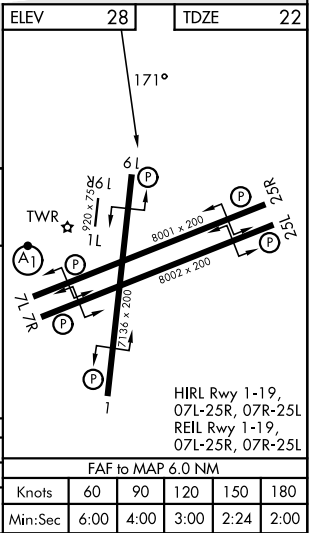
[USN] PENSACOLA NAS (FORREST SHERMAN FLD) (KNPA)

RADAR required		MISSED APPROACH: Climb to 2200 via NUN R-171. Then turn right direct NUN VOR and hold. Remain within 15 NM of NUN.		
----------------	--	--	--	--

ATIS 124.35 266.8	PENSACOLA APP CON 120.65 270.8	SHERMAN TOWER 120.7 340.2	GND CON 121.7 336.4	ASR/ PAR
-----------------------------	--	-------------------------------------	-------------------------------	-------------



CATEGORY	A	B	C	D
S-19	540-1	518 (600-1)	540-1 $\frac{3}{8}$	518 (600-1 $\frac{3}{8}$)
CIRCLING	540-1	512 (600-1)	540-1 $\frac{1}{2}$	572 (600-2)



SE-3, 16 APR 2026 to 14 MAY 2026

SE-3, 16 APR 2026 to 14 MAY 2026