

GARLAND SIX DEPARTURE

SC-2, 16 APR 2026 to 14 MAY 2026

TOP ALTITUDE: ASSIGNED BY ATC

LONE STAR DEP CON
125.2 343.65
ATIS
126.35
CINC DEL
118.625
GND CON
119.475
EXECUTIVE TOWER *
127.25 (CTAF)

TAKEOFF MINIMUMS

Rwys 13, 31, 35: Standard.
Rwy 17: 400-2 3/4 or standard with minimum
climb of 220'/NM to 1200.

NOTE: SOLDO Transition: ATC assigned.

RADAR and DME required.

TEXARKANA
116.3 TKX
Chan 110

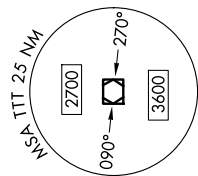
PARIS
113.6 PRX
Chan 83

BONHAM
114.6 BYP
Chan 93

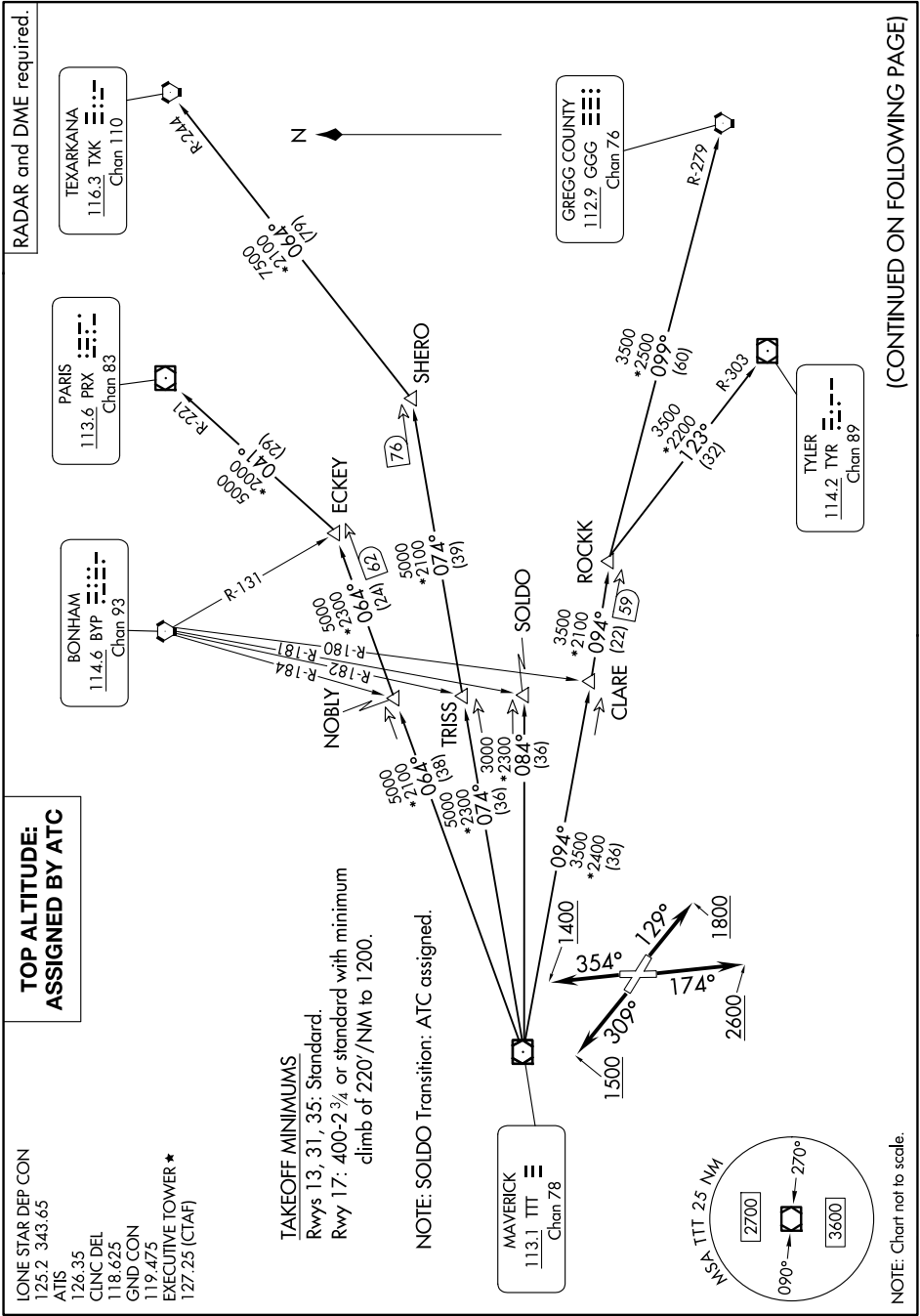
GREGG COUNTY
112.9 GGG
Chan 76

TYLER
114.2 TYR
Chan 89

MAVERICK
113.1 TTT
Chan 78



NOTE: Chart not to scale.



(CONTINUED ON FOLLOWING PAGE)

SC-2, 16 APR 2026 to 14 MAY 2026