

WAAS CH 82737 W36A	APP CRS 357°	Rwy Idg TDZE Apt Elev	5301 934 934
--	------------------------	-----------------------------	---

RNAV (GPS) RWY 36

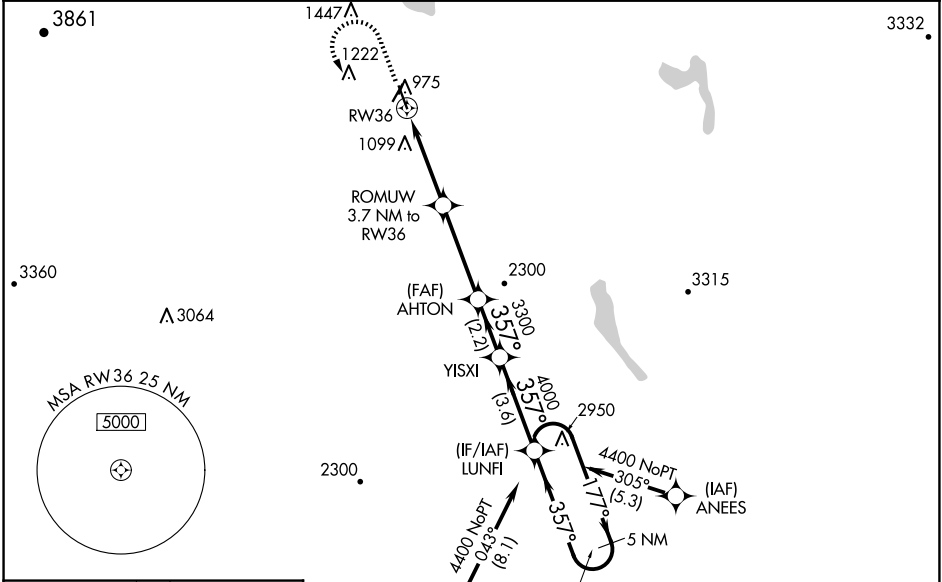
NORTHEAST KINGDOM INTL (EFK)

RNP APCH - GPS.

⚠ Circling to Rwy 5 and 23 NA at night. Rwy 36 helicopter visibility reduction below $\frac{3}{4}$ SM NA. For uncompensated Baro-VNAV systems, LNAV/VNAV NA below -16°C or above 54°C .
⚠ When local altimeter setting not received, use MVL altimeter setting and increase LPV DA to 1275 feet and all visibilities $\frac{1}{4}$ SM; increase LNAV/VNAV DA to 1557 feet and all visibilities $\frac{1}{4}$ SM; increase all MDAs 100 feet and LNAV visibility Cat C $\frac{3}{8}$ SM. Baro-VNAV and VDP NA when using MVL altimeter setting.

MISSED APPROACH:
Climb to 2300 then climbing left turn to 4400 direct LUNFI and hold.

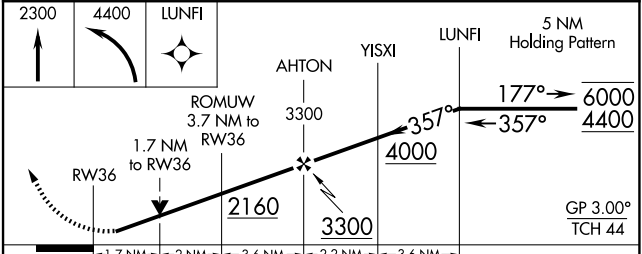
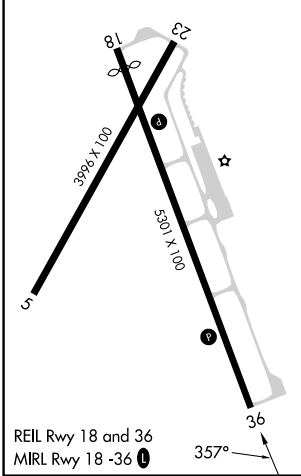
AWOS-3P 118.275	BOSTON CENTER 135.7 282.2	UNICOM 122.8 (CTAF) Ⓛ
---------------------------	-------------------------------------	--



NE-1, 16 APR 2026 to 14 MAY 2026

NE-1, 16 APR 2026 to 14 MAY 2026

ELEV 934	TDZE 934
----------	----------



CATEGORY	A	B	C	D
LPV DA	1185- $\frac{3}{4}$		251 (300- $\frac{3}{4}$)	NA
LNAV/VNAV DA	1467-1 $\frac{1}{2}$		533 (600-1 $\frac{1}{2}$)	NA
LNAV MDA	1520-1	586 (600-1)	1520-1 $\frac{3}{4}$ 586 (600-1 $\frac{3}{4}$)	NA
C CIRCLING	1520-1 586 (600-1)	1600-1 666 (700-1)	1980-3 1046 (1100-3)	NA