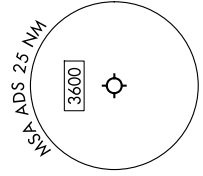
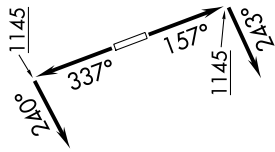


BOTCH ONE DEPARTURE (RNAV)

LONE STAR DEP CON
124.3 282.275
ATIS
133.4
CINC DEL
119.55
GND CON
121.6
ADDISON TOWER*
126.0 (CTAF) 239.0

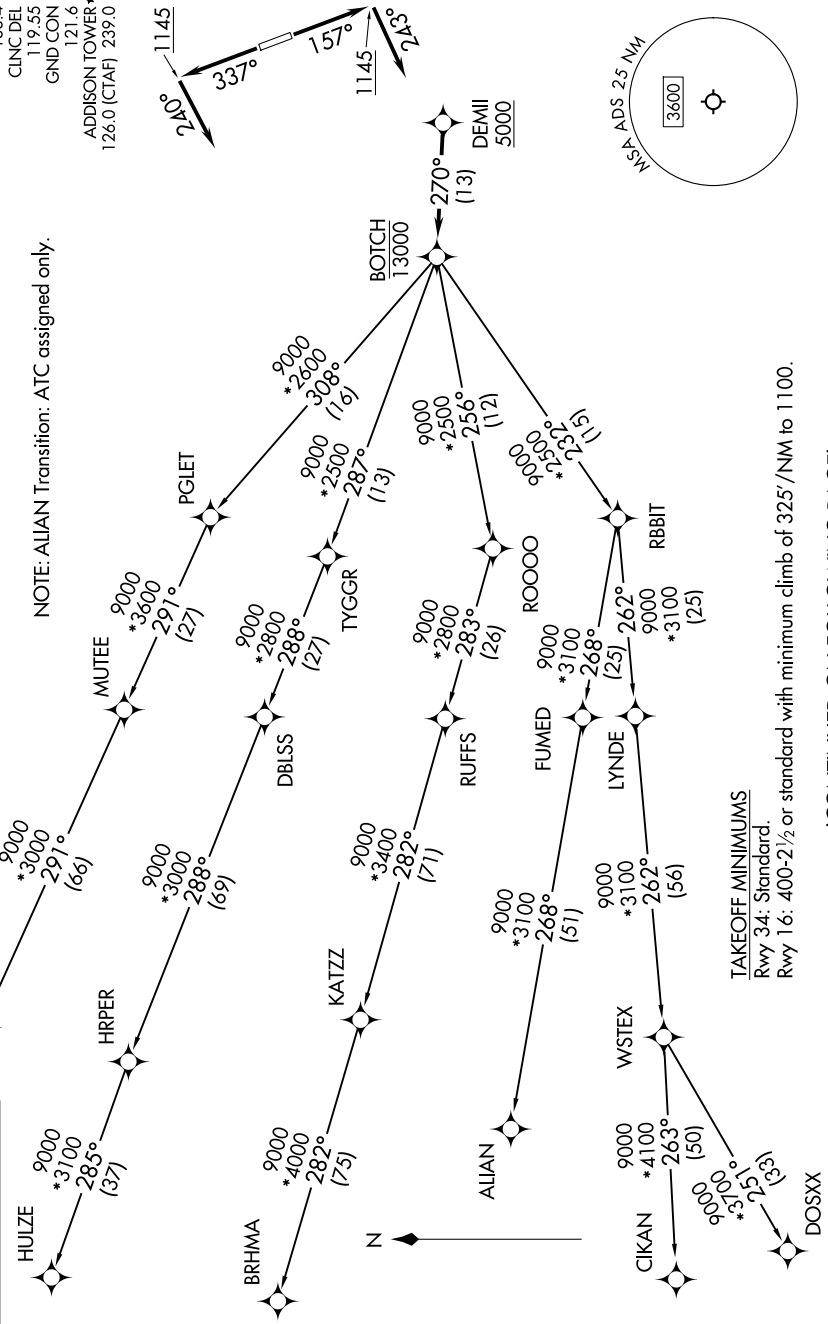


NOTE: Chart not to scale.

RNAV 1 - DME/DME/IRU or GPS required.
RADAR required for non-GPS equipped aircraft.

NOTE: ALIAN Transition: ATC assigned only.

**TOP ALTITUDE:
ASSIGNED BY ATC**



TAKEOFF MINIMUMS
Rwy 34: Standard.
Rwy 16: 400-2 1/2 or standard with minimum climb of 325'/NM to 1100.

(CONTINUED ON FOLLOWING PAGE)

BOTCH ONE DEPARTURE (RNAV)