

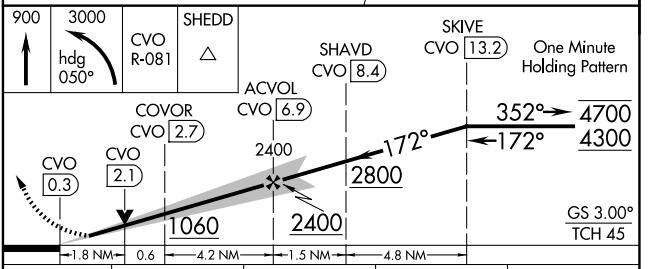
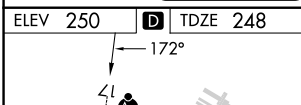
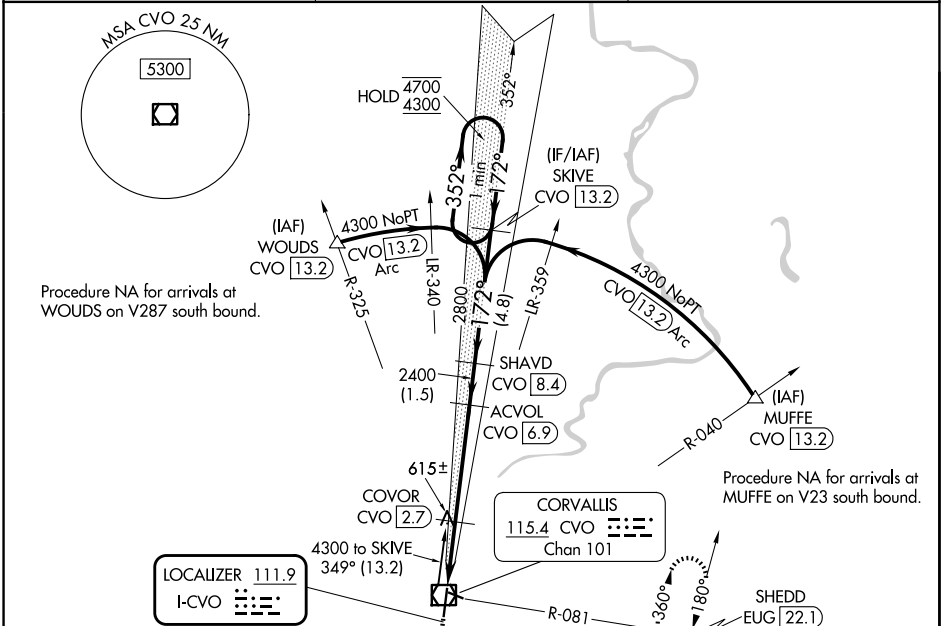
LOC I-CVO 111.9	APP CRS 172°	Rwy Ldg TDZE Apt Elev	5900 248 250
---------------------------	------------------------	-----------------------------	---

ILS or LOC RWY 17

CORVALLIS MUNI (CVO)

DME required.	MALSR	MISSED APPROACH: Climb to 900 then climbing left turn to 3000 on heading 050° and on CVO VOR/DME R-081 to SHEDD INT/EUG 22.1 DME and hold, continue climb-in-hold to 3000.
<p>⚠ Circling Rwy 28 NA at night. For inop ALS, increase S-LOC 17 Cat C/D visibility to 1¼ SM. DME from CVO VOR/DME. DME use requires simultaneous reception of I-CVO and CVO DME.</p>		

AWOS-3PT 135.775	CASCADE APP CON ★ 127.5 348.7	UNICOM 123.075 (CTAF) ①
----------------------------	---	-----------------------------------



ELEV 250	TDZE 248
REIL Rwy 35	HIRL 17-35
MIRL Rwys 10-28	FAF to MAP 6.6 NM
Knots	60 90 120 150 180
Min:Sec	6:36 4:24 3:18 2:38 2:14

CATEGORY	A	B	C	D
S-ILS 17	448-½ 200 (200-½)			
S-LOC 17	880-½ 632 (700-½)	880-1¾ 632 (700-1¾)		
CIRCLING	880-1 630 (700-1)	920-1¾ 670 (700-1¾)		1060-2½ 810 (900-2½)

NW-1, 16 APR 2026 to 14 MAY 2026

NW-1, 16 APR 2026 to 14 MAY 2026